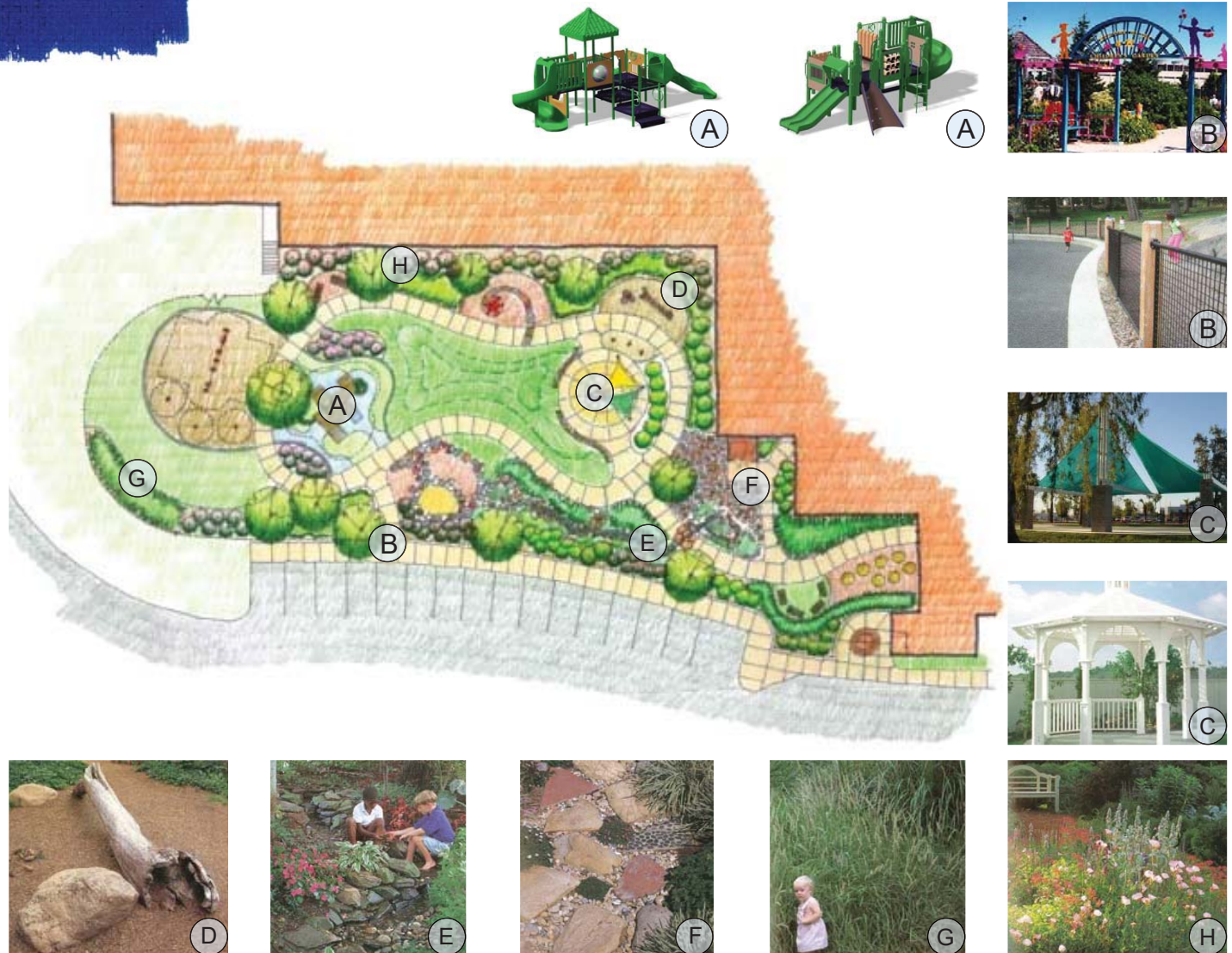


Parks and Schools

Lake Forest Community Center Kinderhaven Playground

Lake Forest, Illinois



Lake Forest Community Center Kinderhaven Playground

This play area was designed as an environment to serve many purposes in early childhood development. Secured by an ornamental fence, many activities are provided: spaces for group activities and group play, play equipment areas with sliding, climbing, balance and a space for simple motion/movement/rocking for younger children. A garden area with raised beds for growing vegetables and flowers stimulates a hands-on connection with the environment.

A "natural area" with a stream/pond/plant "Trail" provides the small child a sense of immersion into a natural place where stepping stones lead them through tall grasses. The pathway joining these spaces is designed in a "loop" so the visitor has a sense of a larger space yet is never concerned about being lost. This is especially useful for small children as well as the elderly and dementia effected seniors.

This is a place for learning and where a multigenerational family can share a visit with young children and the elderly.





Centennial Plaza

Centennial Plaza is the focus of downtown Arlington Heights and is used by commuters and shoppers alike. LDC designed its circular shape which is created by a low cut limestone wall which surrounds a brick paved plaza. A classical styled clock tower graces its center. James Gamble worked closely with Joseph Burlini, a local sculptor who was commission to design a clock tower. LDC worked with the sculptor to establish the final height of the clock and its placement in the park to provide views of the clock face from passing cars and commuters. LDC prepared construction documents for the plaza. A full scale wooden mock up clock was constructed on site for fund raising since the clock tower was paid for by donations.



North Campus "Upwells" Sculpture, University of Illinois Urbana/Champaign, Illinois



North Campus "Upwells" Sculpture, University of Illinois

The North Campus Sculpture Plaza is the core of the University of Illinois Urbana/Champaign engineering campus. The plaza forms the base for a granite, bronze and water celestial sculpture designed by sculptor Steven Leukin. A 40 foot granite spire casts shadows at the seasonal equinoxes onto bronze water domes. LDC was selected to develop the landscape design plans for the entire north campus area to work with the artist to provide technical oversight, construction details, and integrate his sculpture into the quadrangle's design. A strong bond with the artist formed during design and to show his appreciation he presented LDC with a small bronze sculpture for their office.



City Hall Campus Design and Plaza Sculpture

St. Charles, Illinois



City Hall Campus Design and Plaza Sculpture

LDC developed conceptual designs to assist the City in guiding the design of IDOT improvements to Route 64 (Main Street) as it passes through St. Charles. As part of their Urban design Plan LDC developed a park and plaza at the City Hall along the river.” the St. Charles Project received a President’s Award from the Illinois Chapter of the American Society of Landscape Architects. As part of the plan a small plaza was designed with a central focal point for a sculpture/fountain. A number of years later LDC was partnered with a local engineering firm and artist to develop final construction plans for the plaza and sculpture area.

Bluff Stairway Improvements

St. Joseph, Michigan



Bluff Stairway Improvements

The Bluff Stairway and overlook was built in early 1910 and this once important link between the lakefront and downtown had become an eyesore and under used due to a canopy attached during the 1940's and the deterioration of the concrete steps. LDC addressed this problem by removing the canopy, capping the concrete steps with new concrete modular pavers, and flaring the ends of the steps like the original stair design. Pedestrian lights were added matching those of the original steps, the stairway again has become the important downtown link to the area below the bluff and Silver Beach.





Sand Castles Plaza

The City had been asked by the donor of the “Sand Castles” sculpture to move to a more prominent location in the arboretum. LDC, James Gamble, developed a small plaza at the end of State Street where the sculpture would be seen from downtown and also be a part of the walkways in the Arboretum.

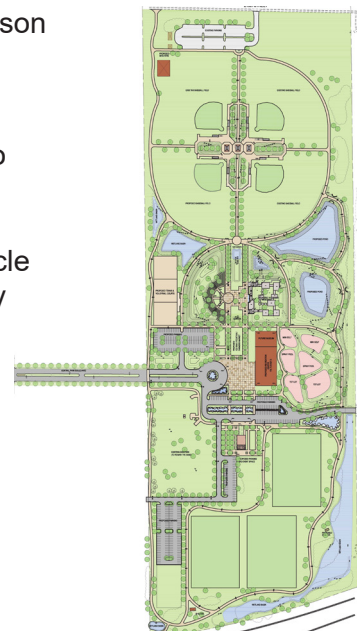


The Town of Dyer Park Board engaged Land Design Collaborative and Robinson Engineering to complete the Central Park Master Plan and implementation design.

The Central Park design is based on a strong activity core and a strong north/south axis through the center of the park giving patrons easy access from parking to activities. No one sport or activity dominates the park, appealing to a wide range of users. Its facilities include soccer, baseball, a dog park, nature walking trails, tennis, amphitheater, play area, picnic area and Veteran's Memorial. A pedestrian and bicycle pathway system provides internal circulation and a connection to a regional bikeway system.

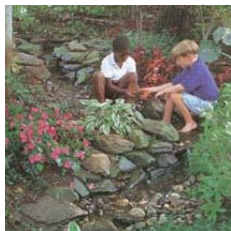
Three Park Board directives drove this community park's design:

1. Central Park is a park for everyone.
2. The Park's design is cohesive.
3. The Park is respectful of its neighbors.



Lake Forest Community Center Kinderhaven Playground

Lake Forest, Illinois



Lake Forest Community Center Kinderhaven Playground

This play area was designed as an environment to serve many purposes in early childhood development. Secured by an ornamental fence, many activities are provided: spaces for group activities and group play, play equipment areas with sliding, climbing, balance and a space for simple motion/movement/rocking for younger children. A garden area with raised beds for growing vegetables and flowers stimulates a hands-on connection with the environment.

A "natural area" with a stream/pond/plant "Trail" provides the small child a sense of immersion into a natural place where stepping stones lead them through tall grasses. The pathway joining these spaces is designed in a "loop" so the visitor has a sense of a larger space yet is never concerned about being lost. This is especially useful for small children as well as the elderly and dementia affected seniors.

This is a place for learning and where a multigenerational family can share a visit with young children and the elderly.



Five Year Plan

The Dyer Park Board felt it was in the best interest of the residents of Dyer to do the Master Plan update utilizing LDC as consultant to provide direction for prioritization of projects and to identify sources of funding from public and private sources.

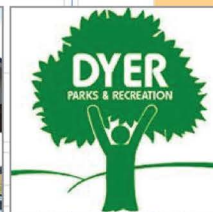
The primary goal of this plan is to enhance the Town of Dyer by providing additional recreational programs and developing current recreational programs for all ages. This plan identifies achievable goals over the next 5 years and places the Town of Dyer Parks and Recreation Department in a position where the department can grow at a continuous rate.

The three goal statements that were generated for the process were as followed:

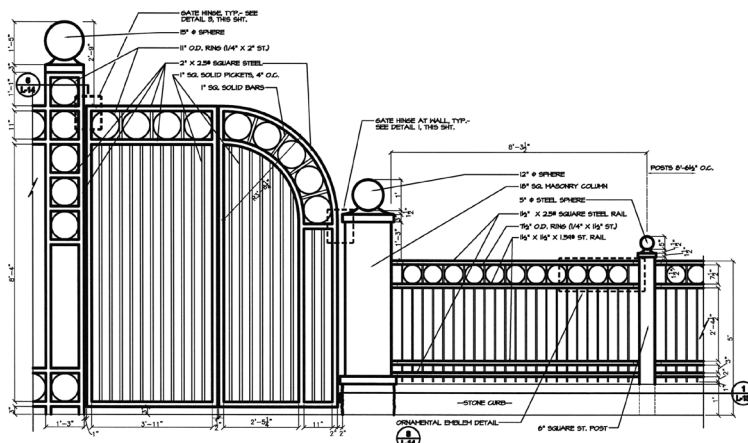
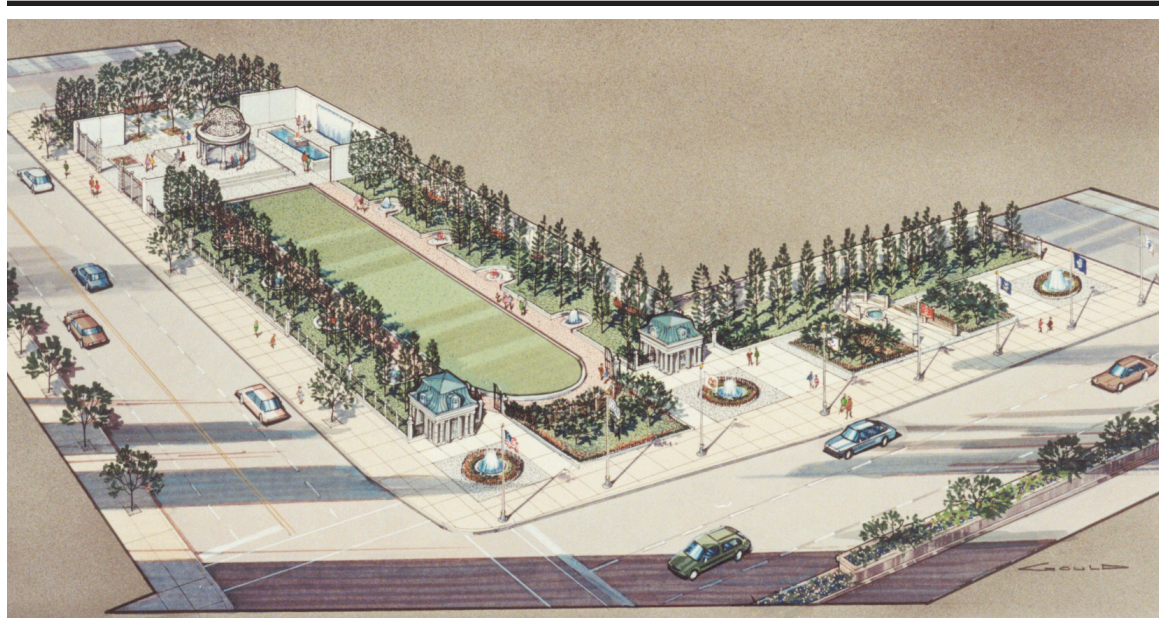
1. Develop efficient communication with surrounding community organizations to work together to better serve the Town of Dyer.
2. To enhance the overall quality of life for residents through recreation.
3. Further expand and develop recreational opportunities to provide quality experiences to attract more participants.

The Town of Dyer has grown in size and with growth comes greater expectation of recreational services and acceptable parks appearance. Within this plan, the Parks and Recreation lays out a path of how to reach each goal and be prepared for continuous growth.

Town of Dyer, Indiana Parks and Recreation Department 5 YEAR PLAN | 2017 TO 2022

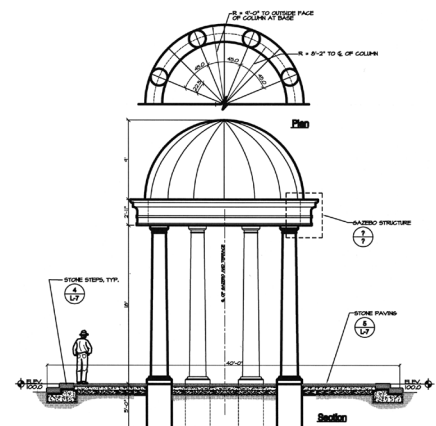


Prepared by: Land Design Collaborative, Inc.
in collaboration with
The Town of Dyer Parks and Recreation Department
November 9, 2016



5 ORNAMENTAL FENCE AND GATE DETAIL
Scale: 3/4\"/>

© Harrison St. Entrance



3 GAZEBO DETAILS
Scale: 1/4\"/>

Veterans' Memorial Park

Following a design competition, Land Design Collaborative, Inc. (LDC) was selected by the Public Building Commission of Chicago to develop the Veterans' Memorial Park at Jones School, under the Chicago School Campus Parks Program. Located on the east (State Street) portion of the block between Jones School and the Harold Washington Library, this important site was designed to provide places for quiet reflection in the gazebo, water wall, and eternal flame "white room," and a place for play on the turf of the "parade ground." Tall iron gates secured the "white room" from the street, and Twin structures, patterned after the Chicago River Bridge tenders buildings, stood as sentries at the north entry.

A double row of flowering trees surrounded the "parade ground" and special commemorative plaques were planned for the iron fences. Limestone and granite were to be used on the walks. A special steam fountain was planned as a Veteran Memorial with block granite standing behind. Water was planned throughout the park in different styles of fountains. The project was designed by LDC through construction plans but not implemented.



Eberly Park

Eberly Park is approximately 10 acres and is located on the south boundary of Dyer. This neighborhood park is adjacent to a single-family development which is in the process of being completed. After an extensive public input process, it was determined the park would be developed with baseball, soccer, natural areas, and a playground and multipurpose area with a small shelter. On-site parking is provided with a new parking lot. Pedestrian/bicycle paths ring the park and connect to off-site bike routes. The park will be developed in phases.



Hearthstone Park

Hearthstone Park is approximately 9 acres and is located in the mid-portion of Dyer. This neighborhood park is adjacent to an established single-family neighborhood with current new development completing the planned unit development. After an extensive public input process, it was determined the park would be developed with baseball, soccer, natural areas, and a playground and multipurpose area with a small shelter. On-site parking is provided with a new parking lot. Pedestrian/bicycle paths ring the park and connect to off-site bike routes. The park will be developed in phases.





Oldberg Park

At the north entry to downtown Evanston Oldberg Park is an integral link between Northwestern University campus and downtown constantly used by students who “short cut” through the park. The park’s design was revised by LDC as part of the Downtown Redevelopment Project they were leading as prime consultant. James Gamble with his wife Donna worked closely with then NU Block Gallery Museum Director David H. Mickenberg, to find an appropriate sculpture and placement in this park. As executor’s of a close friends estate they selected Debra Butterfield’s piece which she named “Duna” to symbolize the Kentucky home of their friend. LDC provided site placement and installation details to install the piece.





Evanston Lakefront Parks

The City of Evanston has over 40 acres of public parks along the lakefront of Lake Michigan. James Gamble, president of Land Design Collaborative (LDC), was the principal designer of award-winning improvements to these parks that spanned his employment with two Evanston design firms and LDC. His designs included the preparation of a reforestation plan for shade trees to replace mature elms, bike path improvements, the design of the lagoon, shelter area, and boat ramp access and parking.

Mr. Gamble also conducted an on-site user attitude and interest survey and created conceptual designs for park and beach improvements for Dempster and South Boulevard beach areas. The lagoon improvements received the Midge Perkins design award.



Lincolnwood Village Hall Promenade

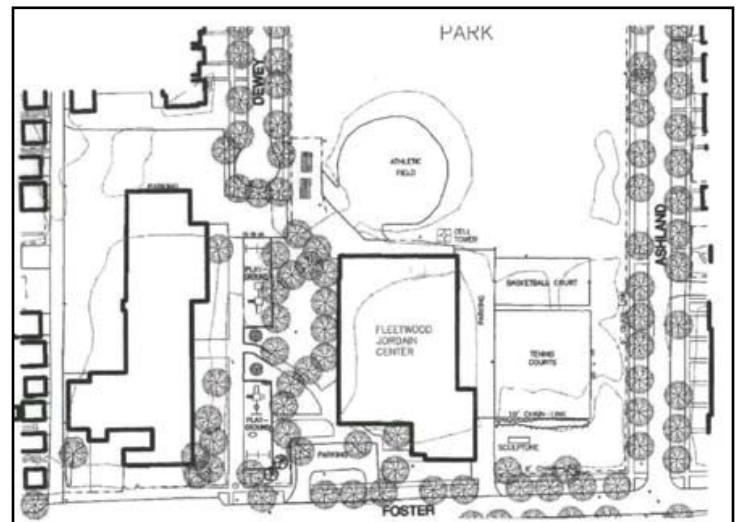
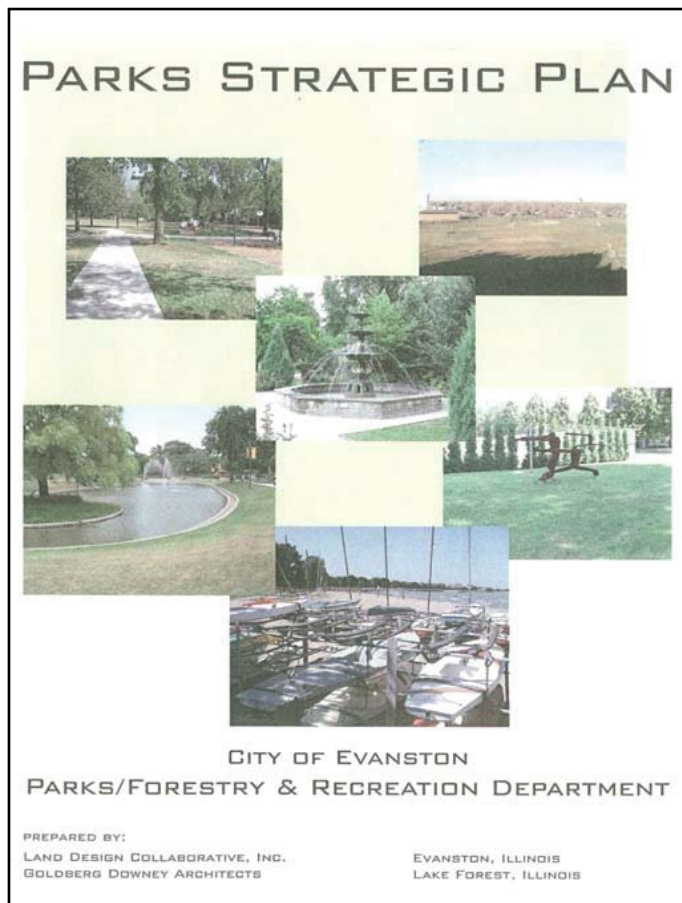
Lincolnwood, Illinois



Lincolnwood Village Hall Promenade

Before its renovation, Lincolnwood Village Hall's pedestrian entry had deteriorated sidewalks, outdated lighting, and suffering plant material. There were also safety concerns as the boundaries of the parking lot and the pedestrian walkway was often ignored, causing unsafe pedestrian and vehicular interactions. In order to correct these problems, LDC developed a landscape design plan that reflected the village's commitment to developing spaces that "promotes the health, safety, welfare and pleasure of all the residents (Lincolnwood Parks and Recreation Mission Statement).





Parks and Recreation Strategic Plan

Land Design Collaborative, Inc. (LDC) was selected by the City of Evanston to assist the Parks/Forestry and Recreation Department in developing a Strategic Master Plan.

The comprehensive plan includes:

- open space and park standards
- an inventory of resources
- a policy framework
- park improvements & recommendations
- an implementation plan

The comprehensive plan serves as a guideline for the improvement of park and recreation facilities over the next ten years. It identifies specific projects to be implemented, sets priorities and schedules, and defines expected costs.



Bluff Stairway Improvements

St. Joseph, Michigan



Bluff Stairway Improvements

The Bluff Stairway and overlook was built in early 1910 and this once important link between the lakefront and downtown had become an eyesore and under used due to a canopy attached during the 1940's and the deterioration of the concrete steps. LDC addressed this problem by removing the canopy, capping the concrete steps with new concrete modular pavers, and flaring the ends of the steps like the original stair design. Pedestrian lights were added matching those of the original steps, the stairway again has become the important downtown link to the area below the bluff and Silver Beach.





Nimbus Flight Sculpture is "counter point" to the Office District's sculpture 3 blocks east.



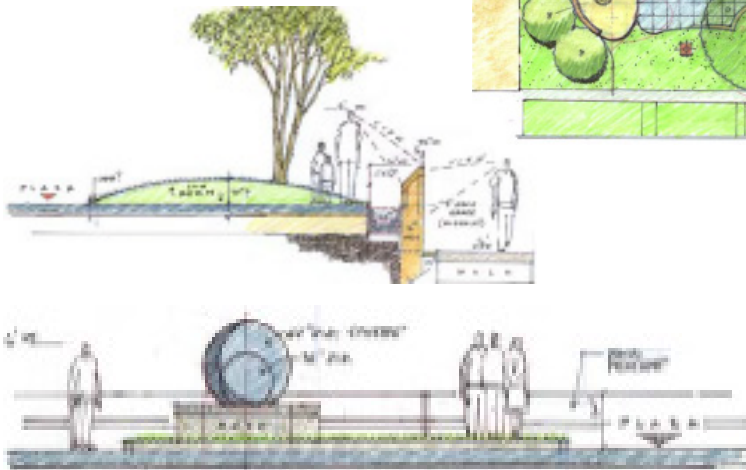
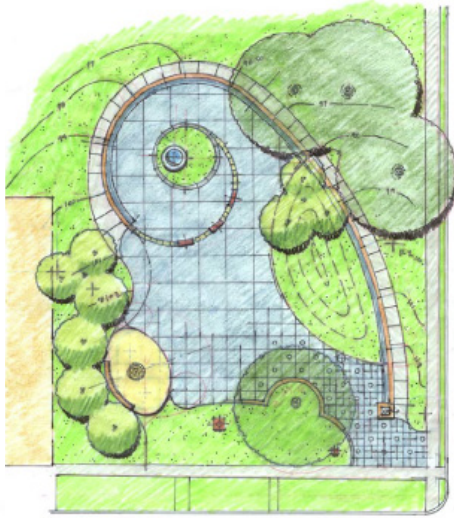
Office District Plaza with Sculpture

State Street Improvements

State Street is the main retail street in St. Joseph, attracting people, particularly tourist, to stroll the sidewalks and shop in the various stores and restaurants. In the 1970's James Gamble, then with Barton Aschman Associates from Evanston, IL worked as project designer to enhance the pedestrian areas while retaining the brick street as directed by the City. To accomplish this the sidewalk was widened, angle parking was introduced on one side so that no spaces were lost even though the walkway was widened. The wider sidewalks made more room for people and removed a small portion of the brick roadway along the curbs that had rutted. The angle parking created larger gathering spaces at Pleasant Street and Broad Street. At Pleasant Street a place was created for James Russell's sculpture "Nimbus Flight". The street lighting, walkways, and brick streets have stood the test of time and continue today after 30 years of use.

Washington Park Veterans' Memorial

Waukegan, Illinois



Washington Park Veterans' Memorial

The Washington Park Veterans' Memorial plaza functions as a gateway to downtown, while providing a memorial for all veterans of war. The design allows for various uses - dignified space to contemplate and pay tribute to the sacrifices of heroes, ceremonial congregations, or simply a place to sit.

The design utilizes the natural topography of the site (i.e., a dramatic drop in grade at the east toward the ravine) to create distinct areas of usage without conflicts. A spiral wall separates the active area of the plaza from the more solemn part. Visitors can walk along a wall inscribed with a timeline of various wars and the names of fallen heroes and leave mementos on the memory shelves along the wall. The ever-spinning spherical water feature at the inner end of the spiral signifies the renewal of life and global democracy and freedom.



Parks and Schools

Archives

Melas Park

Arlington Heights, Illinois

Client

Arlington Heights
Park District

Service Provided

program development
alternative concepts
public participation
meetings
master plan
cost estimates
implementation planning
design & construction
documents
construction administration

Design Elements

pathways
lighted softball fields
soccer fields
automated irrigation
system
bicycle path system
parking
roadway
site furniture
playground
building/restroom
sand volleyball courts
site utilities
landscape development

Construction Budget

\$1.8 million



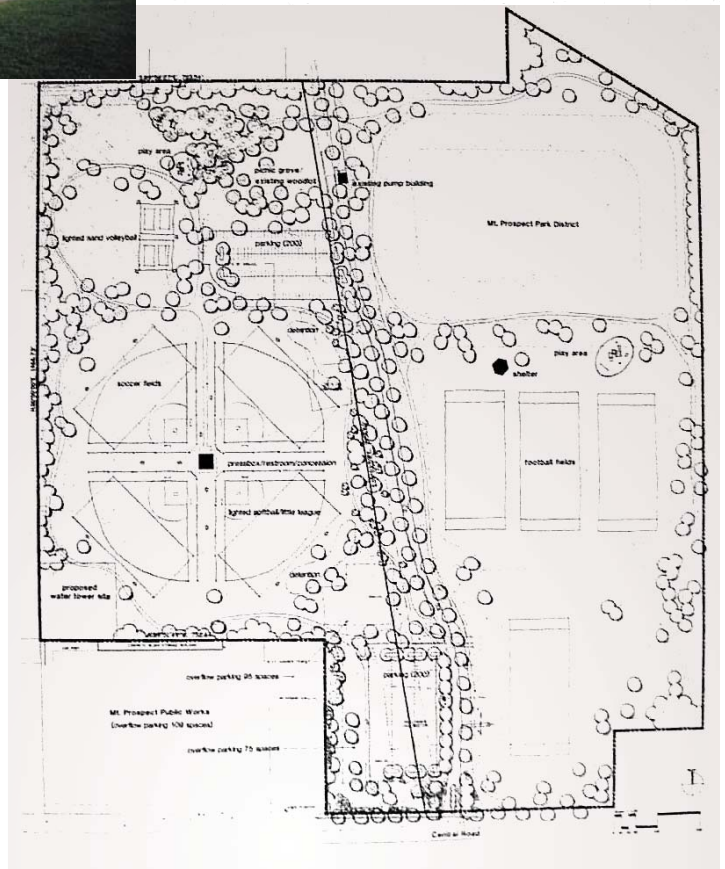
Melas Park is a 70 acre community park with half maintained/operated by the Arlington Heights Park District and half by the Mt. Prospect Park District.

The land is owned by the Metropolitan Water Reclamation District (MWRD) and is leased to the Village of Mt. Prospect, which sub-leases the land to the two park districts. MWRD maintains a 15 acre detention basin for storm water runoff storage.

LDC was contracted by the Arlington Heights Park District to plan and develop its 35 acre portion of the land. Planning had to be coordinated with the Mt. Prospect Park District and both MWRD and the Village of Mt. Prospect.

Parking and access roadways were designed for both park district sites. A lighted softball field and soccer complex with a central restroom/concession building was developed. A lighted sand volleyball court complex was provided.

The project was implemented in three phases with matching OSLAD grants for two of the phases.



Client

Arlington Heights
Park District

Service Provided

program development
alternative concepts
public participation
meetings
master plan
cost estimates
implementation planning
design & construction
documents
construction administration

Design Elements

pathways
athletic field
automated
irrigation system
bicycle path system
parking lot
9 hole par 3 golf course
site furniture
entrance roadway
site utilities
landscape development

Construction Budget

\$3.1 million

Nichol Knoll Golf Course

Arlington Heights, Illinois



Nichol Knoll Golf Course has a unique history. Formerly a landfill, the 52 acre site was the repository for material excavated off-site to create stormwater management facilities. The filling operations created a landform towering over 75 feet, and was used by football legend Walter Payton of the Chicago Bears as a training/exercise course. The fill was reused to sculpt the hills, fairways, and greens for the new nine-hole par 3 golf course.



The site, which had severe aesthetic and environmental constraints, was transformed into a valuable and attractive recreational resource for the community, as well as a revenue generating facility.

In 1998, the project received an IPRA Outstanding Facilities Award.

In honor of Walter Payton, the District has memorialized the hill in his name.



Client

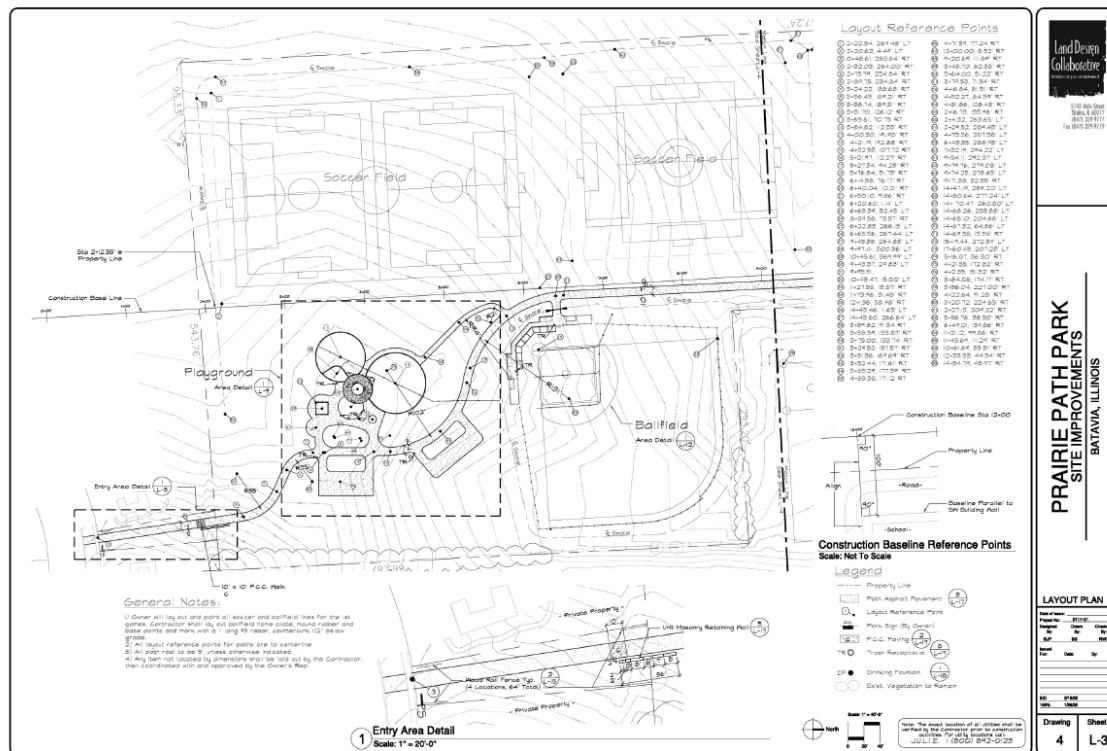
Batavia Park District
Batavia, Illinois

Service Provided

design
construction documents
construction administration

Design Elements

- ballfield
- soccer fields
- skate park
- tot playground
- school-age playground
- pathways
- landscape planting



Land Design Collaborative, Inc. (LDC) was retained by the Batavia Park District to design and develop construction documents for park site improvements and to coordinate the various public and private entities involved in the construction process.

The park provides various sports and recreation facilities to serve the needs of the surrounding neighborhood and adjacent middle school. The sport facilities include a ballfield, three soccer fields, a skate park, and tot and school-age playgrounds.

The park also has an interior path system for walking and biking and at its north end connects to the Illinois Prairie Path, a regionally significant hiking/bicycling trail.

Trees and shrubs plantings are to be phased in over a number of years. An arboretum component utilizing lowland and upland trees is planned for use in conjunction with the school's environmental education program.

Belvidere Park Master Plan

Belvidere, Illinois

Client

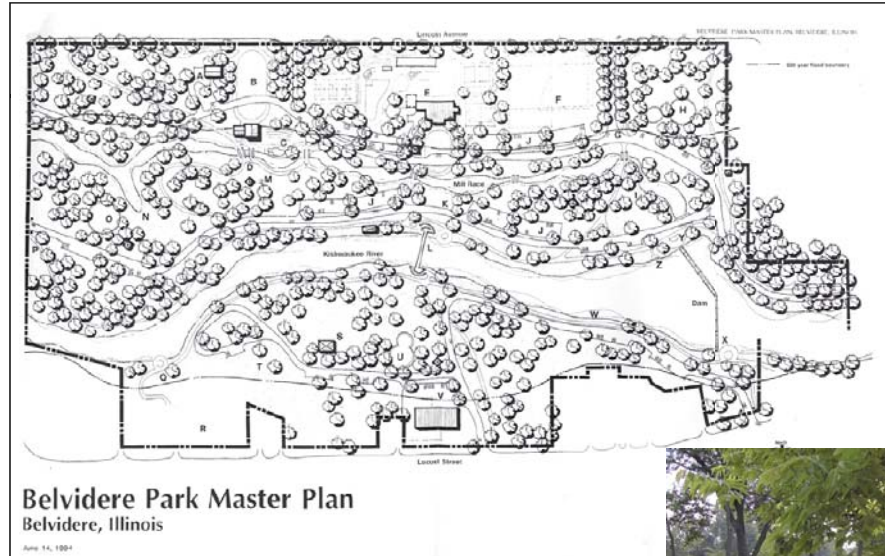
Belvidere Park District

Service Provided

project initiation and review
site investigation/
data collection/
review and analysis
public input meetings
user survey and analysis
alternative concepts
cost estimating
master plan
implementation phasing

Design Elements

landscape planting
roadways /parking
community center
maintenance building
pedestrian circulation
playground
athletic fields
swimming pool
festival/events areas
picnic facilities
shoreline treatment



Belvidere Park is the largest and most actively developed park in the Belvidere Park system. Kishwaukee River bisects this 105 acre park with existing facilities including a swimming pool, maintenance center, administrative headquarters, Old Mill House, playground, picnic area and an extensive roadway system. Land Design Collaborative, Inc. conducted a study of the park, including a site survey and analysis, user survey analysis and prepared alternative redevelopment concepts for preservation and recreation. The district adopted a master plan including plans for redevelopment of the Old Mill House and race waterway, upgrading the pool, a new playground, renovation of the roadway system, and a new community center building.



Stone Quarry Recreation Area Byron, Illinois

Client

Byron Forest Preserve District

Service Provided

conceptual site design
skate park design
cost estimate

Design Elements

skate park
miniature golf
farm theme playground
batting cages
sand volleyball
water sprayground
teen facility
parking & vehicular circulation
amphitheater with stage



LDC assisted the Byron Forest Preserve District in developing a masterplan for the Stone Quarry Recreation Park that is programmed for teens in the community. The primary features of the park include a skate park and miniature golf course, which were the first elements to be constructed and are an integral part of the teen activity programs. Other elements included in the Master Plan are a farm themed playground, batting cages, sand volleyball courts, spray water park, and an outdoor amphitheater.

Valuable insight and assistance from the skating community helped LDC design the 12,000 s.f. skate park that consists of half pipes, quarter pipes, pyramids, boxes, and grinding rails. An existing quonset hut was utilized to provide for indoor skating during inclement weather. An existing barn was renovated for group teen activities, and a new building constructed for a variety of indoor activities and events.

Cary Community Park

Cary, Illinois

Client

Cary Park District

Service Provided

program development
alternative concepts
public participation
meetings
cost estimates
master plan
implementation planning

Design Elements

pathways
softball and baseball fields
football fields
soccer fields
community center building
aquatics center
bicycle path system
roads and parking
site furniture
shelter
storm drainage
site lighting
site utilities
landscape development



The proposed development of a site for a new community park was an outgrowth of the Comprehensive Park and Facilities Plan prepared by Land Design Collaborative, Inc. for the Park District.

LDC was contracted by the District to explore the feasibility of an 80-acre site adjacent to Cary-Grove High School that would accommodate facilities for organized sports, an aquatics center and a community center.

Public participation by district residents and sports organizations was a critical factor in development of the Master Plan.

LDC assisted the District in the passage of a successful bond referendum for acquisition of the site for park development.



Comprehensive Master Plan Cary, Illinois

Client

Cary Park District

Service Provided

park site and
facilities inventory

park analysis

demographic evaluation

administration &
management assessment

recreation program
assessment

park acquisition
recommendations

bike trail system

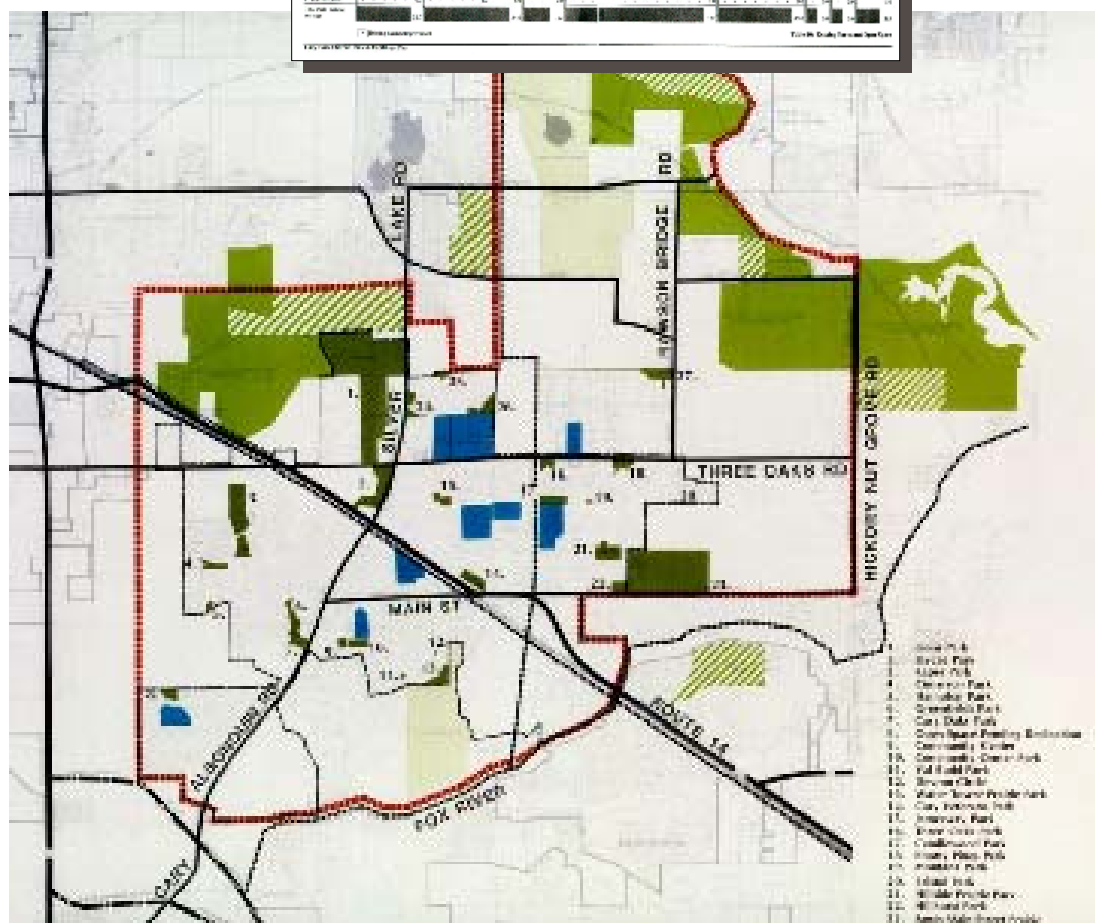
implementation
recommendations

PARK and FACILITIES PLAN

for
CARY PARK DISTRICT
Cary, Illinois

prepared by:
Land Design Collaborative, Inc.
Evanston, Illinois
Donald Wirth, Recreation Specialist

APPENDIX C Inventory of Facilities									
Facility	Location	Size	Age	Condition	Notes	Facility	Location	Size	Age
Baseball Field	1. Silver Lake	1.00	1980	Good		Baseball Field	2. Silver Lake	1.00	1980
Baseball Field	3. Silver Lake	1.00	1980	Good		Baseball Field	4. Silver Lake	1.00	1980
Baseball Field	5. Silver Lake	1.00	1980	Good		Baseball Field	6. Silver Lake	1.00	1980
Baseball Field	7. Silver Lake	1.00	1980	Good		Baseball Field	8. Silver Lake	1.00	1980
Baseball Field	9. Silver Lake	1.00	1980	Good		Baseball Field	10. Silver Lake	1.00	1980
Baseball Field	11. Silver Lake	1.00	1980	Good		Baseball Field	12. Silver Lake	1.00	1980
Baseball Field	13. Silver Lake	1.00	1980	Good		Baseball Field	14. Silver Lake	1.00	1980
Baseball Field	15. Silver Lake	1.00	1980	Good		Baseball Field	16. Silver Lake	1.00	1980
Baseball Field	17. Silver Lake	1.00	1980	Good		Baseball Field	18. Silver Lake	1.00	1980
Baseball Field	19. Silver Lake	1.00	1980	Good		Baseball Field	20. Silver Lake	1.00	1980
Baseball Field	21. Silver Lake	1.00	1980	Good		Baseball Field	22. Silver Lake	1.00	1980
Baseball Field	23. Silver Lake	1.00	1980	Good		Baseball Field	24. Silver Lake	1.00	1980
Baseball Field	25. Silver Lake	1.00	1980	Good		Baseball Field	26. Silver Lake	1.00	1980
Baseball Field	27. Silver Lake	1.00	1980	Good		Baseball Field	28. Silver Lake	1.00	1980
Baseball Field	29. Silver Lake	1.00	1980	Good		Baseball Field	30. Silver Lake	1.00	1980
Baseball Field	31. Silver Lake	1.00	1980	Good		Baseball Field	32. Silver Lake	1.00	1980
Baseball Field	33. Silver Lake	1.00	1980	Good		Baseball Field	34. Silver Lake	1.00	1980
Baseball Field	35. Silver Lake	1.00	1980	Good		Baseball Field	36. Silver Lake	1.00	1980
Baseball Field	37. Silver Lake	1.00	1980	Good		Baseball Field	38. Silver Lake	1.00	1980
Baseball Field	39. Silver Lake	1.00	1980	Good		Baseball Field	40. Silver Lake	1.00	1980
Baseball Field	41. Silver Lake	1.00	1980	Good		Baseball Field	42. Silver Lake	1.00	1980
Baseball Field	43. Silver Lake	1.00	1980	Good		Baseball Field	44. Silver Lake	1.00	1980
Baseball Field	45. Silver Lake	1.00	1980	Good		Baseball Field	46. Silver Lake	1.00	1980
Baseball Field	47. Silver Lake	1.00	1980	Good		Baseball Field	48. Silver Lake	1.00	1980
Baseball Field	49. Silver Lake	1.00	1980	Good		Baseball Field	50. Silver Lake	1.00	1980
Baseball Field	51. Silver Lake	1.00	1980	Good		Baseball Field	52. Silver Lake	1.00	1980
Baseball Field	53. Silver Lake	1.00	1980	Good		Baseball Field	54. Silver Lake	1.00	1980
Baseball Field	55. Silver Lake	1.00	1980	Good		Baseball Field	56. Silver Lake	1.00	1980
Baseball Field	57. Silver Lake	1.00	1980	Good		Baseball Field	58. Silver Lake	1.00	1980
Baseball Field	59. Silver Lake	1.00	1980	Good		Baseball Field	60. Silver Lake	1.00	1980
Baseball Field	61. Silver Lake	1.00	1980	Good		Baseball Field	62. Silver Lake	1.00	1980
Baseball Field	63. Silver Lake	1.00	1980	Good		Baseball Field	64. Silver Lake	1.00	1980
Baseball Field	65. Silver Lake	1.00	1980	Good		Baseball Field	66. Silver Lake	1.00	1980
Baseball Field	67. Silver Lake	1.00	1980	Good		Baseball Field	68. Silver Lake	1.00	1980
Baseball Field	69. Silver Lake	1.00	1980	Good		Baseball Field	70. Silver Lake	1.00	1980
Baseball Field	71. Silver Lake	1.00	1980	Good		Baseball Field	72. Silver Lake	1.00	1980
Baseball Field	73. Silver Lake	1.00	1980	Good		Baseball Field	74. Silver Lake	1.00	1980
Baseball Field	75. Silver Lake	1.00	1980	Good		Baseball Field	76. Silver Lake	1.00	1980
Baseball Field	77. Silver Lake	1.00	1980	Good		Baseball Field	78. Silver Lake	1.00	1980
Baseball Field	79. Silver Lake	1.00	1980	Good		Baseball Field	80. Silver Lake	1.00	1980
Baseball Field	81. Silver Lake	1.00	1980	Good		Baseball Field	82. Silver Lake	1.00	1980
Baseball Field	83. Silver Lake	1.00	1980	Good		Baseball Field	84. Silver Lake	1.00	1980
Baseball Field	85. Silver Lake	1.00	1980	Good		Baseball Field	86. Silver Lake	1.00	1980
Baseball Field	87. Silver Lake	1.00	1980	Good		Baseball Field	88. Silver Lake	1.00	1980
Baseball Field	89. Silver Lake	1.00	1980	Good		Baseball Field	90. Silver Lake	1.00	1980
Baseball Field	91. Silver Lake	1.00	1980	Good		Baseball Field	92. Silver Lake	1.00	1980
Baseball Field	93. Silver Lake	1.00	1980	Good		Baseball Field	94. Silver Lake	1.00	1980
Baseball Field	95. Silver Lake	1.00	1980	Good		Baseball Field	96. Silver Lake	1.00	1980
Baseball Field	97. Silver Lake	1.00	1980	Good		Baseball Field	98. Silver Lake	1.00	1980
Baseball Field	99. Silver Lake	1.00	1980	Good		Baseball Field	100. Silver Lake	1.00	1980





Client

Cary Park District

Service Provided

alternative concepts

master plan

cost estimate

OSLAD grant assistance

construction design
documents

construction administration
services

Design Elements

pathways

bicycle path system

parking

native prairie plantings

site furniture

pedestrian bridges

shelter/restroom

site utilities

landscape development

fishing pier

Jaycee Park

Cary, Illinois

Jaycee Park was an existing 8 acre park with a 3 acre pond. The park was under-utilized and the pond was in a deteriorating condition. LDC analyzed the potential use of the park and its location in linking with other parks and a new bike trail system.

The pond was developed for fishing and ice skating with parking and a restroom/shelter provided to accommodate user needs. A path/bikeway was developed through the park linking activity areas and connecting with a community bike trail.

Renovation of the existing pond included wetland plantings to stabilize and improve appearance of the shoreline, and improve the water quality and fish habitat. Bioswales and settling basins were developed at inlets to the pond to reduce contaminants. Landscape plantings were installed throughout the park to provide buffer areas and reduce maintenance.

The project received an OSLAD grant and also awarded an outstanding site development award from the U.S. Soil Conservation Service.





Robert C. Porter Family Park

Champaign, Illinois

Client

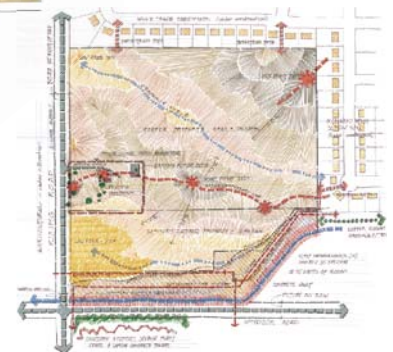
Champaign Park District
Champaign, Illinois

Service Provided

site evaluation
program development
alternative concepts
public consensus process
master plan
cost estimating and phasing
OSLAD Grant assistance

Design Elements

pathways
bicycle trail
parking
picnic area
Interpretive signage
wetlands
pond
prairie and woodland plantings
site amenities



With an OSLAD grant from Illinois Department of Natural Resources and land donations from the Porter Family and the Champaign-Urbana Sanitary District, the Champaign Park District was able to acquire 38 acres on the rapidly developing fringe area of southwest Champaign. The site is flat and open with the Copper Slough Drainage Channel at the southern boundary, with sanitary mains to the Sanitary District Plant located directly south.

As a result of a recently conducted district wide attitude and interest survey, and a series of public meetings, it was determined that the park would be developed primarily for passive use. Based on a number of alternative concepts, the park will be developed as a natural area representing on a small scale the "Illinois landscape" including wetlands, lowland prairie, upland prairie, savannah, and woodlands. A three acre pond will be constructed to serve as

flood-retention along the Copper Slough as well as providing natural habitats. A shelter and future nature center are planned overlooking the pond with an open space amphitheater for special events and unstructured recreational use. A two mile bike/pedestrian trail system throughout the park and connecting to a community wide trail will be developed with interpretive signage provided. The project was awarded an OSLAD Grant for development of the first phase.



12th Street Beach/Northerly Island

Chicago, Illinois

Client

Chicago Park District

Service Provided

project initiation and review
site investigation/
data collection/
review and analysis
design development
construction
documentation
cost estimating
bidding and negotiations
construction administration

Design Elements

landscape plantings
paving
lighting



The landscape design for the 12th Street Beach project at Northerly Island complements beach activities and supports the natural habitat, while preserving the magnificent views to the City. In addition to being an important part of the Lakefront Park system, the park is also an important component of the Museum Campus and Solidarity Drive.

The design provides for a pedestrian plaza, sidewalks, lighting, floral display garden, shade/ornamental trees, and evergreen and deciduous shrubs. At the west side of the site, a double formal row of trees serves

to buffer the parking area from the beach-front. Other double rows of trees flank the interior walkways. The spaces between the trees open onto lawn areas punctuated with ornamental trees and other plantings. Perennial gardens highlight the new entry walks from the parking lot to the beach and the beach house.

Located between Adler Planetarium and Meigs Field, this project serves as an important link between these two Chicago landmarks. The design also takes into account future park development at Meigs Field.

Cleveland Elementary School Campus Park

Chicago, Illinois

Client

Public Building
Commission
Chicago, Illinois

Service Provided

site design
construction documents
construction administration

Design Elements

playground
parking lot
planting
lawn



Land Design Collaborative, Inc. (LDC) was retained by the Public Building Commission to design and develop construction documents for the site improvements of Cleveland Elementary School campus park, as well as to coordinate with various entities involved in the construction process.

The new campus park provides improved parking, playground, pedestrian circulations, plaza, and plantings.



Gray School Campus Park Chicago, Illinois

Client

Public Building
Commission
of Chicago

Service Provided

schematic design
design development
construction design
cost estimates
construction administration

Design Elements

walkways
site lighting
playgrounds
gardens
site furniture
fencing
landscape development

Construction Budget

\$0.6 million



As part of a major effort by the City of Chicago to improve its public schools, Land Design Collaborative, Inc. was contracted by the Public Building Commission of Chicago to prepare design and construction documents for the renovation of nine school sites.

Gray Elementary School, located on the north side of the City, recently added a new school building. A vacant, paved area between the existing and new buildings was redeveloped with new play and recreational facilities. New playground facilities were designed with walkways, lawn areas, fencing, an irrigation system and site furniture.



Gray School Campus Park Chicagoo, Illinois

Client

Public Building
Commission
of Chicago

Service Provided

schematic design
design development
construction design
cost estimates
construction administration

Design Elements

walkways
site lighting
playgrounds
gardens
site furniture
fencing
landscape development

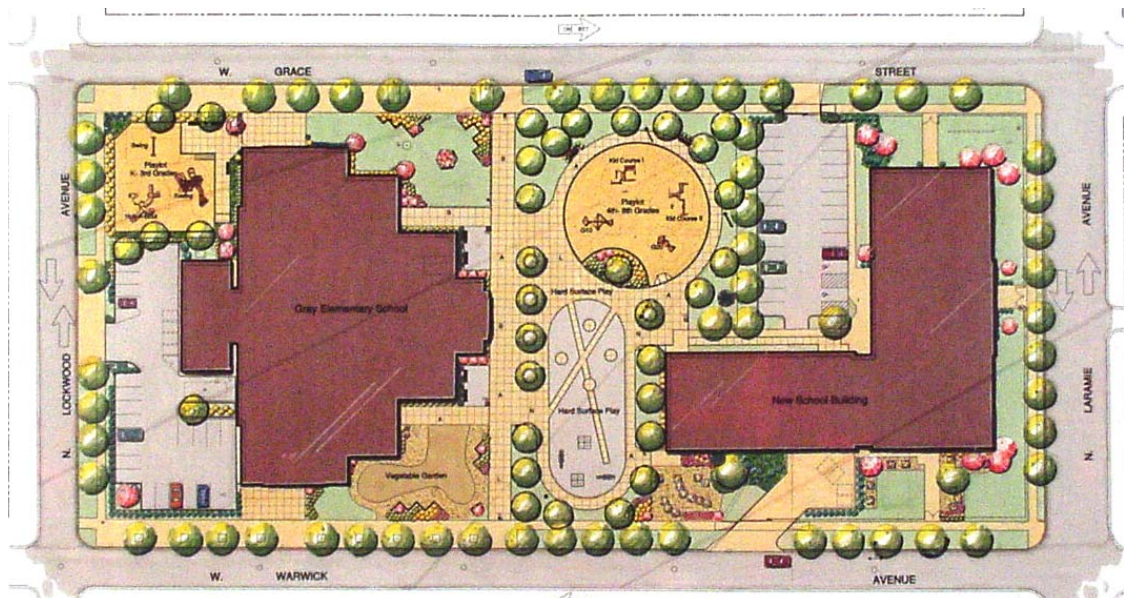
Construction Budget

\$0.6 million



As part of a major effort by the City of Chicago to improve its public schools, Land Design Collaborative, Inc. was contracted by the Public Building Commission of Chicago to prepare design and construction documents for the renovation of nine school sites.

Gray Elementary School, located on the north side of the City, recently added a new school building. A vacant, paved area between the existing and new buildings was redeveloped with new play and recreational facilities. New playground facilities were designed with walkways, lawn areas, fencing, an irrigation system and site furniture.



La Rabida Children's Hospital Play Environment

Chicago, Illinois

Client

La Rabida
Children's Hospital &
Research Center

Service Provided

program development
site analysis
alternative concepts
master plan
cost estimates
design development
construction design
construction
administration

Design Elements

landscape development
special playground
equipment
fountain
special paving systems
site furniture
site lighting
site utilities
fencing

Construction Budget

\$500,000



La Rabida Hospital is situated in Chicago's historic Jackson Park, on the former site of the 1893 Colombian Exposition's Spanish Pavilion.

In collaboration with the Hospital and building architect, LDC developed site planning concepts for integrating a therapeutic play environment, where children relying on ventilators, mobility equipment or alarm systems could be outdoors and play. The site improvements provide outdoor rehabilitation, recreation and passive spaces for patients, family and hospital staff.

Overall development of the play environment required special integration of lighting, walkways and plantings with the Chicago Park District's plans for recreational use development of the lakefront.

La Rabida Playground received a President's Award from the Illinois Chapter American Society of Landscape Architects.



Client

Chicago Park District

Service Provided

program development

site analysis

alternative concepts

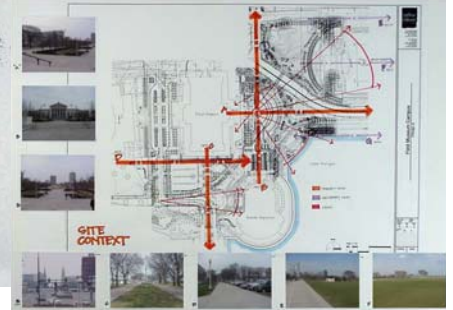
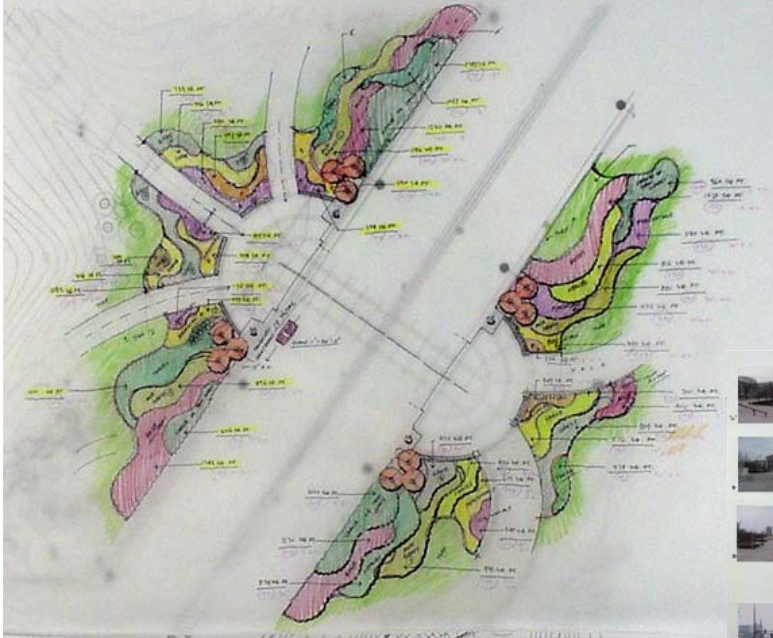
master plan

implementation planning

Design Elements

planting design

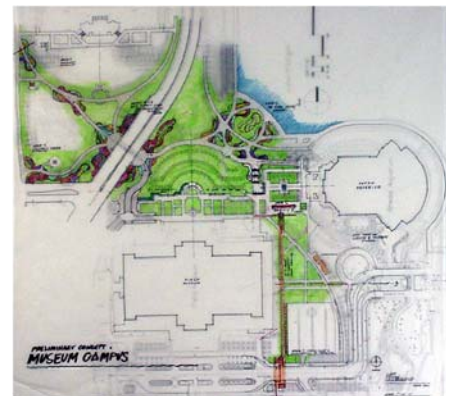
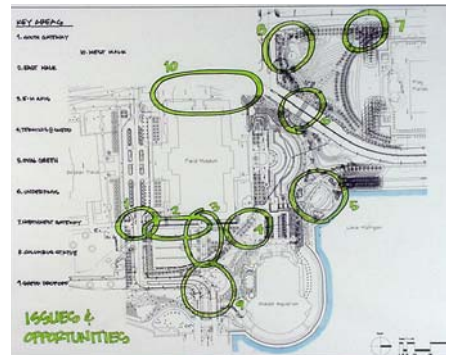
landscape development



The Museum Campus project established goals to organize its landscape character, improve views and the sequence of spaces, and orient the landscape to pedestrian level. Creating a “way finding” system of ornamental plantings was also a key objective, both to enhance the movement of pedestrians and their enjoyment of the walkway system.

Key areas throughout the Museum Campus were studied. These areas included: the south gateway from the parking lot at Soldier Field leading to the Museum Campus, the walks along the east and west sides of the Field Museum, the east-west axis at the western terminus of Solidarity Way, the terminus at the Shedd Aquarium, the oval green at the southwest corner of Monroe Harbor, the pedestrian underpass at Lake Shore Drive, the northwest gateway at Columbus Avenue and the Columbus statue area at Columbus Drive.

The Museum Campus landscape planting plan was based on plant suitability, availability and appearance. Plant selections met Chicago Park District and City established criteria while establishing an ornamental planting signature for the Museum Campus pedestrian way.



Client

Chicago Park District

Service Provided

program development

site analysis

alternative concepts

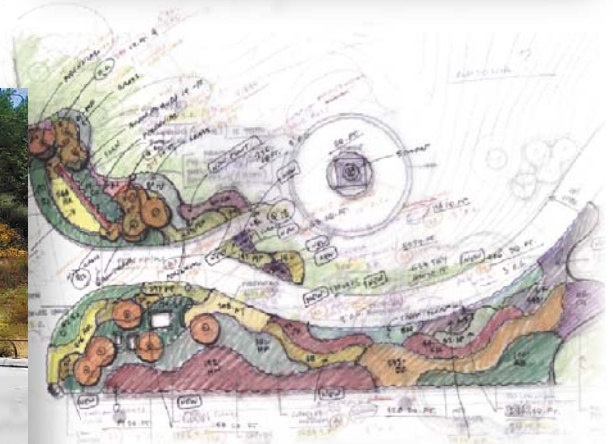
master plan

implementation planning

Design Elements

planting design

landscape development



The Museum Campus project established goals to organize its landscape character, improve views and the sequence of spaces, and orient the landscape to pedestrian level. Creating a way finding system of ornamental plantings was also a key objective, both to enhance the movement of pedestrians and their enjoyment of the walkway system.

Key areas throughout the Museum Campus were studied. These areas included: the south gateway from the parking lot at Soldier Field leading to the Museum Campus, the walks along the east and west sides of the Field Museum, the east-west

axis at the western terminus of Solidarity Way, the terminus at the Shedd Aquarium, the oval green at the southwest corner of Monroe Harbor, the pedestrian underpass at Lake Shore Drive, the northwest gateway at Columbus Avenue and the Columbus statue area at Columbus Drive.

The Museum Campus landscape planting plan was based on plant suitability, availability and appearance. Plant selections met Chicago Park District and City established criteria while establishing an ornamental planting signature for the Museum Campus pedestrian way.



Wadsworth School Campus Park

Chicago, Illinois

Client

Public Building
Commission of Chicago
Chicago, Illinois

Service Provided

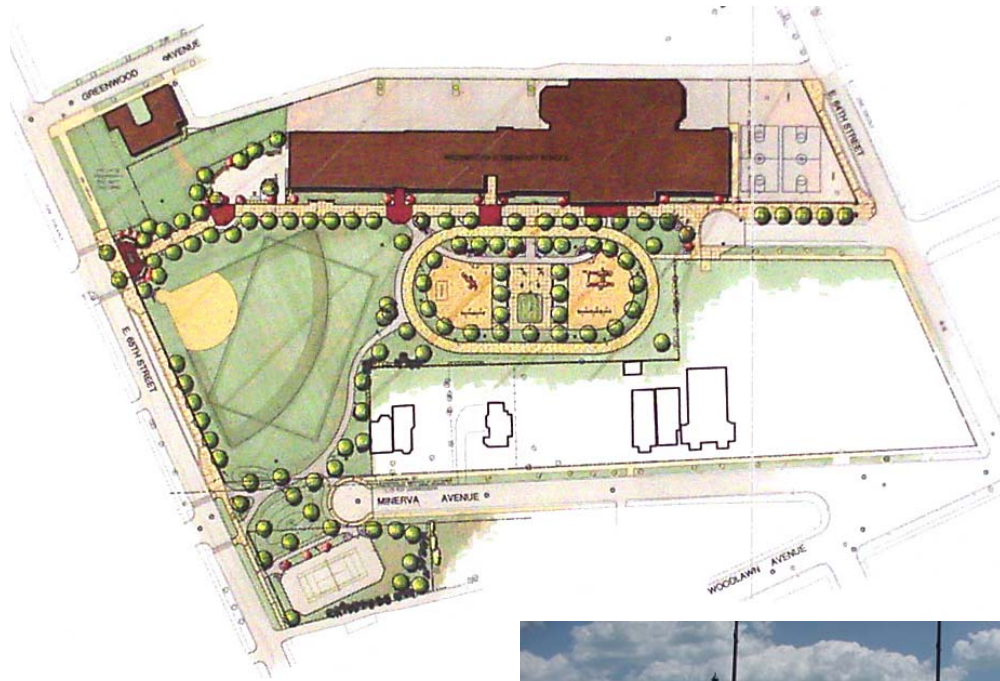
schematic design
design development
construction design
cost estimates
construction administration

Design Elements

walkways
site lighting
playgrounds
site furniture
fencing
parking lot
gardens
tennis court
softball field
basketball courts
automated irrigation
system
landscape development

Construction Budget

\$1.3 million



As part of a major effort by the City of Chicago to improve its public schools, Land Design Collaborative, Inc. was contracted by the Public Building Commission of Chicago to prepare design and construction documents for the renovation of nine school sites.

Wadsworth Elementary School, located on the south side of City, acquired additional land east of the existing school building and reclaimed, for pedestrian use, the existing street in front of the building. With the additional land, new site improvements were developed, which consisted of playground facilities, walkways, lawn areas, athletic fields, fencing and site furniture.





Walsh School Campus Park

Chicago, Illinois

As part of a major effort by the City of Chicago to improve its public schools, Land Design Collaborative, Inc. was contracted by the Public Building Commission of Chicago to prepare design and construction documents for the renovation of nine school sites.



Walsh Elementary School, located on the south side of the city, recently added a new school building. Land was acquired south of the building for the development of play and recreational facilities. New playground facilities were designed with walkways, lawn areas, landscape, fencing, gardens and site furniture. Parking was added with a new service area provided.



Client

Public Building
Commission of Chicago
Chicago, Illinois

Service Provided

schematic design
design development
construction design
cost estimates
construction administration

Design Elements

walkways
site lighting
playground
site furniture
fencing
landscape development

Construction Budget

\$0.6 million



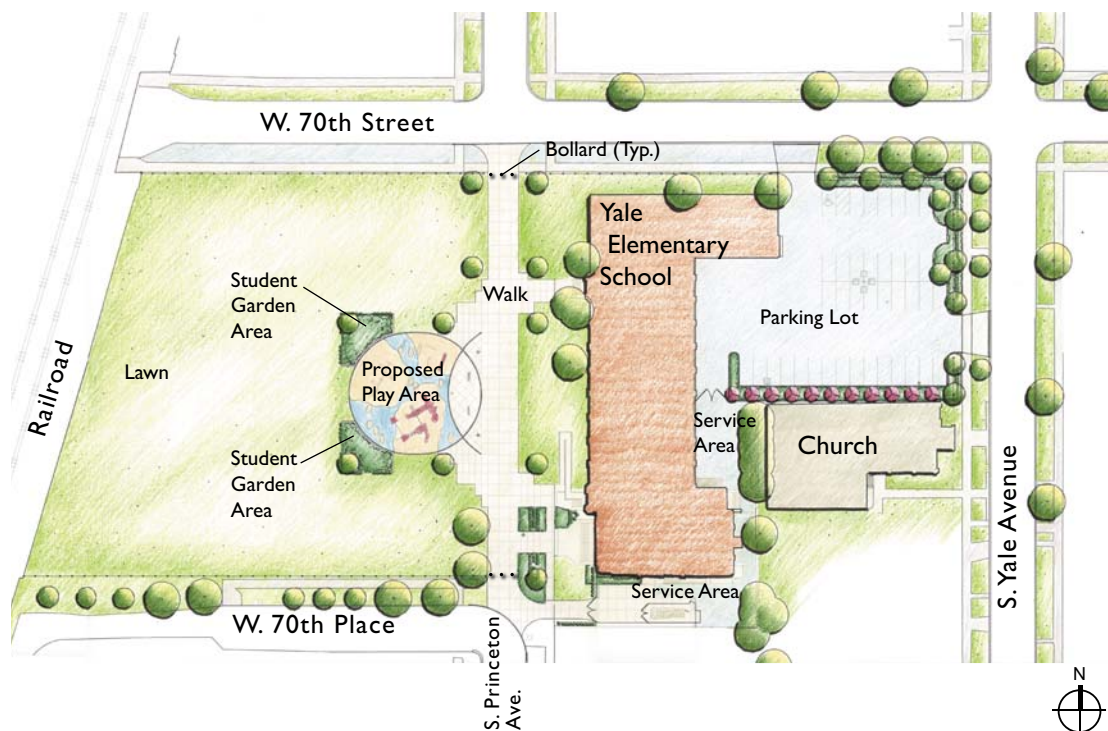
Yale School Campus Park

Chicago, Illinois

Client
Public Building
Commission of Chicago
Chicago, Illinois

Service Provided
site design
construction documents
construction administration

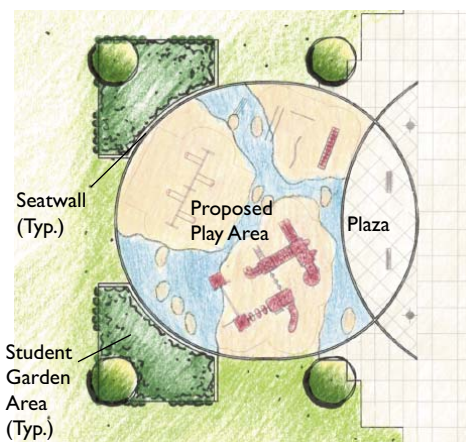
Design Elements
playground
pathways
parking
fencing
irrigation
lighting



LDC was retained by the City of Chicago's Public Building Commission to produce construction documents, make appropriate design adjustments and coordinate with the various public and private bodies involved in construction of the project. The project re-claimed the existing north-south street between W. 70th Street and W. 70th Place and the west lawn area for a playfield and multi-purpose pedestrian use. Expansion of the school site allowed the creation of improved parking facilities on the east side of the building.

The new plaza creatively utilizes sidewalk paving joints to create pattern and define the seating area between the playground and school. Additionally, the use of different colors of playground rubber surfacing creates an extra opportunity for play. The blue and beige colors are used to denote the sea and a series of islands. Seatwalls sep-

arate the play area from the student garden areas abutting it. Other improvements include new plantings, a drinking fountain and ornamental pathway lighting.





Willoughby Farm and Conservation Area

Collinsville, Illinois

Client

Collinsville Area
Recreation District
Collinsville, Illinois

Service Provided

public process
master plan
alternative concepts
program development
consensus building

Design Elements

interpretive center
conservation area
historic farm preservation
gardens
croplands
parking



4. What is the greatest challenge to the utilization of the farm and conservation area?

Answers

Money

long term maintenance and operation
where is the funding stream
free or paying fee

Votes

12

Deciding how to develop and use
sticking to master plan
flexibility in master plan
trying to be all things to all people

Community support

advertising
sustained excitement during development and ongoing
keeping positive relations with neighbors

Wildlife management

preserving wildlife during development
conflict between human users and wildlife users
bring back wildlife that isn't there now – restore the native wildlife

Runoff and erosion that damage the ravines

impact of surrounding area on preservation area
do not over develop the preservation area
development of infrastructure
develop primitive camping area
no fires

Accessibility

terrain of land
parking

Security

Making it safe with proper restoration



■ Money ■ Deciding how to use ■ Community Support
■ Wildlife Management ■ Runoff & erosion

Farm Images

Willoughby Farm & Conservation Area

Collinsville Area Recreation District



Willoughby Farm has been a community fixture in the Collinsville area since the early 1900's. Recognizing the significance of the interactive educational value and to preserve what may be the last significant tract of open space along the Collinsville bluff line, the Collinsville Area Recreation District purchased the forty acres of land from the Trust for Public Land with an IDNR Conservation 2000 Grant.

A consensus building process was established to provide interactive discussion with the general public, as well as within the Steering Committee and the three Sub-Committees. Through the public process, the Steering Committee was able to refine the Willoughby Farm vision, thus defining the program requirements and the issues to be considered in the planning of the Willoughby Farm and Conservation Area.

Land Design Collaborative (LDC) and its team of consultants were selected by the Park District to work with the Steering Committee as well as the numerous planning partners to facilitate the development of a Master Plan. The constraints of the site were clearly evident by the condition of the farm and the nature of the conservation easement.





Briarwood Trail/Tree Park Nature Preserve Master Plan

Deerfield, Illinois

Client

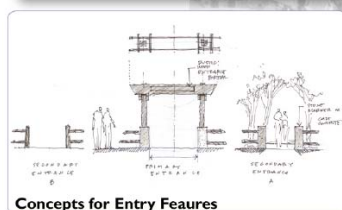
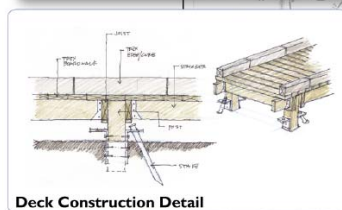
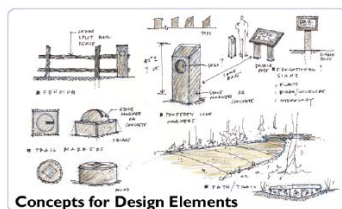
Deerfield Park District
Deerfield, Illinois

Service Provided

site inventory
master planning
management planning
funding sources analysis
implementation
planning

Design Elements

habitat restoration
woodland
management
river channel
restoration
interpretive features
low-impact trails
BMP parking



LDC was commissioned to create a master plan for an approximately 15-acre under-utilized wooded area of Briarwood Park and Trail Tree Park, located in the flood plain of the Middle Fork of the North Branch of the Chicago River. The aim of the project was to produce clear goals for developing the site as a Park District resource for conservation, education and passive uses.

With input from Park District staff, LDC reviewed previous scientific studies of the ecology of the site; carried out an inventory of existing conditions; identified issues; examined possible improvements, and compiled alternate design approaches. This process resulted in the production of a finalized master plan, natural resource management proposals and a detailed multi-stage budget and implementation plan.

Features of the final plan include proposals to enhance and restore existing habitat types—including savanna woodland, oak/ash/hickory woodland, climax mesic woodland and wet/mesic riparian woodland—using a series of management and design techniques; to restore existing river banks and floodplain to a more natural condition with wetland areas; to improve access within the park and linkage to surrounding areas, develop interpretation and wildlife observation facilities; to provide access and interpretation for the Trail Tree, a significant historical feature; and provide parking using best management practice storm water design; and to clearly delineate site boundaries.

Client

Deerfield Park District

Service Provided

playground design

construction documents

bidding

construction administration

Design Elements

shelter building

pathways

play area

picnic areas

activity areas

parking lot

landscaping



Jewett Park is approximately 20 acres in size and is located in the heart of downtown Deerfield. The site is adjacent to Village Hall, the Library, Commuter Train Station and the Park District Headquarters and Community Center. The Park has lighted baseball, soccer, skateboarding, winter outdoor hockey and skating rinks and tot lot facilities. The park also has landmark quality stands of oak trees.

It became the responsibility of Land Design Collaborative, Inc., to develop a long range Master Plan for this important park and implement construction of an immediate action project. The park was updated with a new shelter building which replaced the closed senior center, a new play area, picnic and activity areas, a new skating rink, vehicle entry and parking lot. This approximately \$1.5 million dollar refurbished park has become a favorite place for community events and neighborhood families. The Fourth of July brings thousands of visitors to dine, enter their dogs in the dog show, visit vendor booths and meet and greet folks and have fun.

Prairie Lakes Park

Des Plaines, Illinois

Client

Des Plaines Park District

Service Provided

program development
alternative concepts
public participation
meetings
cost estimates
master plan
implementation planning
design & construction
documents
construction administration

Design Elements

item
pathways
athletic fields
bicycle path system
parking lots
playground
site furniture
miniature golf course
retention ponds
site lighting
site utilities
landscape development

Construction Budget

\$2.4 million



After acquiring one of the largest remaining undeveloped parcels in the City of 39 acres in the Park District commenced on the development of a community park to serve the recreational needs of the entire City.

Critical to the development of the site was the location of four major program components: community center/theater/senior citizen center; miniature golf course; playgrounds; and athletic fields.

Unique to the project was the cooperative agreement with the City of Des Plaines in the joint development of four retention ponds for flood control. The ponds also serve as aesthetic elements at the two entrances to the park.



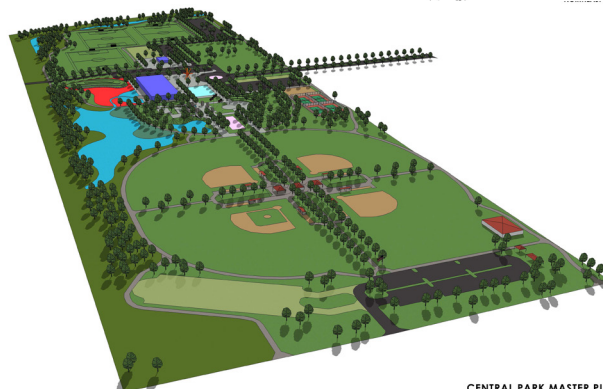
Central Park Master Plan Dyer, Indiana

The Central Park Master Plan for the Town of Dyer has evolved over the last four years. After the purchase of 77 acres and the implementation of basic site improvements the Park Board engaged Robinson Engineering and Land Design Collaborative to complete the Park's Master Plan and implementation design process.

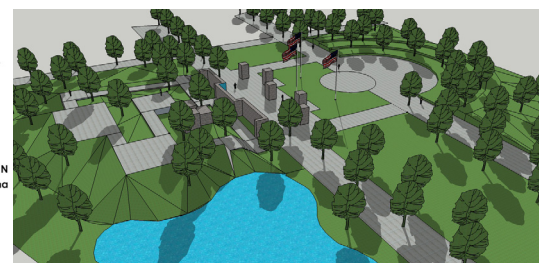
Three Park Board directives drove this community park's design:

1. Central Park is a park for everyone.
2. The Park's design is cohesive.
3. The Park is respectful of its neighbors.

The Central Park design is based on a strong activity core and a strong north/south axis through the center of the park giving patrons easy access from parking to activities. No one sport or activity dominates the park, its facilities include soccer, baseball, a dog park, nature walking trails, tennis, amphitheater, play area, picnic area and Veteran's Memorial appealing to a wide range of users. A pedestrian and bicycle pathway system provides internal circulation and a connection to a regional bikeway system.



CENTRAL PARK MASTER PLAN
Town of Dyer, Indiana



Client
Town of Dyer, Indiana

Service Provided
alternative concepts
master plan
phasing options
construction drawings

Design Elements
center core
community center
picnic shelter
soccer field
baseball fields
dog park
walking trails
tennis courts
amphitheater
play and picnic area
Veteran's Memorial
common plaza
links to bikeways and pathways



Berens Park Redevelopment Plan

Elmhurst, Illinois

Client

Elmhurst Park District
Elmhurst, Illinois

Service Provided

alternative concepts
master plan
phasing options
construction drawings

Design Elements

micro golf course
spray ground
baseball fields
soccer fields
parking lots
recreation building
shelter
batting cages
wetland preservation
slide park
sand volleyball
basketball



Bordered by residential neighborhoods to the east, west and south and by a commercial development to the north, Berens Park is one of the largest parks within the Elmhurst Park District. Working with a team of consultants, Land Design Collaborative, Inc. created a master plan for redevelopment of the park, a budget and a strategy to construct the 60-acre park in two phases.

Phase one construction documents consisted of a micro golf course, spray ground, cross country path, recreation building, two parking lots, four baseball fields, soccer fields, and batting cages. In phase one, all of the infrastructure needed to support the above activities was also constructed. The first phase cost approximately four million dollars.

Phase two construction of the playground, volleyball and basketball courts, skate park and a shelter building will complete the master plan. This phase is scheduled to start soon after the completion of phase one.

Elmhurst Park District was recognized as a 2004 Illinois Park and Recreation Association "Site Facilities Renovation" Award Winner.



Client

City of Evanston, Illinois

Service Provided

- tree inventory
- user survey
- reforestation plan
- construction plans
- construction administration
- public meetings
- consensus building



The City of Evanston has over 40 acres of public parks along the lakefront of Lake Michigan. James Gamble, president of Land Design Collaborative (LDC), was the principal designer of award-winning improvements to these parks that spanned his employment with two Evanston design firms and LDC. His designs included the preparation of a reforestation plan for shade trees to replace mature elms, bike

path improvements, the design of the lagoon, shelter area, and boat ramp access and parking. Mr. Gamble also conducted an on-site user attitude and interest survey and created conceptual designs for park and beach improvements for Dempster and South Boulevard beach areas.

The lagoon improvements received the Midge Perkins design award.

Client

City of Evanston, Illinois

EVMark

Service Provided

cost estimates

streetscape

revitalization plans

alternative concepts

design & construction
documents

prime consultant &
project management

construction administration

Design Elements

brick & paver walk
planters

increased street parking

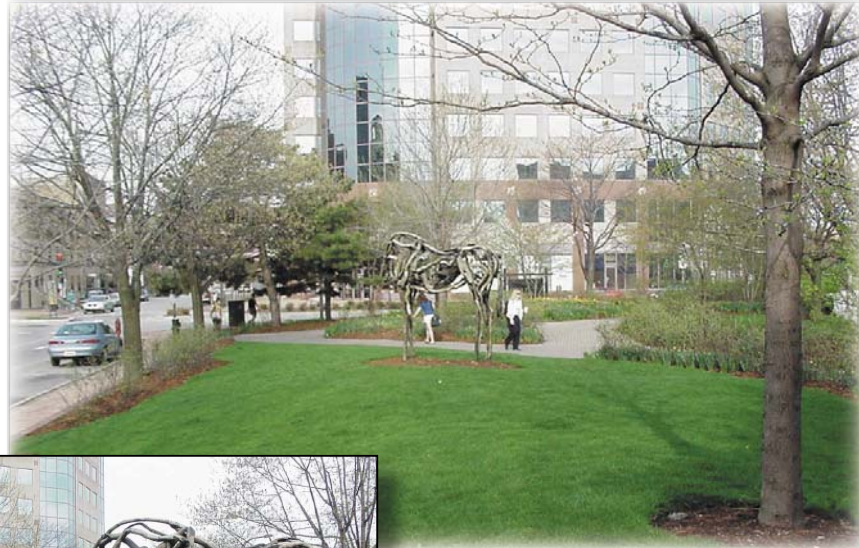
public art

sidewalks

traffic signals

landscape development

street & ornamental
lighting



Land Design Collaborative contributed to the design effort of Oldberg Park, working with the Northwestern University landscape architect and a private donor for the sculpture by Debra Butterfield. The park was also upgraded with new walkways and special paving. Installation of the sculpture was coordinated and detailed as part of the overall Downtown Redevelopment Project for which LDC was Prime Consultant.

Glencoe Open Space Master Plan

Glencoe, Illinois

Client

Glencoe Park District
Glencoe, Illinois

Service Provided

community needs
assessment

inventory & analysis
of resources

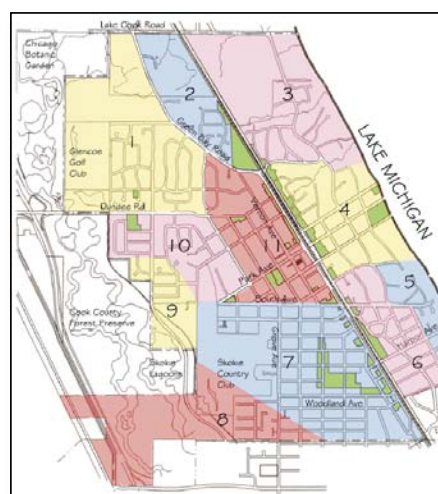
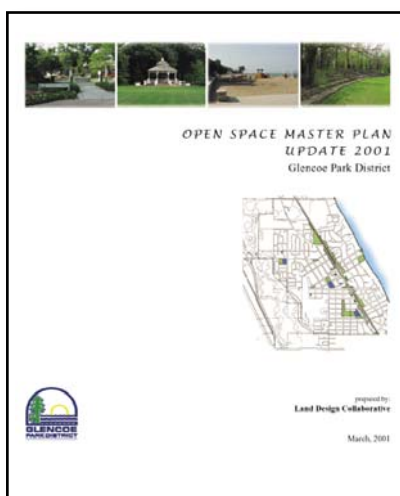
policy framework

program evaluation

future park &
trail system plan

park improvement
recommendation
& cost estimates

implementation plan





Lakefront Park Phase I Beachfront

Glencoe, Illinois

Client

Glencoe Park District

Service Provided

program development
alternative concepts
public participation meetings
master plan
cost estimates
implementation planning
phase I design & construction documents
construction administration

Design Elements

pathways
pier redevelopment
playgrounds
site furniture
scenic overlooks
terrace and trellis
picnic areas
swimming beach
site utilities
signage
landscape development

Construction Budget

\$0.7 million

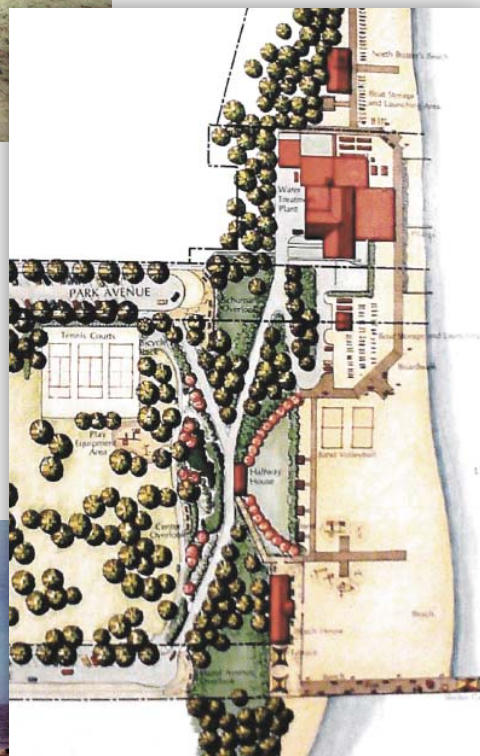


Lakefront Park, located on Lake Michigan, consists of 8 acres which provide park users with a number of recreational opportunities. Land Design Collaborative, Inc. completed a Master Plan for the renovation of the Park.

Phase I of the Master Plan was implemented with the renovation of the beachfront. The Park District received

an OSLAD grant for this phase of work, which consisted of the beach house renovation, pier surfacing and fencing, new playground, boardwalks, picnic trellis, lighting, site furniture and stone terrace paving

The Phase I Beachfront development received an Outstanding Project award from the Illinois Park and Recreation Association.



Client

Glencoe Park District
Glencoe, Illinois

Service Provided

site evaluation
program development
alternative concepts
public consensus process
master plan
cost estimating
OSLAD Grant assistance
construction design documents
bidding
construction administration services

Design Elements

gazebo
pathways
bicycle trail
playground
picnic area
tennis courts
landscape plantings
park signage



Based on the Park District's comprehensive Open Space plan as prepared by Land Design Collaborative (LDC), it was recommended that a Master Plan be prepared for Shelton Park incorporating a number of site improvements. The existing park encompasses an area of approximately 7 acres, and is long and narrow with a maximum width of 250 feet. The park is bordered by the metro railroad on the west and single family residential along the south and east.

LDC prepared the Master Plan which included an extensive public input process to gain consensus from the neighborhood. Issues addressed in the Master Plan included; (a) separation of pedestrian paths and the Green Bay Bike Trail for safety of park users; (b) renovation of existing playground to meet current ADA and CPSC guidelines; (c) renovation of existing tennis courts to improve playing conditions; (d) improve drainage conditions to prevent ponding; and (e) create native plant buffer along adjacent railroad tracks. Critical to the renovation of the park was the preservation of numerous large oak trees.

LDC assisted the Park District in obtaining an OSLAD Grant for development, and prepared construction design documents and provided construction administration during the implementation of site improvements. Park improvements were completed in the fall of 2005.

Client

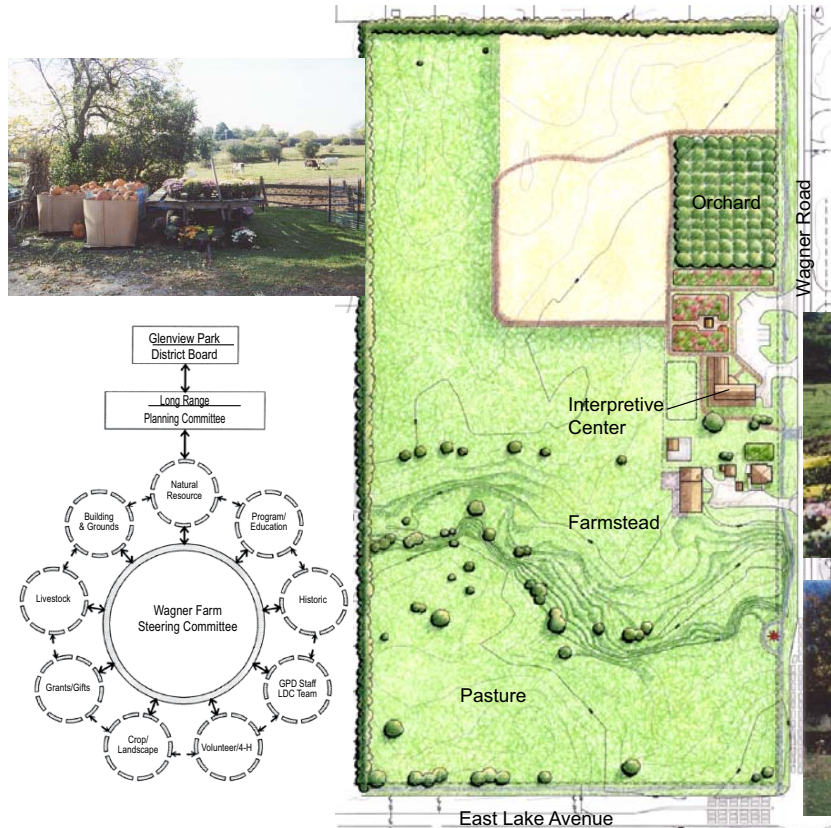
Glenview Park District
Glenview, Illinois

Service Provided

master plan
program development
alternative concepts
consensus building

Design Elements

pathways
roads & parking
fencing
scenic overlooks
pasture
croplands
gardens



Wagner Farm has been a community fixture since the late 1830s. Today it is particularly valued for its ability to provide a window to the past. The residents of the Glenview Park District saw purpose in keeping the 18-acre farm and passed a Farm and Fields Referendum to purchase the farm in July of 2000.

Shortly thereafter, the Park Board solicited volunteers for an eighteen member Steering Committee and eight Sub-Committees, whose purpose was to develop a Master Plan recommendation for Wagner Farm. At the same time Land Design Collaborative, Inc. (LDC) and its team of consultants was selected to work with the Steering Committee and Park District to facilitate the development of the Master Plan.

A consensus process was structured to provide hands-on involvement of the Steering

Committee, gain public input, identify and prioritize the significant issues related to the enhancement of the farm.

Through input from public listening sessions, work shops, and Sub-Committees' work, the

Steering Committee arrived at a mission and vision statement and program uses for the farm. Concept plans were prepared by the consultant team to investigate alternatives. The approved Master Plan for Wagner Farm allocates land for crops, orchard, gardens, pasture and buildings, including a new Interpretive Center.



Comprehensive Park Master Plan

Hampshire, Illinois

Client

Hampshire Township
Park District

Service Provided

- inventory of resources
- demographics and trends

open space and
park standards

policy framework/
goals and objectives

park improvement
and acquisition
recommendations

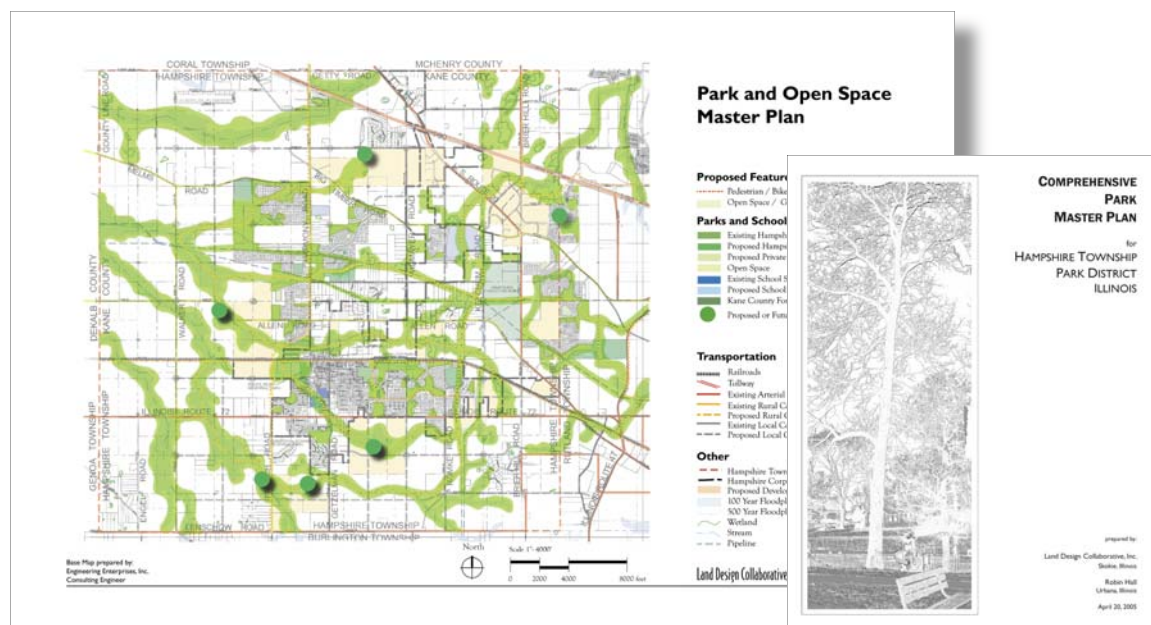
recreational program
evaluation and
recommendations

capital improvement
program

Design Elements

open space/greenways
park system

bicycle/pedestrian trail



Land Design Collaborative, Inc. was selected by the Hampshire Township Park District to prepare a Comprehensive Park Master Plan. Based on proposed and future developments within the District's boundaries, it is projected that the population over the next ten years will grow from 6,500 people to over 20,000, with an additional 350 acres of new park land donated to the District.

The Park and Open Space Master Plan identifies the need for new neighborhood and community parks, and delineates an Open Space/Greenways System that conserves and protects natural resources and links parks, schools and community facilities with residential developments throughout the District. Over 6,000 acres are identified for open space and greenways.

In order to meet the challenges related to growth, the Comprehensive Plan includes:

- Inventory of resources
- Demographics and recreation trends
- Development of park classification system and standards
- Policy framework including goals and objectives
- Evaluation of recreation programs
- Park service area analysis for existing and proposed parks
- Park and Open Space Master Plan
- Evaluation of maintenance practices and program
- Comprehensive pedestrian and bikeway system

Implementation of the Plan identifies over fifty recommendations in the following categories:

- Financial and referendum
- Inter-agency cooperation
- Operations and policy
- Recreation programs
- Park land donation and acquisition
- Maintenance
- Land and facilities
- New facilities

The Comprehensive Park Master Plan for the park district will serve as a compass to guide the board of commissioners in making decisions and achieving its mission.



Comprehensive Park Facilities Master Plan

Hinsdale, Illinois

Client

Village of Hinsdale
Hinsdale, Illinois

Service Provided

open space & park
standards

community needs
assessment

inventory of resources

policy framework

park improvement
recommendations

acquisition
recommendation

implementation plan



Land Design Collaborative, Inc. (LDC) was selected by the Village of Hinsdale to assist the Hinsdale Park and Recreation Commission in developing a Comprehensive Park Facilities Master Plan.

The comprehensive plan includes:

- open space and park standards
- a community needs assessment
- an inventory of resources
- a policy framework
- park improvements & recommendations
- an implementation plan.

The comprehensive plan will serve as a guideline for the improvement of park and recreation facilities over the next ten years. It identifies specific projects to be implemented, sets priorities and schedules, and defines expected costs.

In addition to improvement recommendations for the existing parks, the comprehensive plan also includes suggestions for the location of parkland acquisitions, skate parks, pedestrian connections between parks, band shell, community recreation center and other special facilities.




Comprehensive Park Facilities Plan

Lake Forest, Illinois

Client
City of Lake Forest

Service Provided
park site and facilities
inventory
park analysis
demographic evaluation
programs evaluation
park acquisition
recommendations
implementation
recommendations

PARKS/FACILITIES	PUBLIC ACREAGES			
	PARKS - ACTIVE	PARKS - PASSIVE	PARKS - SPECIAL USE	PUBLIC SCHOOLS
PLANNING AREA A				
Meadowood Park				
Lake County Forest Preserve District				
Lake Forest Open Lands Association				
Knollwood Golf Course				
Lake Forest Club				
Melody and Rt. 60 (Parcel A)				
totals	0.00	0.00	0.00	0.00
PLANNING AREA B				
Deerpath Golf Course			145.00	
Deerpath Community Park	25.60			
West Park	8.50			
Otwentia Club				
Deerpath Jr. High				23.00
St. Mary School				
Lake Forest Open Lands Association				
Ragdale (Parcel B)		5.40		
M.S. Entrance (Parcel C)		1.22		
Market Square (Parcel D)		0.45		
totals	34.10	7.07	145.00	23.00
PLANNING AREA C				
Triangle Park		2.60		
Lake Forest High School - East				25.00
Sheridan School				5.00
totals	0.00	2.60	0.00	30.00
PLANNING AREA D				
Tollway Park		8.60		
Everett Park	16.70	0.30		
Everett School				3.20
Subdivision outlots along tollway				
White Oak outlot				17.04
totals	16.70	8.90	0.00	3.20
PLANNING AREA E				
Norcroft Park	20.10			
Lake Forest High School - West				10.00
Grove School				
Lake County Forest Preserve District				
Lake Forest Open Lands Association				
Coventry outlot				
Compost Center (Parcel E)				
Carroll Meadows - south (Parcel F)				
Brinegan (Parcel G)				
Country Place outlot (Parcel H)				
Everett Triangle (Parcel I)				
Rt. 41 and 60 (Parcel J)				
totals	20.10			
PLANNING AREA F				
Buena Park				
Waveland Park	16.40			
Cherokee School				
Lake Forest Country Day School				
Lake Forest Open Lands Association				
Otwentia Garden				
Ponds Subdivision				
totals	16.40			
PLANNING AREA G				
South Park	12.10			
Forest Park Beach				
McCormick Nature Center				
Ringwood Park				
Lake Forest College				
Barr College				
Woodland Academy				
totals	12.10			
PLANNING AREA H				
Lake Forest Academy				
Conway Golf Course				
totals	0.00			
Bike Path - east				
Totals	99.40			

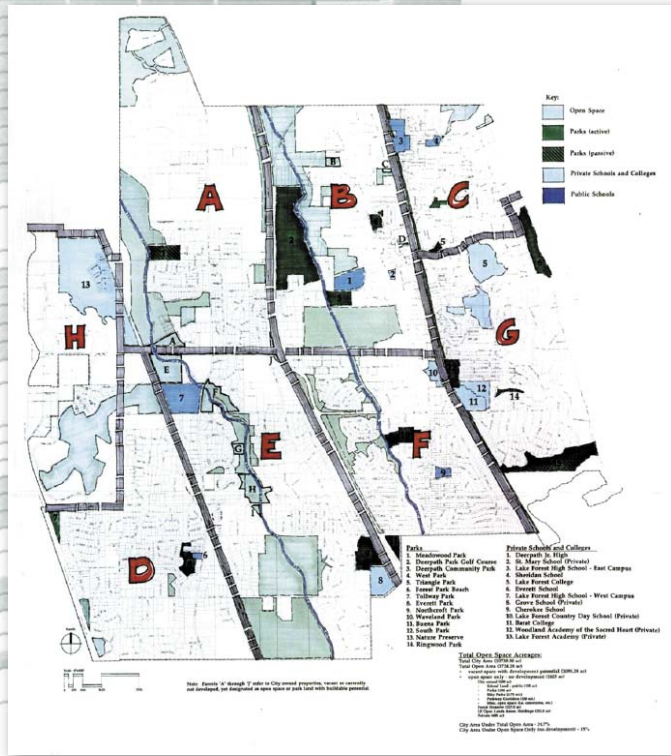


Comprehensive Park and Facilities Plan

for the
City of Lake Forest
as recommended by
The Master Parks Plan Committee

Prepared by:
Land Design Collaborative, Inc.
1563 Sherman Avenue
Evanston, Illinois 60201
708-328-4435/708-328-4599 FAX

October, 1995

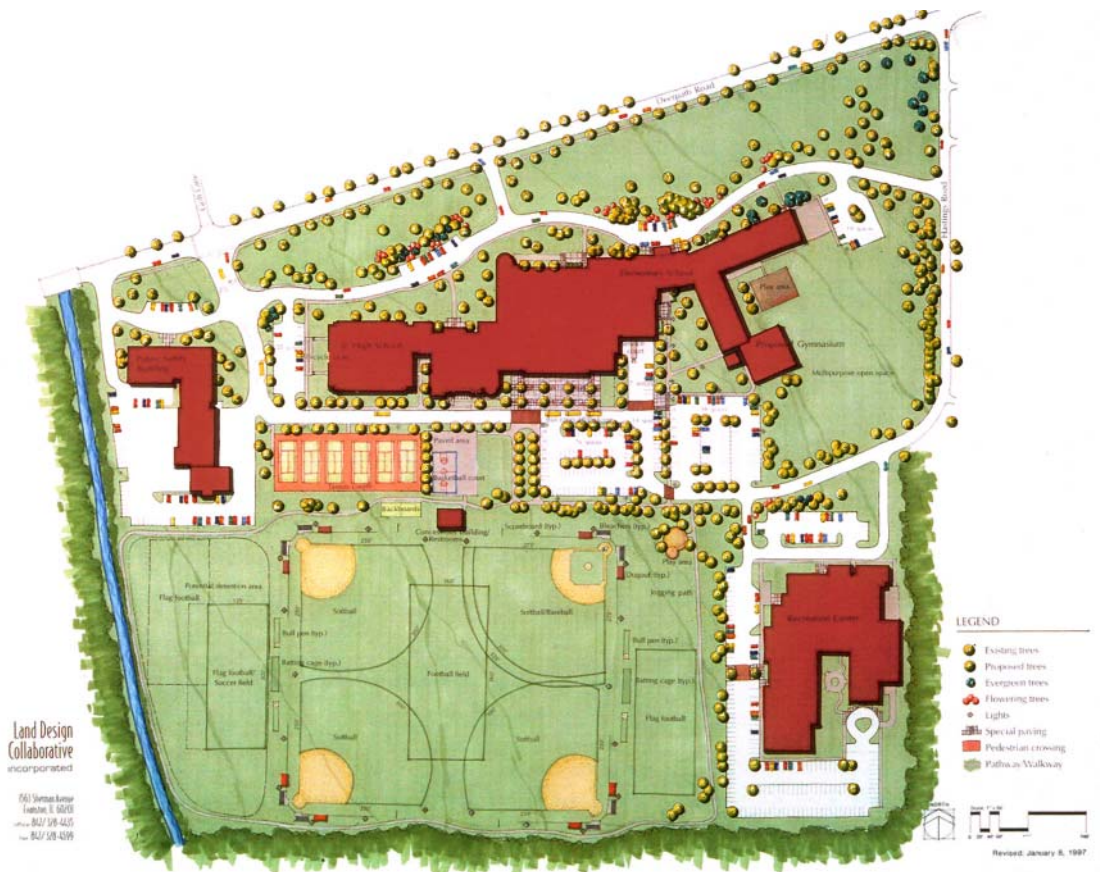


Client

City of Lake Forest, Illinois

Service Provided

site masterplan
site analysis
alternative concepts
consensus building
pedestrian facilities
recreation facilities
traffic circulation
parking
sports field design



LDC developed a master site plan to integrate a number of existing facilities that occupied the site. These uses include a police and fire safety building, an elementary/middle school, a recreation center, playground and lighted baseball fields. LDC's assignment was to enhance the uses of the site while minimizing conflicts and promoting safe pedestrian access for students and park users. Key plan elements include:

- Park access for school children who use the facilities in their school programs;
- Safe vehicular drop-off and parking locations for school bus and parents;
- Access to the recreation center for members;
- Potential recreation center building expansion.

LDC led the development of construction plans for sports field renovation and lighting of the four ball fields, which included improved drainage and repositioning of certain fields to more efficiently use the limited available space. The lighting of the ball fields has extended the hours of play and has helped meet the immediate demand for additional ball fields.

Client

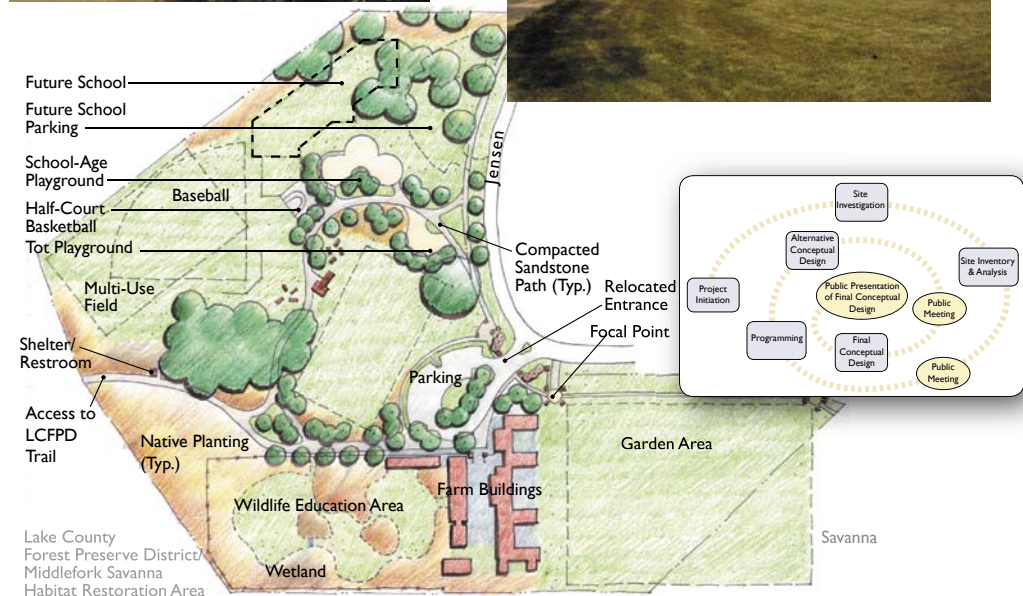
The City of
Lake Forest, Illinois

Service Provided

public process
master plan
alternative concepts
program development
grant assistance
construction drawings
construction observation

Design Elements

multi-use field
native planting
play areas
pathways
fencing
shelter
picnic area



The historic Elawa Farm in Lake Forest was developed in 1917 for A. Watson Armour, a member of one of Chicago's oldest and most distinguished families as a "gentleman's farm." The character of Elawa Farm Park draws on the beauty of the savanna and open fields that surround the property and its characteristic early 20th century red-brick architecture.

Through a series of public hearings, Land Design Collaborative, Inc. (LDC) developed a program statement to assist the City in establishing the goals and objectives for the Elawa Farm Park. Using the information gathered through the public process and during site inventory and analysis, LDC developed two preliminary concepts to address the functional and aesthetic

aspects of the site. Through public comments and direction from the Board and staff, a final concept and cost estimate were developed.

On receipt of an OSLAD grant for construction the City of Lake Forest retained LDC to prepare construction drawings and provide construction observation services. The design of the park and the selection of plants and construction materials makes reference to the historical and natural resources of its surroundings. Native savanna plants were used, together with crushed sandstone trails and are complemented by a shelter based on a contemporary interpretation of a barn. The park also incorporates tot and school-age play areas, basketball court, trails and horseshoe courts.

Everett Park and School

Lake Forest, Illinois

Client

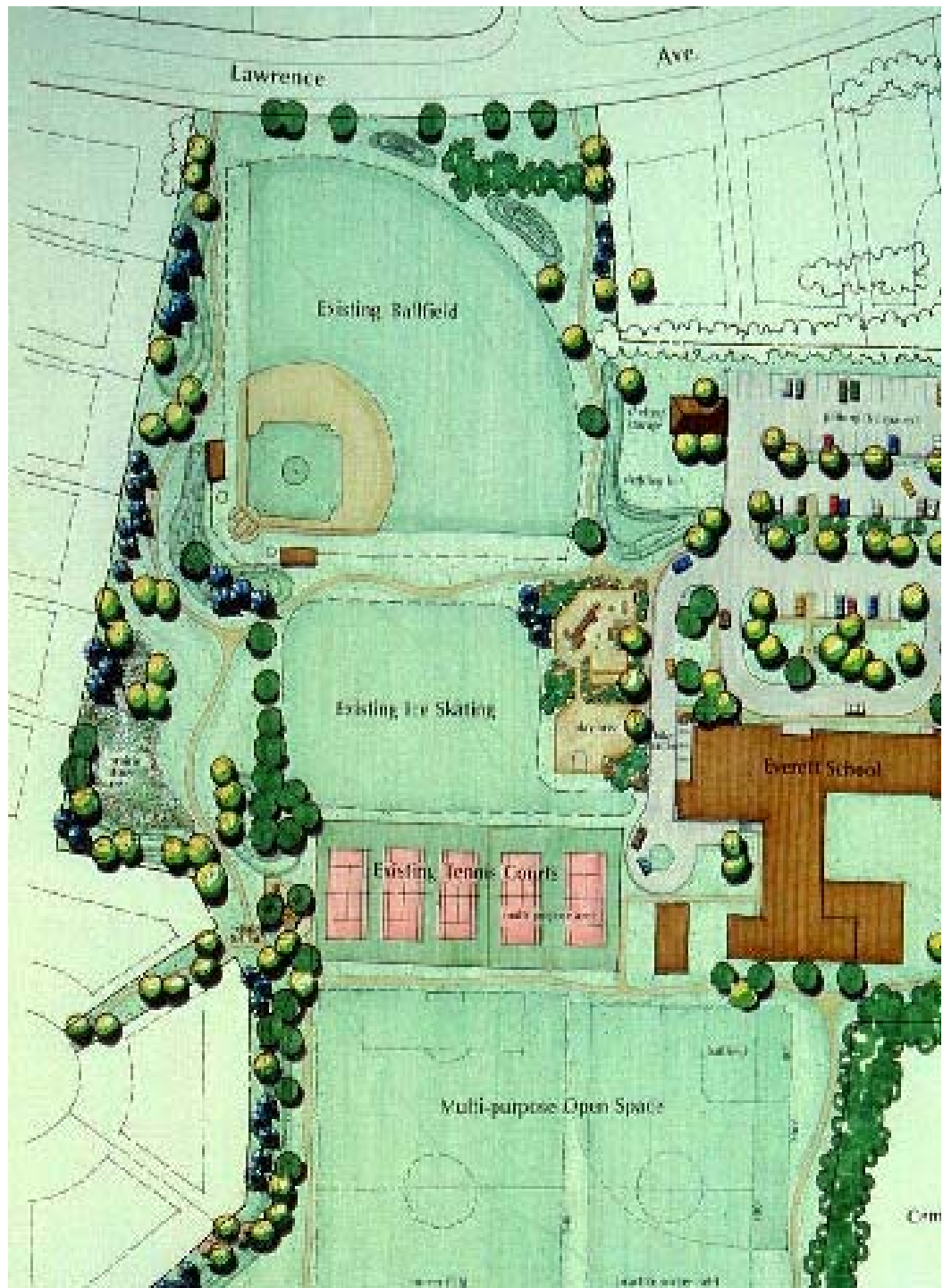
City of Lake Forest

Service Provided

program development
alternative concepts
public participation
meetings
cost estimates
master plan
implementation planning

Design Elements

pathways
multi-purpose athletic
fields
tennis courts
playgrounds
bicycle path system
roads and parking
storm drainage
site lighting
landscape development



Northcroft Park Lake Forest, Illinois

Client

City of Lake Forest

Service Provided

cost estimates

master plan

implementation planning

design & construction
documents

construction administration

Design Elements

parking lot

site lighting

retaining walls

entrance drive

playground

tennis courts

site furniture

ice skating area

bicycle trail

warming house and
community center

athletic fields

landscape development

Construction Budget

\$1.0 million



Land Design Collaborative, Inc. was selected to develop the Master Plan and Construction Documents and provide Construction Phase Services for the development of Northcroft Park.

The site is a unique balance of open space and heavily wooded areas, which required special sensitivity in the design of facilities. Large stands of oak trees were preserved while meeting the recreation program for sportsfields, ice skating, playground and tennis courts. Topography was a unique natural feature of the site and was utilized by LDC to accent a graceful entry roadway and parking lots. Recreation facilities were located strategically to work with the topography. A pedestrian / bike way was developed within the park and linked to regional bike ways passing nearby.

Stevenson High School
Lincolnshire, Illinois

When Stevenson High School acquired an adjacent 40 acre tract of land (existing site was 60 acres), Land Design Collaborative, Inc. was contracted to develop a Master Plan for the total acreage, with emphasis on the development of athletic facilities.

The Master Plan had to take into account future school building expansion and the development of athletic facilities for both intramural sports and league competition sports.

A series of workshops were conducted by LDC with sports staff and coaches in the development of the Master Plan.

LDC was involved in the construction design for the new and renovated sports facilities, which was implemented in five Phases.

Client

Adlai E. Stevenson
High School District

Service Provided

program development

alternative concepts

cost estimates

master plan

implementation phasing

planning

design and construction
documents

construction administration

Design Elements

walkways

baseball fields

softball fields

soccer fields

football fields

tennis courts

automated irrigation
system

roadway

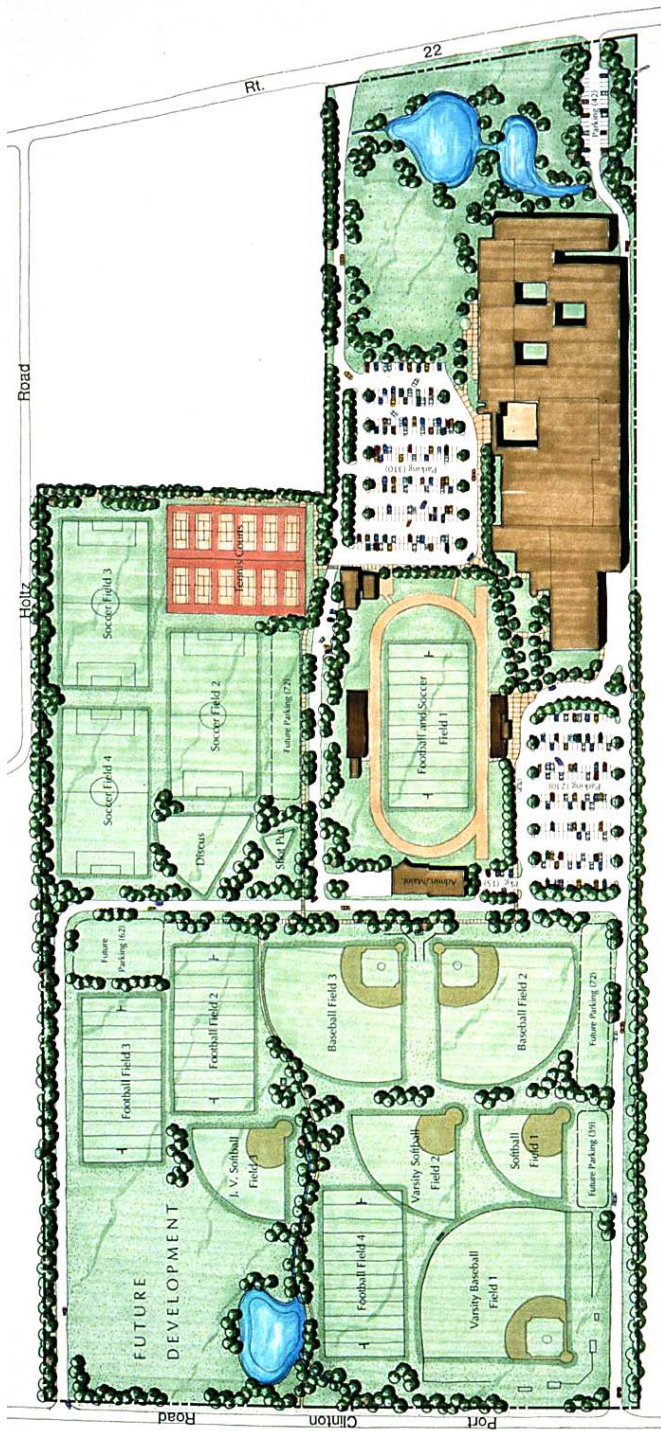
site utilities

storm water
management facilities

landscape development

Construction Budget

\$2.4 million





Channel Runne Park Master Plan

Lincolnwood, Illinois

Client

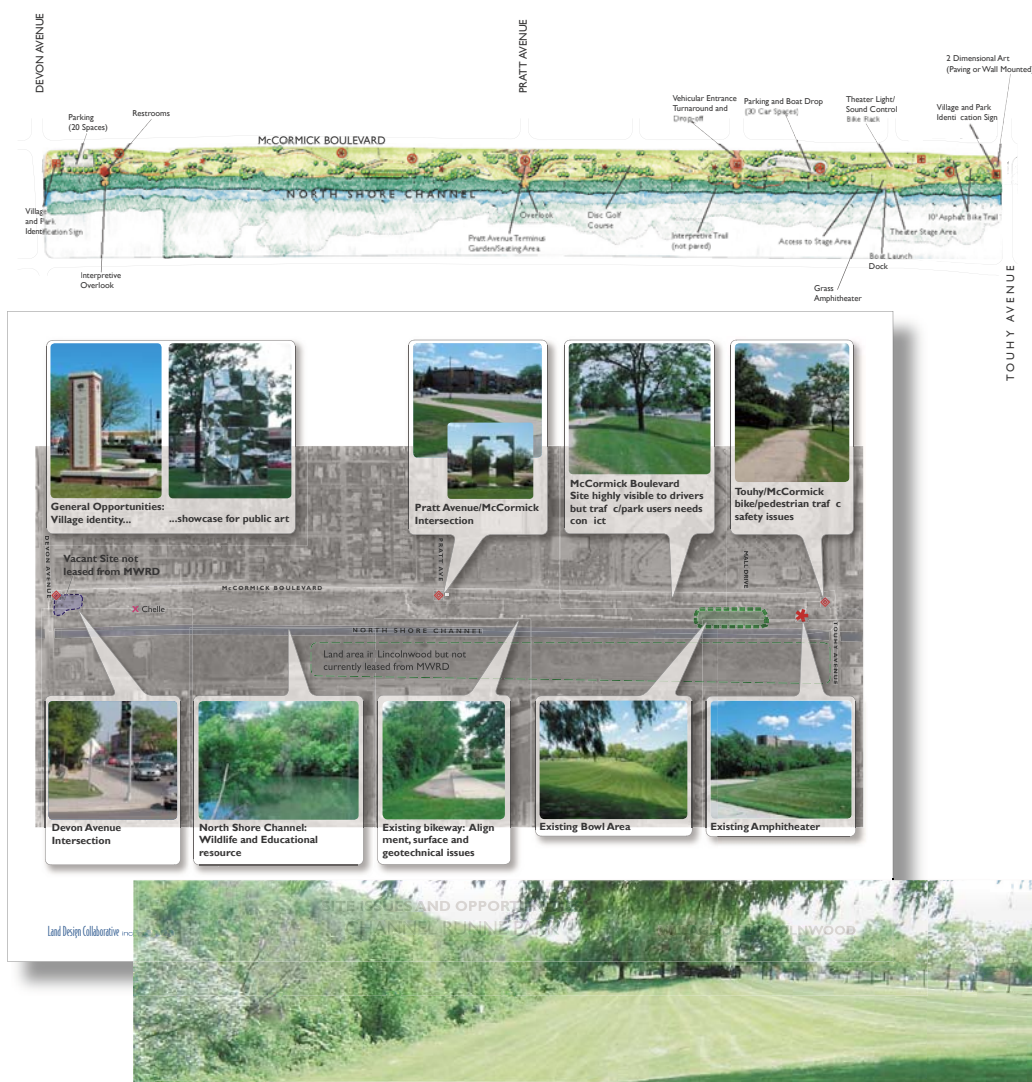
Village of Lincolnwood
Lincolnwood, Illinois

Service Provided

site inventory
public art inventory
alternative concepts
master planning
public process
funding sources analysis
implementation planning

Design Elements

bike trail
public art
amphitheater
boat access
parking
overlooks
interpretive trails



LDC was commissioned to create a master plan for this largely passive-use, 20-acre site adjacent to the North Shore Channel in Lincolnwood. The goal was to create a series of realistic park improvement projects that respect the tranquil, passive nature of the site while maximizing grant funding potential.

With input from the Village Staff, Park Board and the public, LDC carried out an inventory of existing conditions, examined possible improvements, and compiled alternate design approaches. This process culminated in the production of a final master

plan and a detailed multi-stage budget and implementation plan.

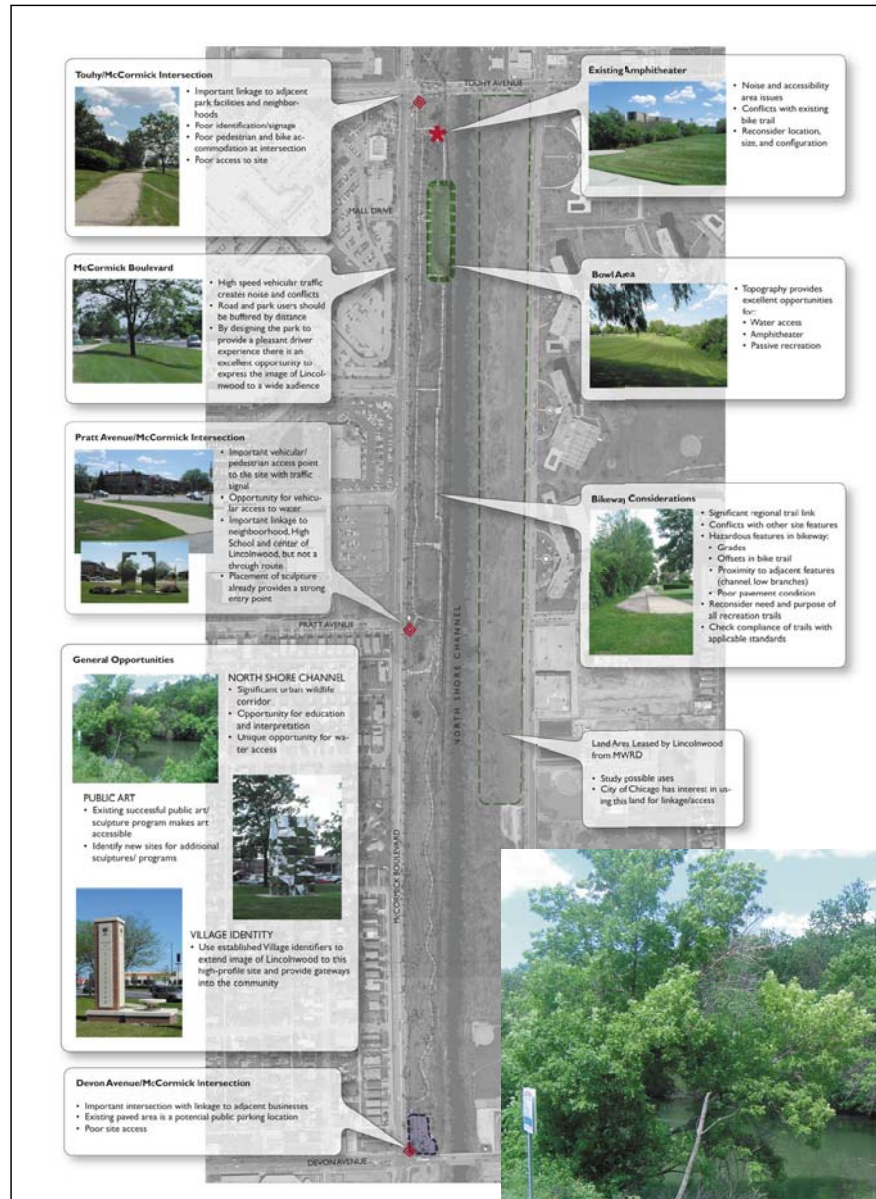
Features of the Final Master Plan include an improved bike trail system; grass amphitheater adjacent to the channel; water access with small boat launch facilities; improved locations for public art; improved views and access to the North Shore Channel, including overlooks and nature trails; parking facilities; and public gardens. The plan was approved in September 2005 with a goal to implement the first trail improvement project in 2006-7.

Client

Village of Lincolnwood
Lincolnwood, Illinois

Service Provided

site inventory
conceptual design
public impact
master planning



The Lincolnwood Channel Runne Park is located between McCormick Boulevard and the MWRD Canal from Devon to Touhy Avenue. Land Design Collaborative, Inc. (LDC) prepared a park master plan that addressed bikeway path improvements, sculpture locations, landscape, and boat launch facilities in the canal. Special pedestrian plazas, ornamental plant beds and pedestrian crossings at McCormick Boulevard were also addressed by the plan. An implementation and funding strategy plan was developed to dovetail implementation phases with grant funding programs.



Lincolnwood Village Hall Promenade Lincolnwood, Illinois

Client

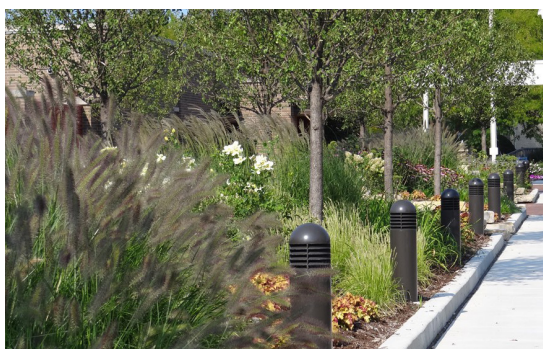
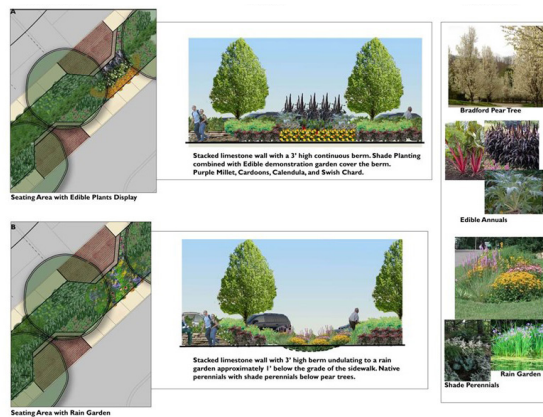
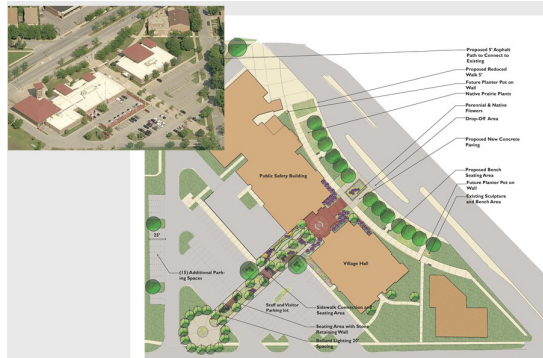
Village of Lincolnwood,
Illinois

Service Provided

develop garden design
resolve drainage issues
improve growing
conditions
conservation design

Design Elements

safer pedestrian circulation
landscape restoration
native plants
attractive and welcoming
promenade
plaza and large lawn areas
alcoves and shade trees
for seating and walkways



A landscape design plan was developed, providing the community with a village hall that reflected the Village's commitment to developing spaces that "promotes the health, safety, welfare and pleasure of all the residents (Lincolnwood Parks and Recreation Mission Statement)," and that "preserves, protects and enhances the natural environment of the Village (Lincolnwood Beautification Commission)."

To meet the goals, a plan was developed to replace deteriorated entry concrete walks and planters missing shade trees to achieve an attractive entry suitable to the importance of the Village administration buildings. An attractive linear bermed "garden" to the Village's offices was developed to soften the impact of parking and eliminate vehicular cross-access for safer pedestrian circulation.

The landscape architect was responsible for developing a beautiful garden design, solving drainage and poor growing conditions, while creating safe pedestrian walks and seating in an area surrounded by vehicles. Starting in the beginning planning stages and through to completion the landscape architect worked with the Village, Beautification Committee, and community members in order to ensure that their vision and needs were being fully met.

The Village Hall Promenade site provided an excellent opportunity to introduce native and natural landscapes to the community. To this end, the Promenade incorporates native perennial plants. The large lawn areas in front of Village Hall offered opportunities for native landscapes containing prairie plantings. The smaller formal beds adjacent to the building and in the plaza use traditional landscape plants including shrubs, perennials and annuals for accent purposes.

- The landscape plants are planted in a 42 inch high landscape berm surrounded with a 6 inch concrete curb
- Shade trees, light bollards, barrier bollards, are aligned the length of the walk
- Small alcoves are created along the peninsula with natural stone seat walls
- The alcoves have elevated plantings for access for the physically challenged
- The primary concrete sidewalks are 8 feet wide with brick accent areas
- Existing pedestrian scale lights were replaced with bollard lights



Hill Street Nature Center

Mt. Prospect, Illinois

Client

Mt. Prospect Park District
Mt. Prospect, Illinois

Service Provided

program development
alternative concepts
master plan
cost estimate
construction design
bidding
construction administration

Design Elements

shelter with interpretive
panels
pathways
parking
playground
wetlands
boardwalk
team building activity
course
picnic area
native plantings



With the help of state grants, Mount Prospect Park District purchased this 4.5-acre former plant nursery site to be developed as a nature center. LDC was commissioned to create a master plan illustrating possible development of the site, focusing on largely passive recreational uses and its educational potential.

Although structural and accessibility problems prevented the existing farmhouse from being retained, much of the original plant material was considered a valuable resource and was carefully incorporated into the site plan: Existing stands of ever-

greens form a natural buffer from the adjacent neighborhood and an existing depression forms a central wetland area traversed by a boardwalk. The site also incorporates a playground, parking to accommodate school buses, team building course and a stone council ring for use as an outdoor classroom.

After the receipt of an OSLAD grant for development, LDC was retained to prepare construction documents and subsequently provided construction administration services. The project was completed in the summer of 2006.



Meadowhill Park

Northbrook, Illinois

Meadowhill Park Addition provided for the acquisition of 45 acres adjacent to the existing Meadowhill Park, which was developed extensively with active recreational facilities.

A portion of the new park site was a 15 acre detention basin managed by the Metropolitan Water Reclamation District. The Basin was developed with native prairie plants to reduce maintenance and provide a unique natural educational resource. In addition, the north branch of the Chicago River bisected the site and required special design considerations relative to access and overall circulation for pedestrians and bicycle users.

Client

Northbrook Park District

Service Provided

program development
alternative concepts
public participation meetings
master plan
cost estimates
implementation planning
design & construction documents
construction administration

Design Elements

pathways
athletic fields
sport field lighting
automated irrigation system
bicycle path system
parking
native prairie plantings
site furniture
pedestrian bridge
shelter
sledding hill
site utilities
landscape development

Construction Budget

\$1.6 million



Client

Northfield Park District
Northfield, Illinois

Service Provided

site analysis
public process
alternative concepts
master plan
OSLAD grant application
construction documents
construction administration

Design Elements

gazebo
tot playground
school-age playground
ice-skating area
community buildings
pathways



Land Design Collaborative, Inc. (LDC) was retained to design the renovation of Clarkson Park, and assist in obtaining state grants and fund raising efforts.

facilitates for adult supervision. A gazebo was added to the northwest corner of the playground to provide a seating area for caretakers.

The design proposed a consolidation of the individual play areas into a single playground with a planting island as a buffer between the tot and elementary-age play areas. This consolidation created more open space area for free play, a picnic area and

New plantings, plaza area, and pathways were developed to accommodate the needs of the new building. New lighting was also added along the walkway to enhance safety and encourage night-time use.



Comprehensive Facilities Master Plan

Northfield, Illinois

Client

Northfield Park District
Northfield, Illinois

Service Provided

- park site and facilities inventory
- park analysis
- demographic evaluation
- community needs survey
- park acquisition recommendations
- bike trail system
- implementation recommendations

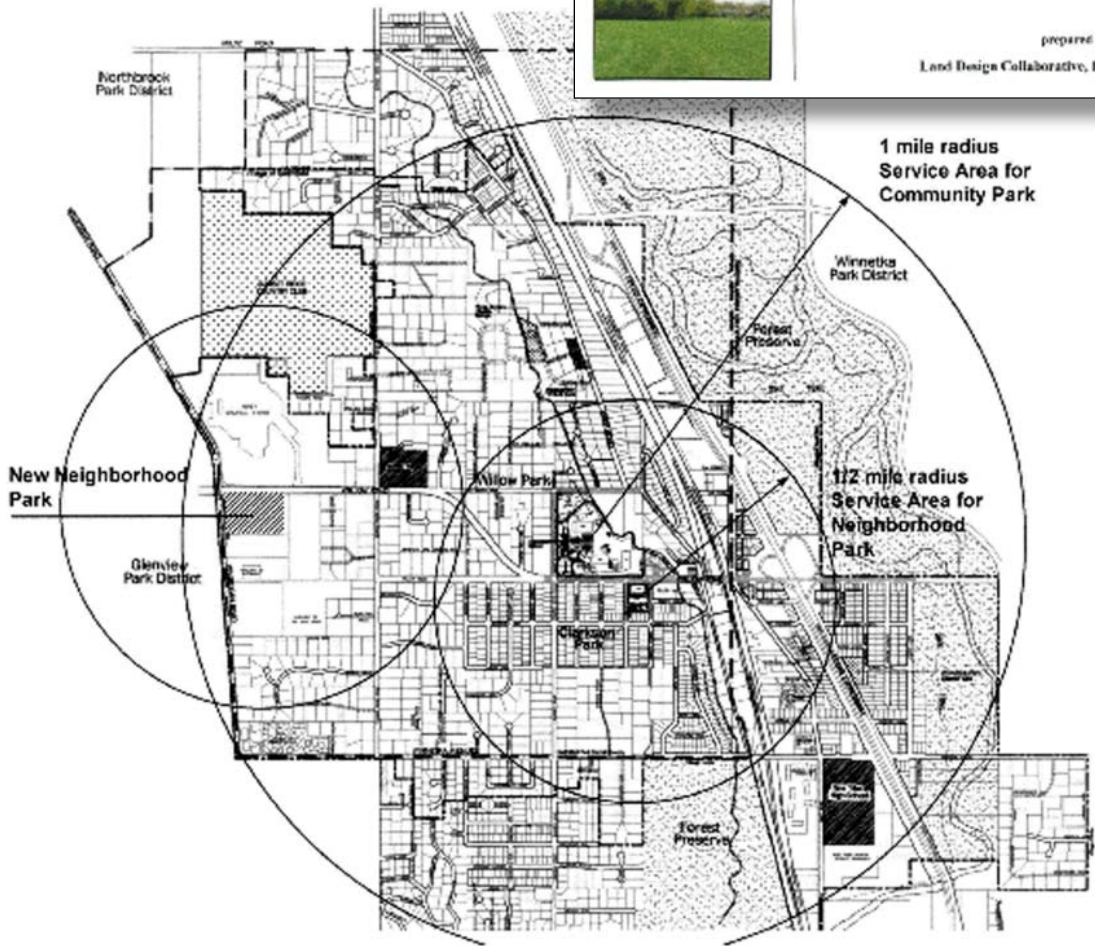


**Northfield
Park
District**

**COMPREHENSIVE
FACILITIES
MASTER
PLAN**

prepared for
Northfield Park District
Northfield, Illinois

prepared by:
Land Design Collaborative, Inc.



Client

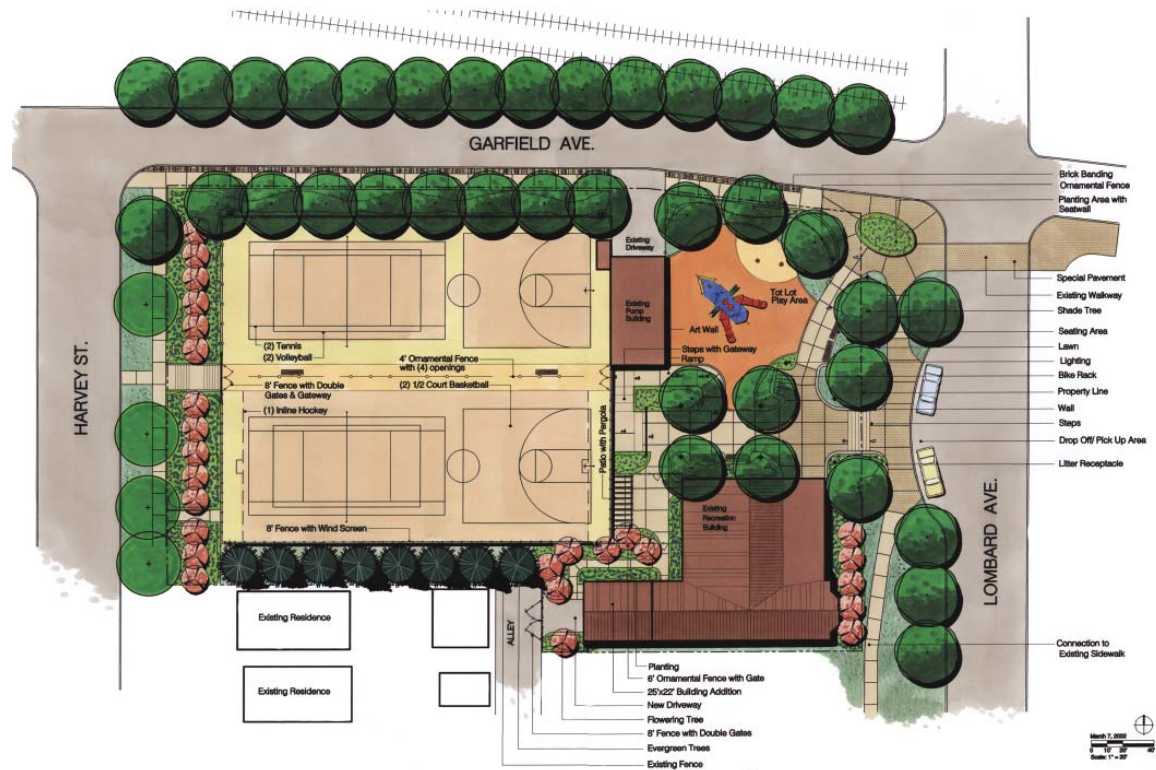
Park District of Oak Park

Service Provided

public process
master plan
alternative concepts
program development
cost estimate
construction documents

Design Elements

tennis/volleyball courts
half-court basketball
in-line hockey
tot playground
art wall
entrance feature
pathways
fencing
seawall
drop-off area



Following an Oak Park tradition of naming parks after renowned authors, Barrie Center Park was named after J.M. Barrie, the author of "Peter Pan".

The park is located on a corner, abutting a residential area on the south with streets bordering the three remaining sides. An evergreen hedge serves as a buffer between the park and the side of an existing residence, while shade and ornamental trees serve as frontage for the three other sides of the park.

Tennis/volleyball, in-line hockey and two half-court basketball courts are proposed

on an existing concrete deck atop a raised water tank. The concrete decking currently shows signs of wear and tear. A modular rubber sports field surface is proposed as a cover, offering a smooth and economical surface for various sports activities.

To minimize disruption to traffic flow, a passenger drop-off/pick-up area is proposed on Lombard Avenue.

In honor of Sir Barrie, the tot playground is designed with a "Peter Pan" theme and a "Peter Pan" art wall is proposed for the facade of the adjacent pump building.

Rehm Park Playground

Oak Park, Illinois

Client

Park District of Oak Park
Oak Park, Illinois

Service Provided

master plan
public listening sessions
construction drawings
construction administration

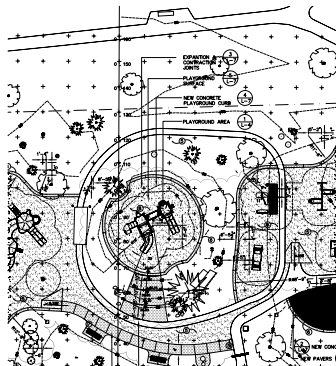
Design Elements

walkways
playground
landscape plantings
seating area



Rehm Park Playground, built around a custom model train, is a well used playground in Oak Park, Illinois. LDC designed the playground to include multiple play experiences—physical, social and imaginary—encouraging the development of physical and cognitive abilities and the development of social skills. Additionally, a new pathway system was created to better connect different areas of the playground, facilitating smooth transitions between various pieces of play equipment.

Following ADA guidelines, the playground is accessible to children of all ages with separate areas for tot and school-age children. To further diversify play experiences, LDC provided a variety of play surfaces that include wood fiber, and sand.





Heartland Riverfront Festival Park

Peoria, Illinois

Client

Peoria Park District
City of Peoria
Heartland Riverfront
Commission

Service Provided

program development
alternative concepts
public participation
meetings
cost estimates
master plan
implementation drawings
construction documents
construction administration

Design Elements

riverfront promenade walks
festival event facilities
restrooms
bicycle path system
parking lot
sculpture & fountains
site furniture
site utilities
landscape development



River walk promenade with
special railing over steel
sheet-piling wall

River walk promenade with
public art, benches, lighting,
and special utility (water and
electric) service distribution
boxes for special events



Concert/Festival
Event Controlled
Entrance Area



Heartland Riverfront Festival Park

Peoria, Illinois

Client

Peoria Park District

City of Peoria

Heartland Riverfront
Commission

Service Provided

program development

alternative concepts

public participation
meetings

cost estimates

master plan

design & construction
documents

construction administration

Design Elements

riverfront promenade walks

festival event facilities

bike path system

parking lot

sculpture and fountains

site utilities

landscape development



The development of its Illinois River riverfront has been the goal of the City of Peoria and Park District of Peoria for the last 20 years. Heartland Riverfront Festival Park encompasses approximately 28 acres bordering the Illinois River and the downtown. Land Design Collaborative, Inc. (LDC) worked with the Park District and the City in the joint development of a Master Plan for the park, which is part of the overall riverfront development effort.



The project received a merit award from the Illinois Chapter of American Society of Landscape Architects and an Outstanding Project Award from the Illinois Council of Engineers.



Patriots' Park

Riverside, Illinois



Client

Village of Riverside, Illinois

Service Provided

public process
master plan
alternative concepts
program development
construction drawings
construction administration

Design Elements

walkways
plaza
playgrounds
native plantings
feature gardens
stone seatwalls
handicapped parking

This Oslad Grant project is a 1.3 acre, neighborhood park located in historic Riverside. Patriots' Park was designed to fit within the context of Frederick Law Olmsted's plan for the community. Land Design Collaborative, Inc. (LDC) was retained to further develop the original program and concept, produce construction documents, and oversee the construction process.

LDC reconfigured the program elements to utilize the space more efficiently. The new design places the playground at the widest part of this elongated park, which is also the new entrance to the park. The tot and school-age playgrounds are separated by a circular paved plaza. A long, flowing berm separates and screens the park from a busy thoroughfare directly north of the park. Plantings in the park consist of predominantly native plants, including a butterfly and sensory garden. Long, verdant meadows and graciously sculpted earth forms adhere to Olmstedian design principles.





Farm Complex Meadowbrook Park

Urbana, Illinois

Client

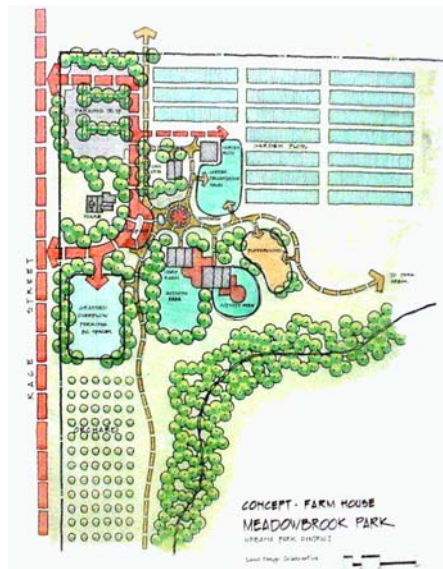
Urbana Park District

Service Provided

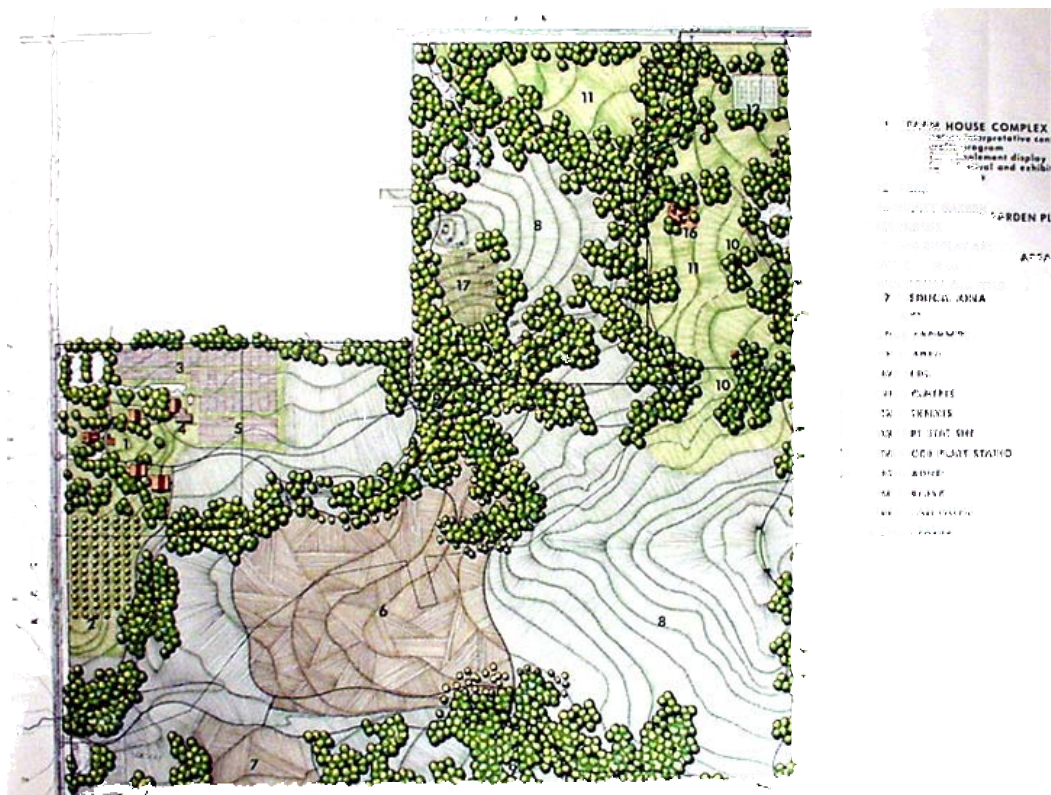
program development
alternative concepts
public participation meetings
master plan
cost estimates
implementation planning
design & construction documents

Design Elements

pathways
playgrounds
bicycle path system
parking
native prairie plantings
site furniture
pedestrian bridges
shelter
community gardens
site utilities
landscape development
farm house complex



Meadowbrook Park is a unique educational and recreational facility developed by the Urbana Park District. Formerly 115 acres of farm land typical of central Illinois, this park has been transformed into a blend of historical/educational facilities with active and passive recreational activities for the entire community. A major focus of the park is the recreation of a historical farm complex with educational exhibits and operating facilities. In contrast to the farm complex, a portion of the park has recreated the historical landscape of the prairie (60 acres) and native woodlands that dominated the landscape prior to settlement and farming. Subsequently, Land Design Collaborative has been requested to update its original Master Plan, and recently completed alternative concept plans for the acquisition of an additional 80 acres adjacent to the Park.



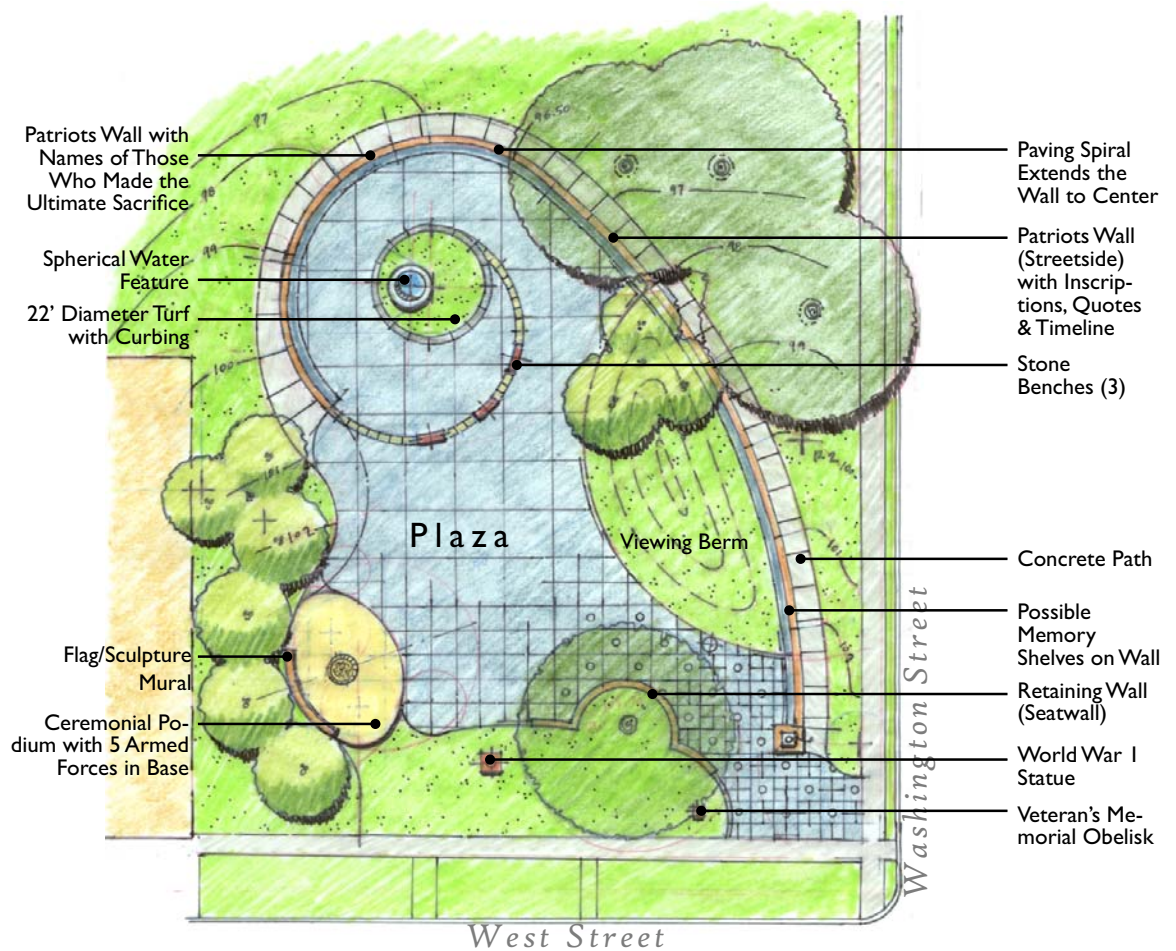
Washington Park Veterans' Memorial

Waukegan, Illinois

Client
Waukegan, Illinois

Service Provided
master plan
alternative concepts

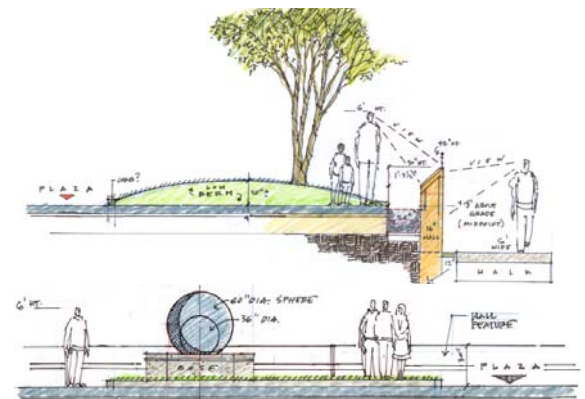
Design Elements
memorial wall
pathways
plaza
sculpture mural
spherical water feature
retaining wall



The proposed Washington Park Veterans' Memorial plaza functions as a gateway to downtown, while providing a memorial for all veterans of war. The design allows for various uses - dignified space to contemplate and pay tribute to the sacrifices of heroes, ceremonial congregations, or simply a place to sit.

The design utilizes the natural topography of the site (i.e., a dramatic drop in grade at the east toward the ravine) to create distinct areas of usage without conflicts. A spiral wall separates the active area of the plaza from the more solemn part. Visitors can walk along a wall inscribed with a timeline of various wars and the names of fallen heroes and leave mementos on the

memory shelves along the wall. The ever-spinning spherical water feature at the inner end of the spiral signifies the renewal of life and global democracy and freedom.





Community Playfields Park

Wilmette, Illinois

Client

Wilmette Park District

Service Provided

program development
alternative concepts
public participation
meetings
master plan
cost estimates
implementation planning
design & construction
documents

Design Elements

pathways
athletic fields
automated irrigation
system
bicycle path system
parking
site furniture
playgrounds
amphitheater
shelter and restroom
building
site utilities
landscape development

Construction Budget

\$1.8 million



Community Playfields Park is an existing 40-acre community park that provides a wide range of recreational facilities to Wilmette residents and serves as a joint facility for a Middle School. One of the District's community center buildings (formerly an elementary school) is also located within the park.

LDC developed a Master Plan for the Park to provide for the renovation of existing facilities and the development of new facilities. Athletic fields, including softball, baseball and soccer fields, were redesigned to improve orientation, drainage, safety, and efficiency. Additional features include a concession stand, restroom, storage building, new playgrounds with a water play facility, and paths that connect the facilities. An amphitheater was also added for outdoor educational activities, concerts and plays.

Community Playfields Park Wilmette, Illinois

Client

Wilmette Park District

Service Provided

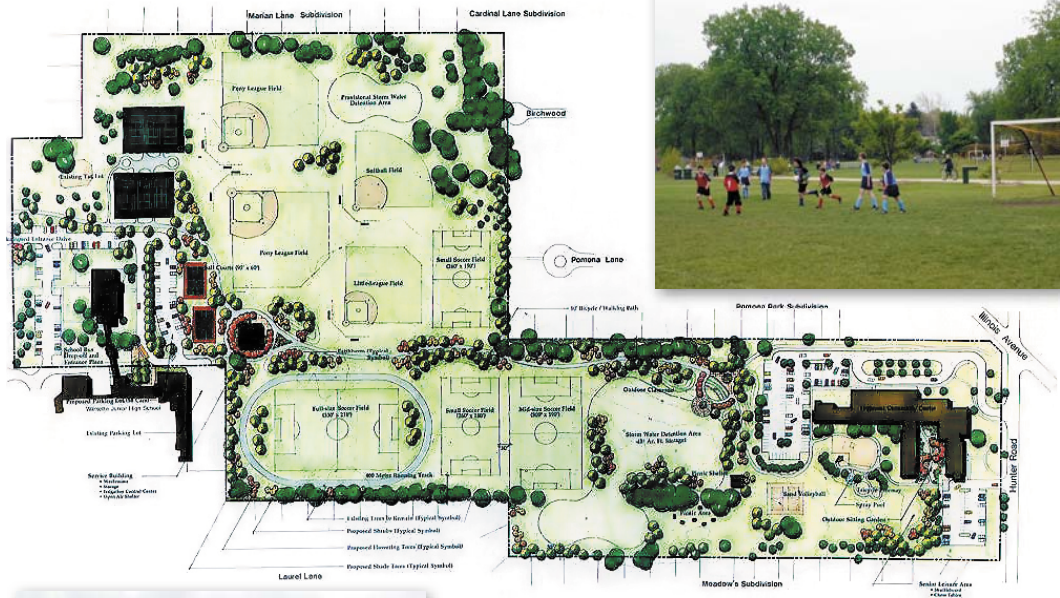
program development
alternative concepts
public participation
meetings
master plan
cost estimates
implementation planning
design & construction
documents

Design Elements

pathways
athletic fields
automated irrigation
system
bicycle path system
parking
site furniture
playgrounds
amphitheater
shelter and restroom
building
site utilities
landscape development

Construction Budget

\$1.8 million



Community Playfields Park is an existing 40-acre community park that provides a wide range of recreational facilities to Wilmette residents and serves as a joint facility for a Middle School. One of the District's community center buildings (formerly an elementary school) is also located within the park.

LDC developed a Master Plan for the Park to provide for the renovation of existing facilities and the development of new facilities. Athletic fields, including softball, baseball and soccer fields, were redesigned to improve orientation, drainage, safety, and efficiency. Additional features include a concession stand, restroom, storage building, new playgrounds with a water play facility, and paths that connect the facilities. An amphitheater was also added for outdoor educational activities, concerts and plays.

Client

Winnetka Park District

Service Provided

program development

alternative concepts

public participation
meetings

cost estimates

master plan

Design Elements

pathways

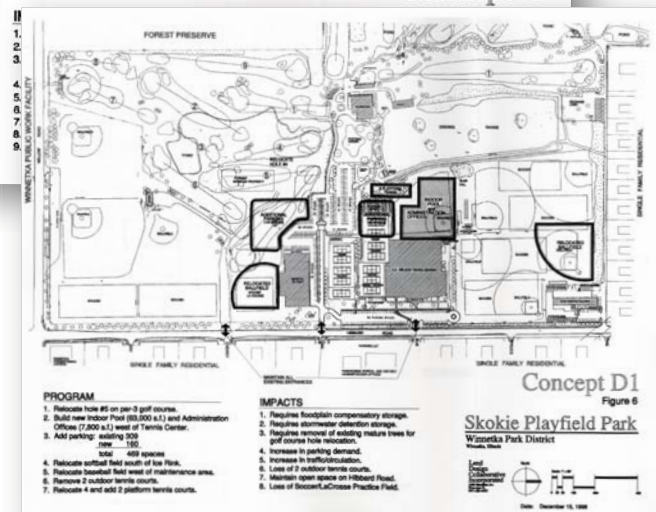
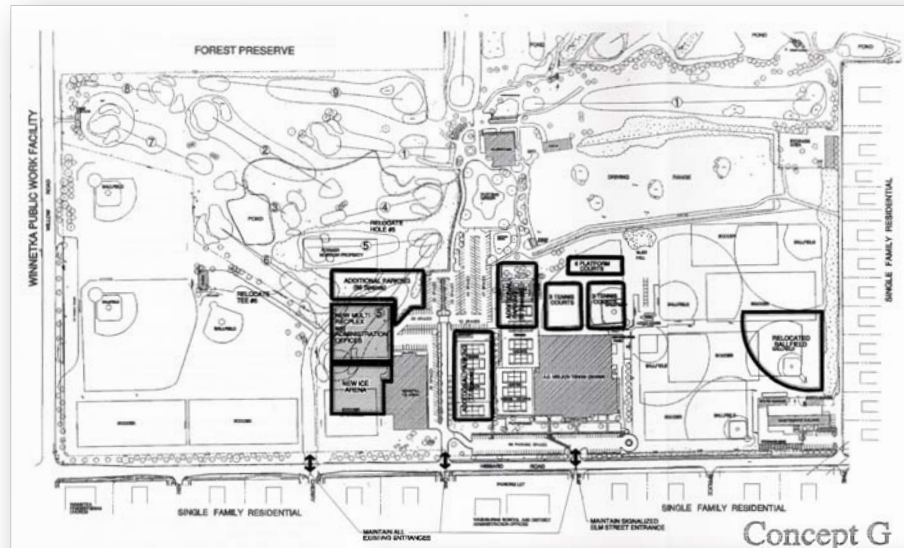
softball and baseball fields

community center building

aquatics center

bicycle path system

roads and parking



Skokie Playfields is an existing 180 acre park with an 18-hole golf course, 9-hole par 3 golf course, driving range, tennis center, athletic fields, platform tennis courts, and an indoor ice rink. Land Design Collaborative (LDC) was hired by Winnetka Park District to evaluate the existing facilities and to assess the potential to add one or more of the following facilities: Rec Plex Center, second ice rink, aquatic center, and an

indoor pool. LDC analyzed the existing site conditions, including the 100-year floodplain, access, traffic, pedestrian circulation, and surrounding land use. LDC developed and evaluated nine alternative concept plans for new facilities and was responsible for conducting public input meetings. A report was prepared documenting the process and final recommendations.

