

DESIGN GUIDELINES

Central Park Design Guidelines



C O N T E N T S

COVER

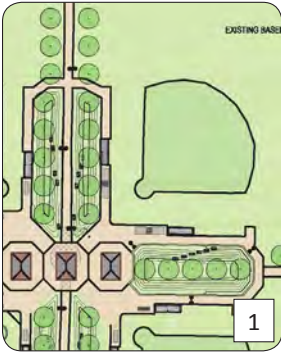
Sketch prepared by RATIO Architects, design by Land Design Collaborative, Inc. and Robinson Engineers LTD.

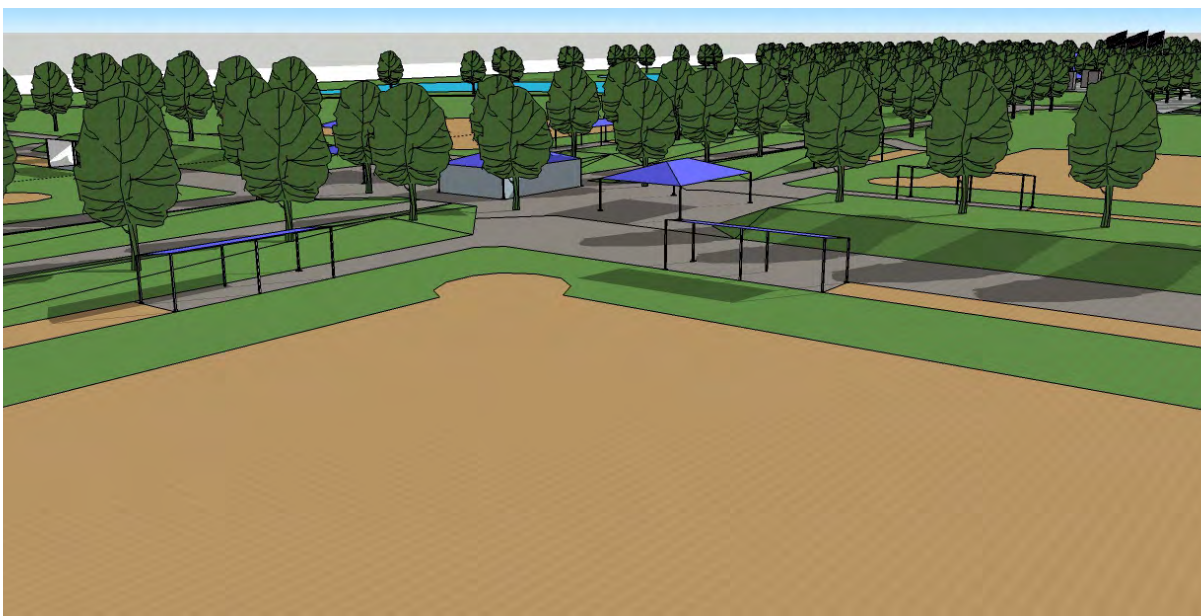
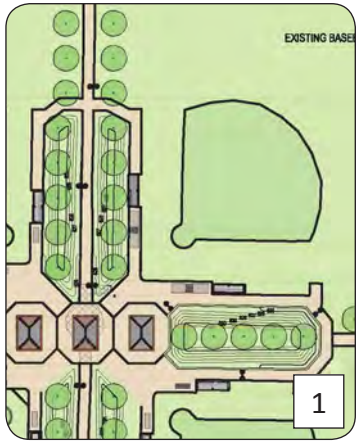
PURPOSE

These Design Guidelines provide detailed information about the Central Park Master Plan to assist future implementation projects by including key dimensions, product sources, and images for specific areas. This information is simply a starting point for future designers to use as a platform to develop implementation plans.

EXHIBITS

- 1. Baseball Field “Hub” area with Structures
- 2. Enlarged Baseball “Hub” Plan
- 3. Wetlands & Native Buffer @ Soccer Fields
- 4. Play Area with Tot Lot; Splash Pad; Mini Golf
- 5. Amphitheater
- 6. Enlarged Amphitheater Plan
- 7. Veterans Memorial
- 8. Enlarged Veterans Memorial Plan
- 9. Core Area
- 10. Enlarged Core Area Plan
- 11. Recreation Center Illustrative Building
- 12. Site Furniture
- 13. Plants – Perennials
- 14. Plants – Shrubs
- 15. Plants – Trees
- 16. Master Plan Segments

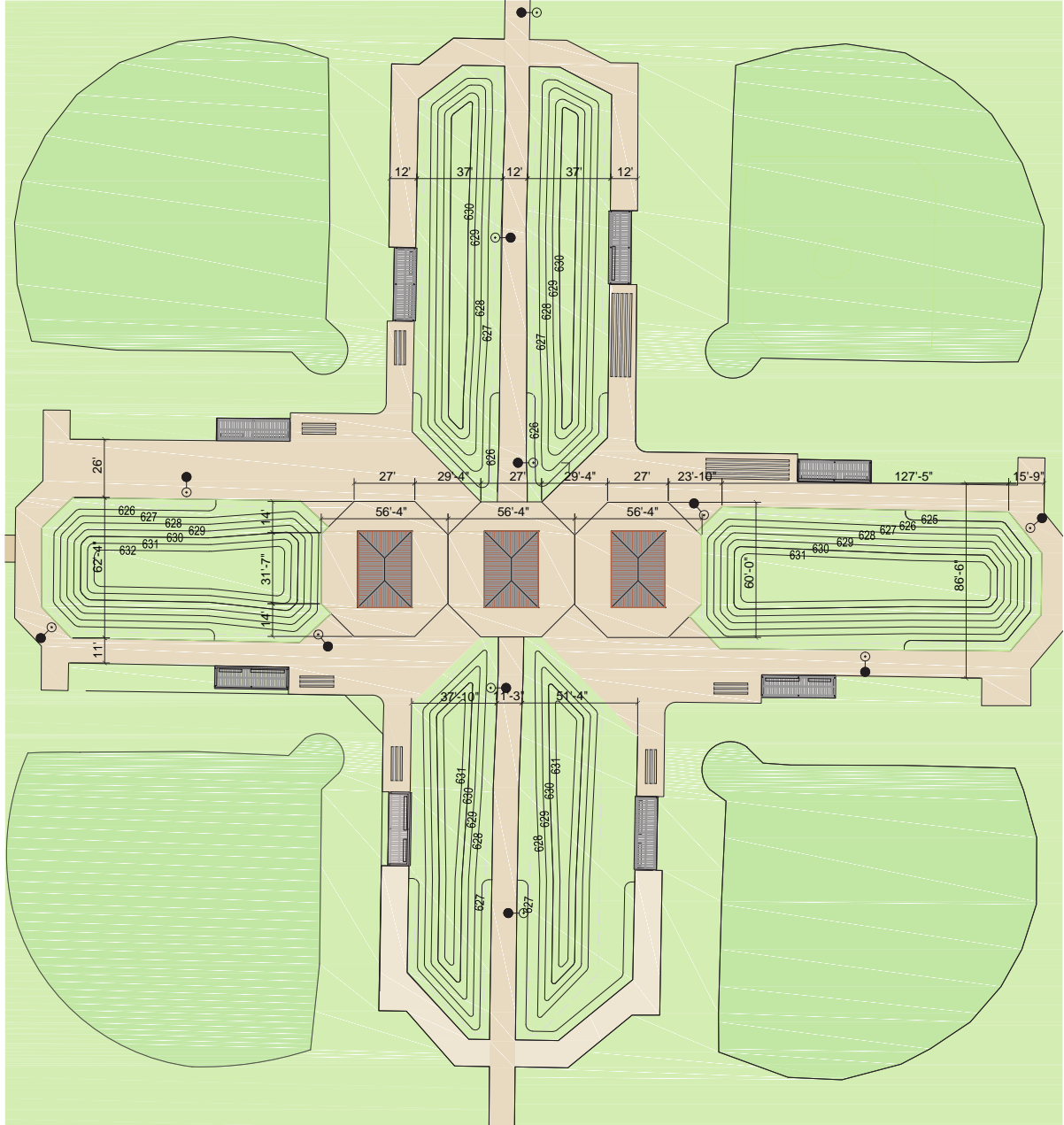




- 1. HUB CORE AREA**
- Berms with trees between fields
 - Seating at base of berms and on slopes
 - Open canopy buildings
 - Dugout under construction
 - Concession Building with Rest Rooms
 - Ped/Bike paved paths
 - Benches, drinking fountains and trash receptacles
 - Pedestrian lights

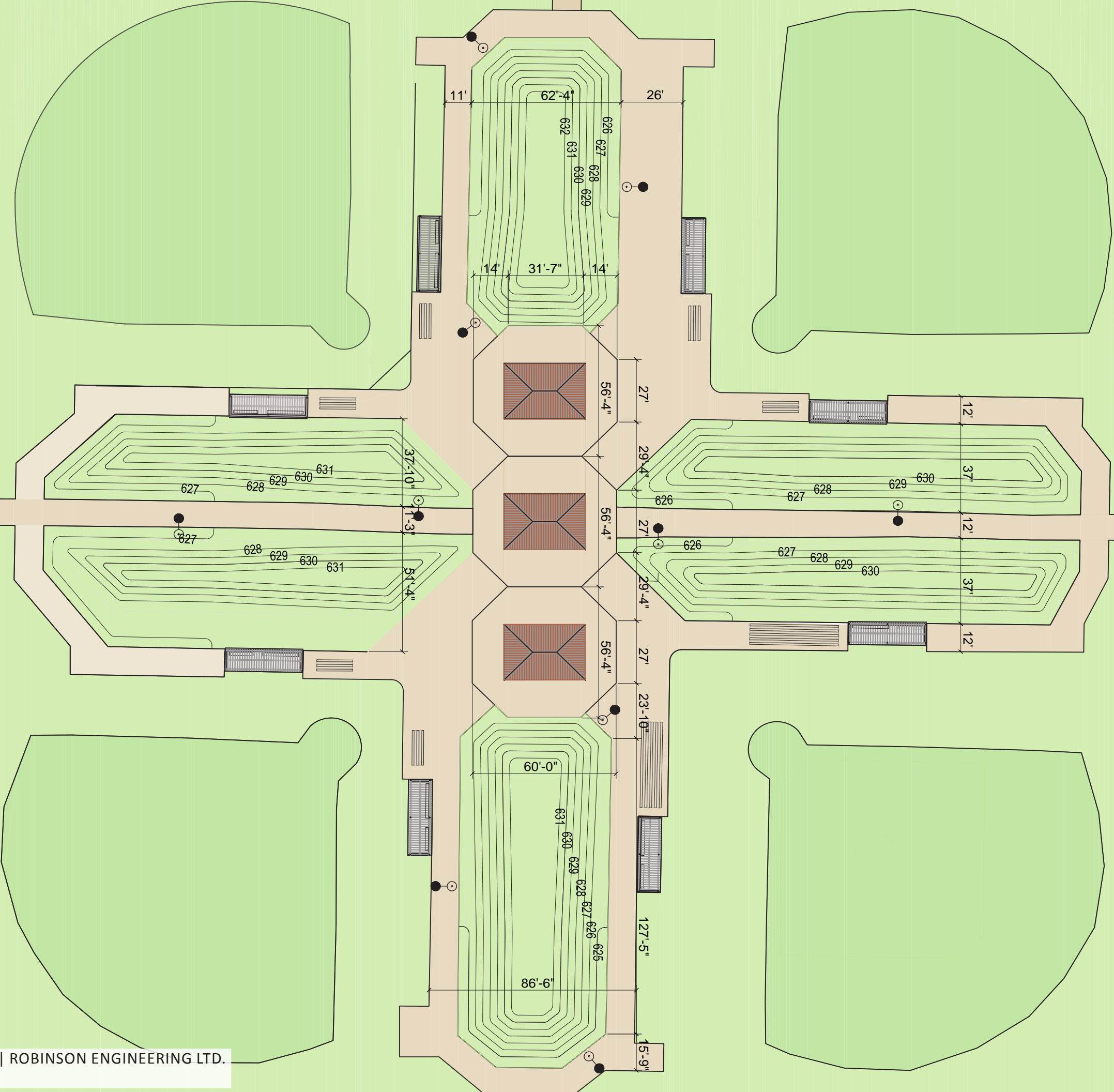
CREDIT: Shelter shown from Polygon by Porter Corp. Holland, MI

NOTE: Key Dimensions Shown on Plan View



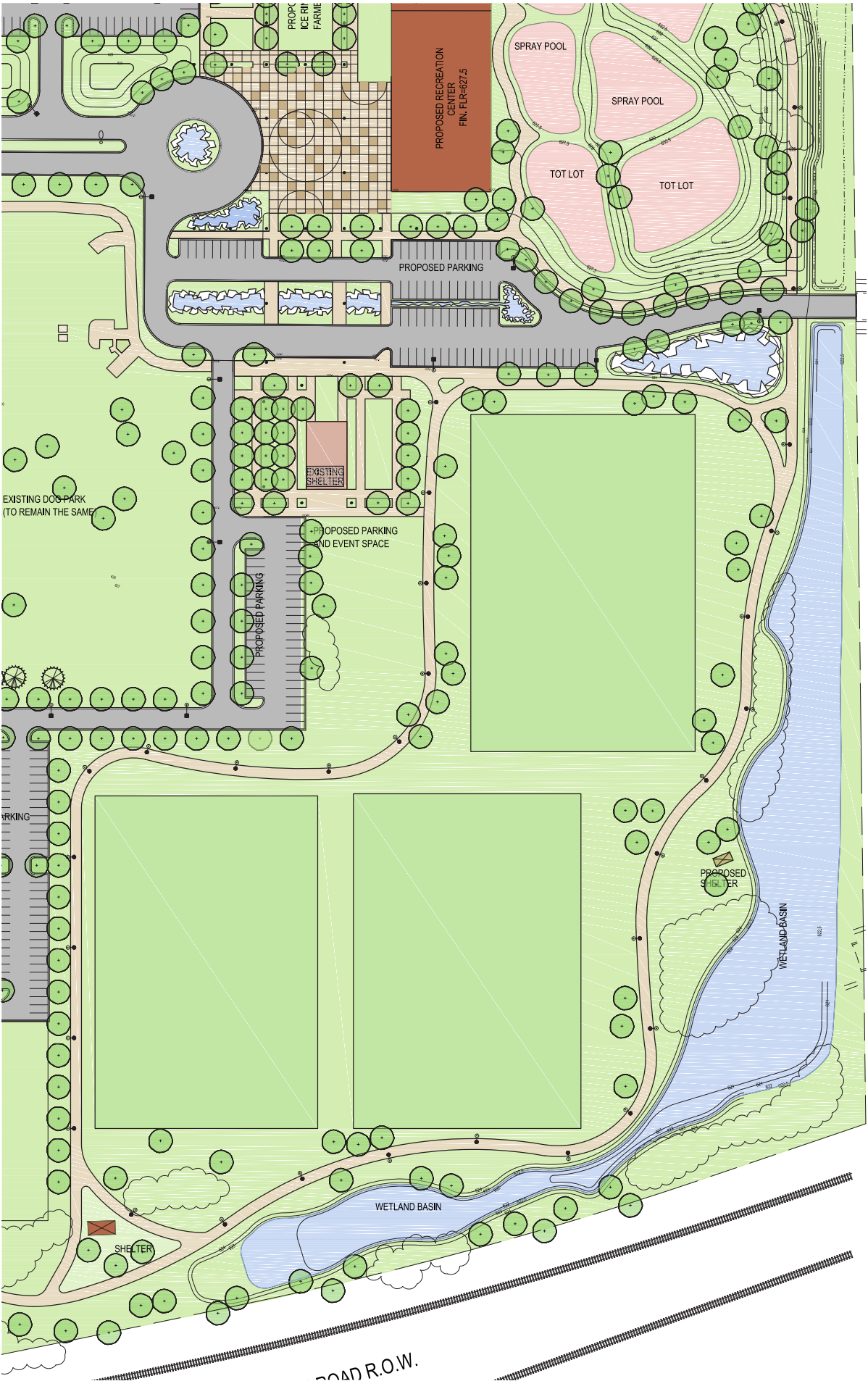
BASEBALL FIELD

EXISTING



D BASEBALL FIELD

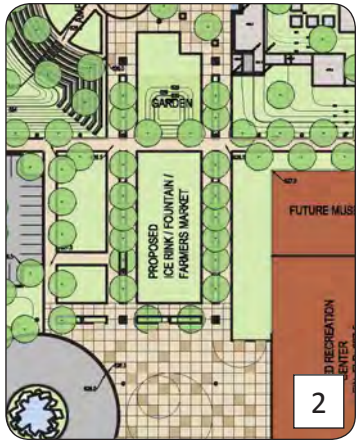
EXISTING



- 1. NATURAL BORDER AREA**
 - Native Planting
 - Habitat
 - Detention areas
 - Buffer and screen
- 2. PERIMETER PATH**
 - Ped bike paved
 - Connecting granular paths
 - Natural rustic buildings
 - Natural play pieces scattered
- 3. SOCCER FIELDS**
 - Turf
 - Irrigated
 - Continuous grade
- 4. BUILDINGS**
 - Shade and Education
 - Rest Room

NOTE: Key Dimensions Shown on Plan View

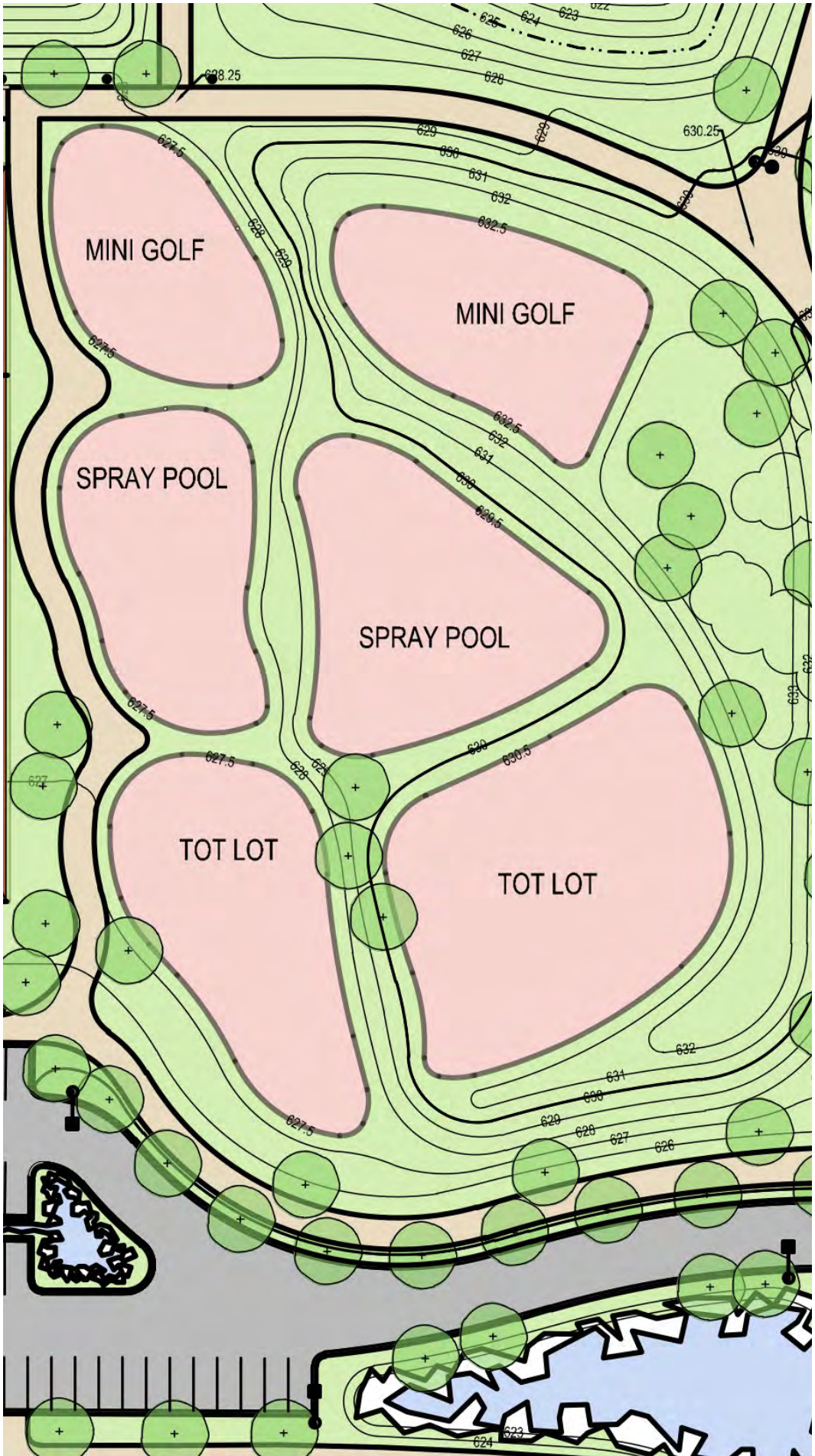


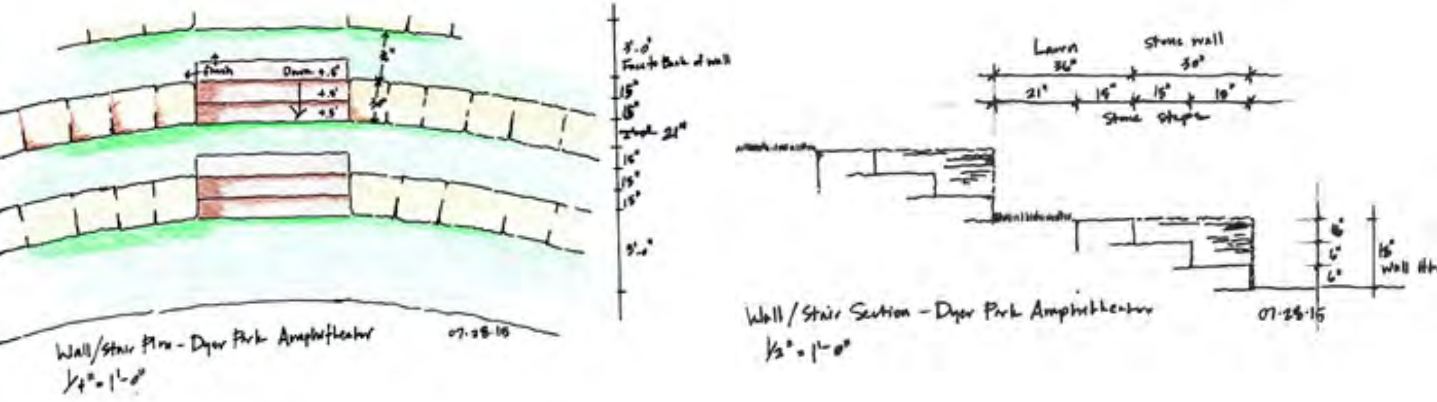
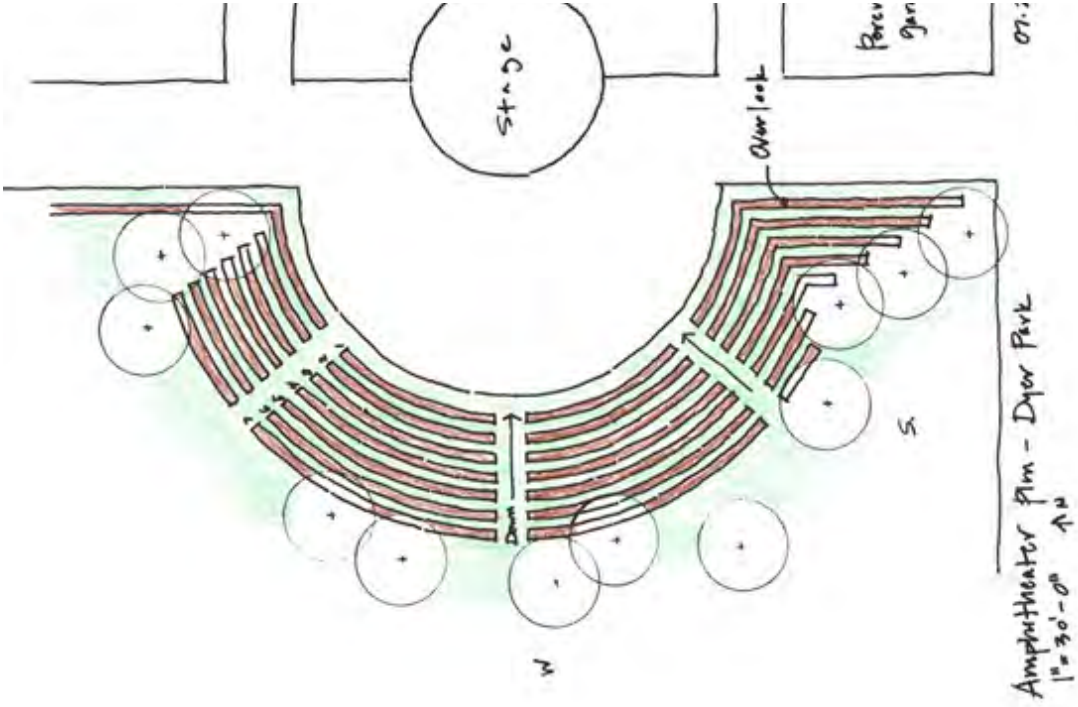


- 1. TOT LOT**
 - Summit Park Blue Ash, Ohio
 - Topography integral
 - Open character and creative
 - Resilient surface
- 2. SPLASH PAD**
 - Recirculation system
 - Inclusive design for all ages and abilities
- 3. MINI GOLF**
 - Inclusive design for all ages and abilities
 - Modular design

CREDIT:
- Play Equipment by Landscape Structures Inc., Delano, MN
- Splash Pad by Aquatic Recreation Company, a part of Landscape Structures Inc.

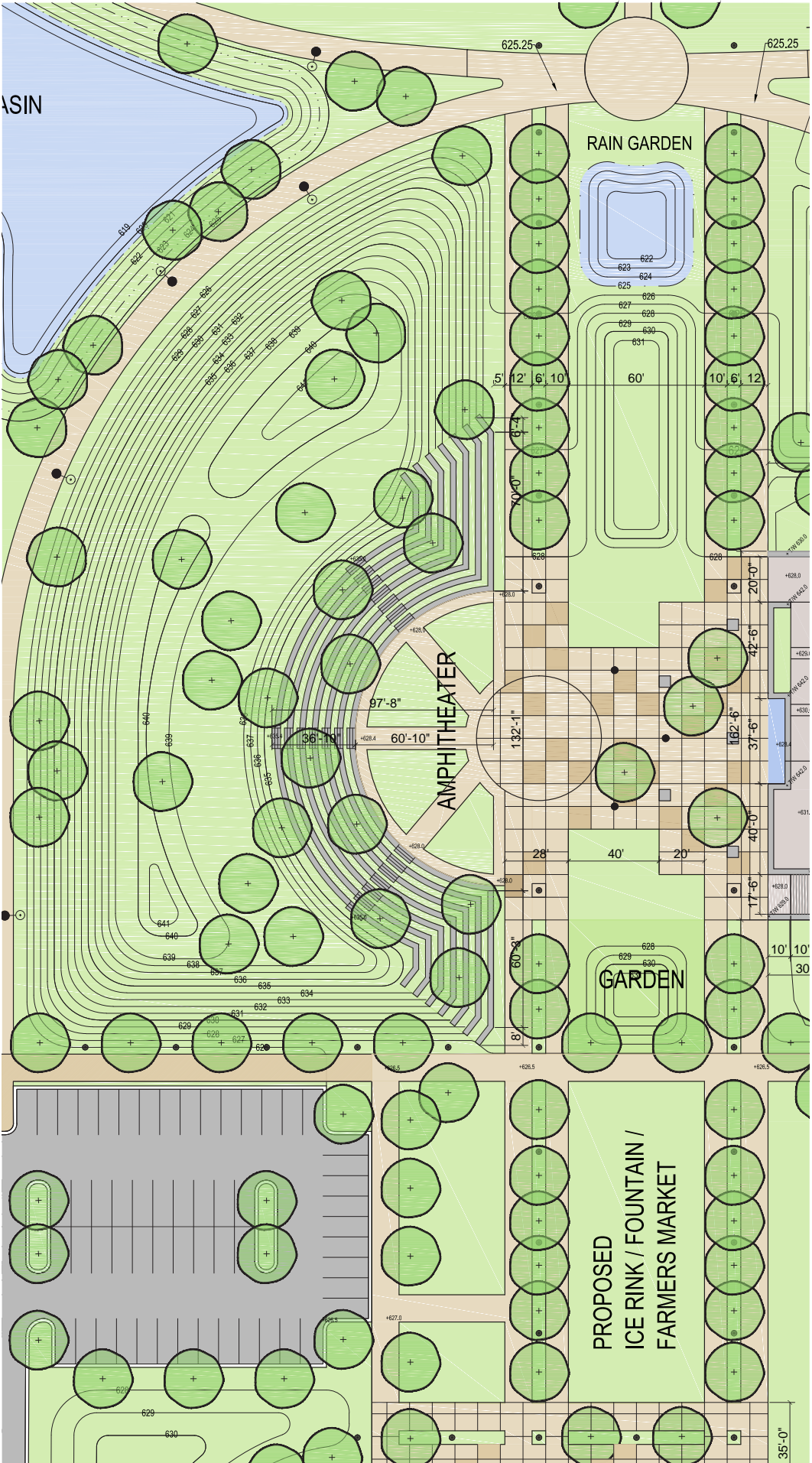
NOTE: Key Dimensions Shown on Plan View





- 1. AMPHITHEATER**
 - Indiana limestone steps and seats
 - Grass terraces with shade trees
 - Terrace seating 600 to 700
 - Lawn seating
 - Accessible seating at grade
- 2. PERFORMANCE SUPPORT SYSTEMS**
 - Permanent and/or portable power
 - Step bollard lights
 - Small groups and big audience activities
 - Joint-use stage with Veterans Memorial

NOTE: Key Dimensions Shown on Plan View



Amphitheater

Dyer Central Park

WETLAND BASIN

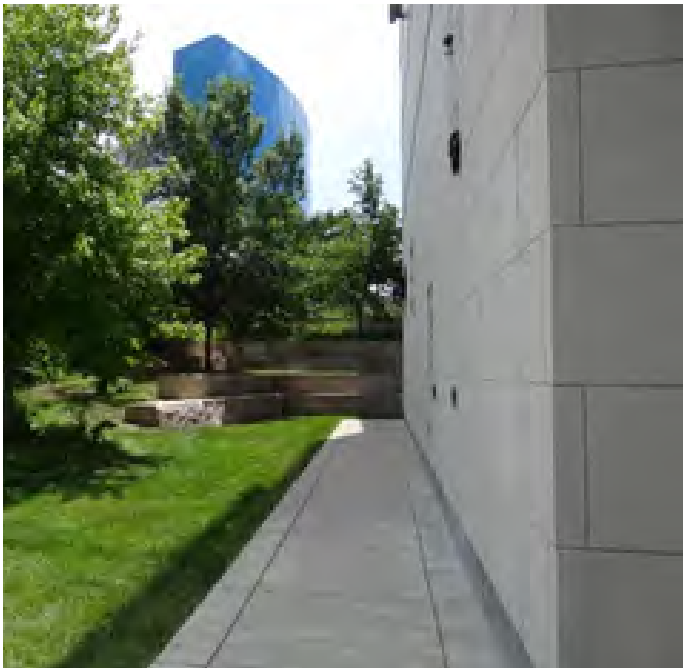
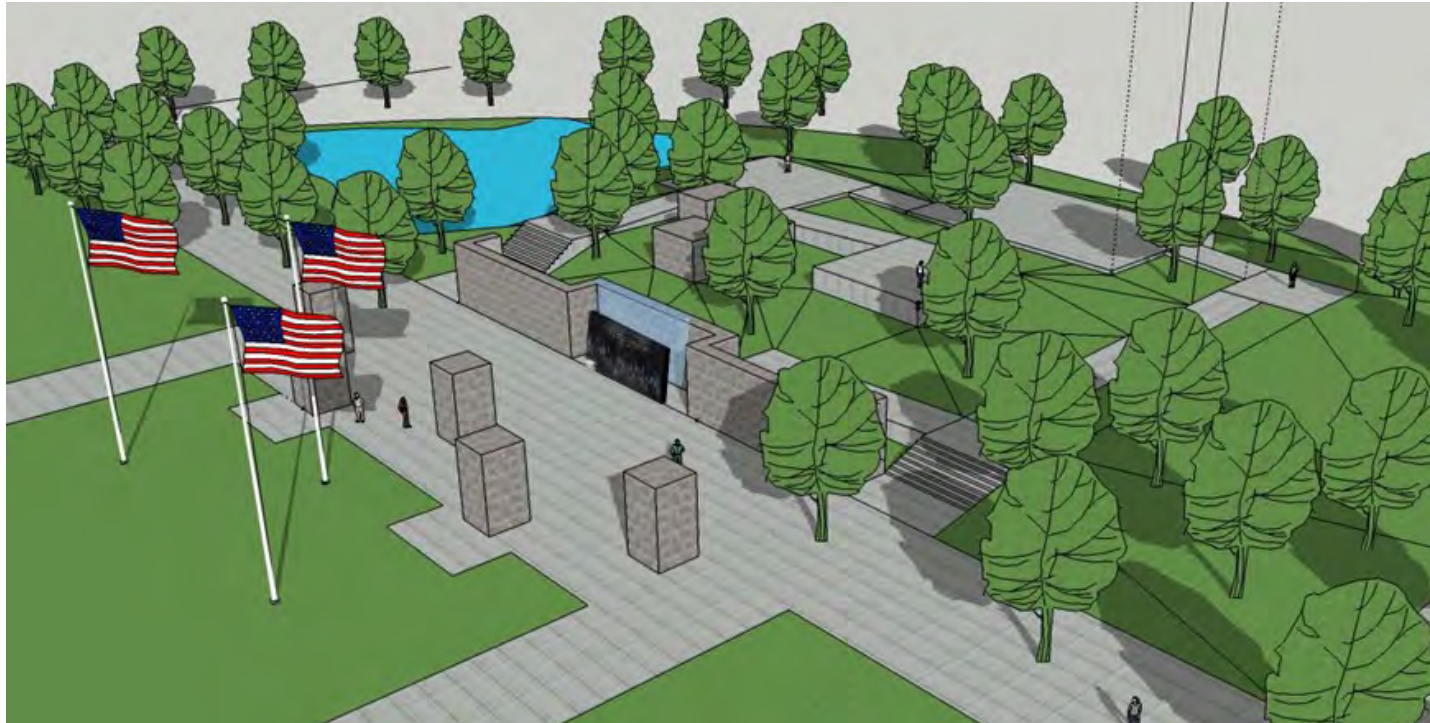
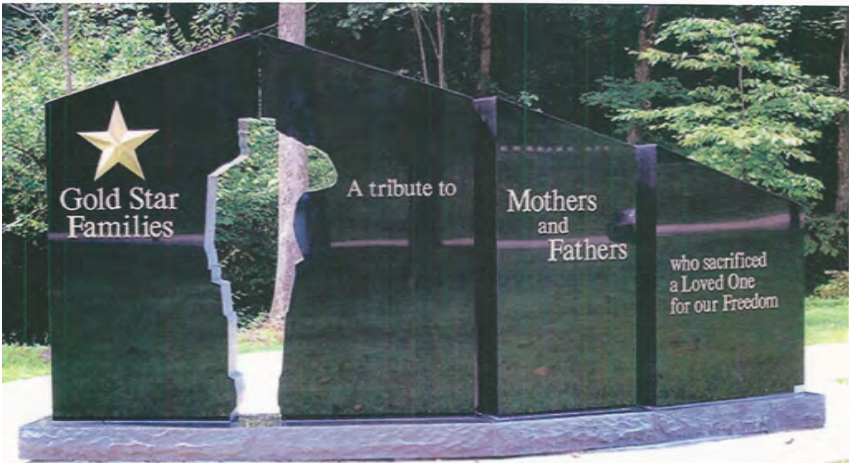
RAIN GARDEN

AMPHITHEATER

GARDEN

PROPOSED
ICE RINK / FOUNTAIN /
FARMERS MARKET

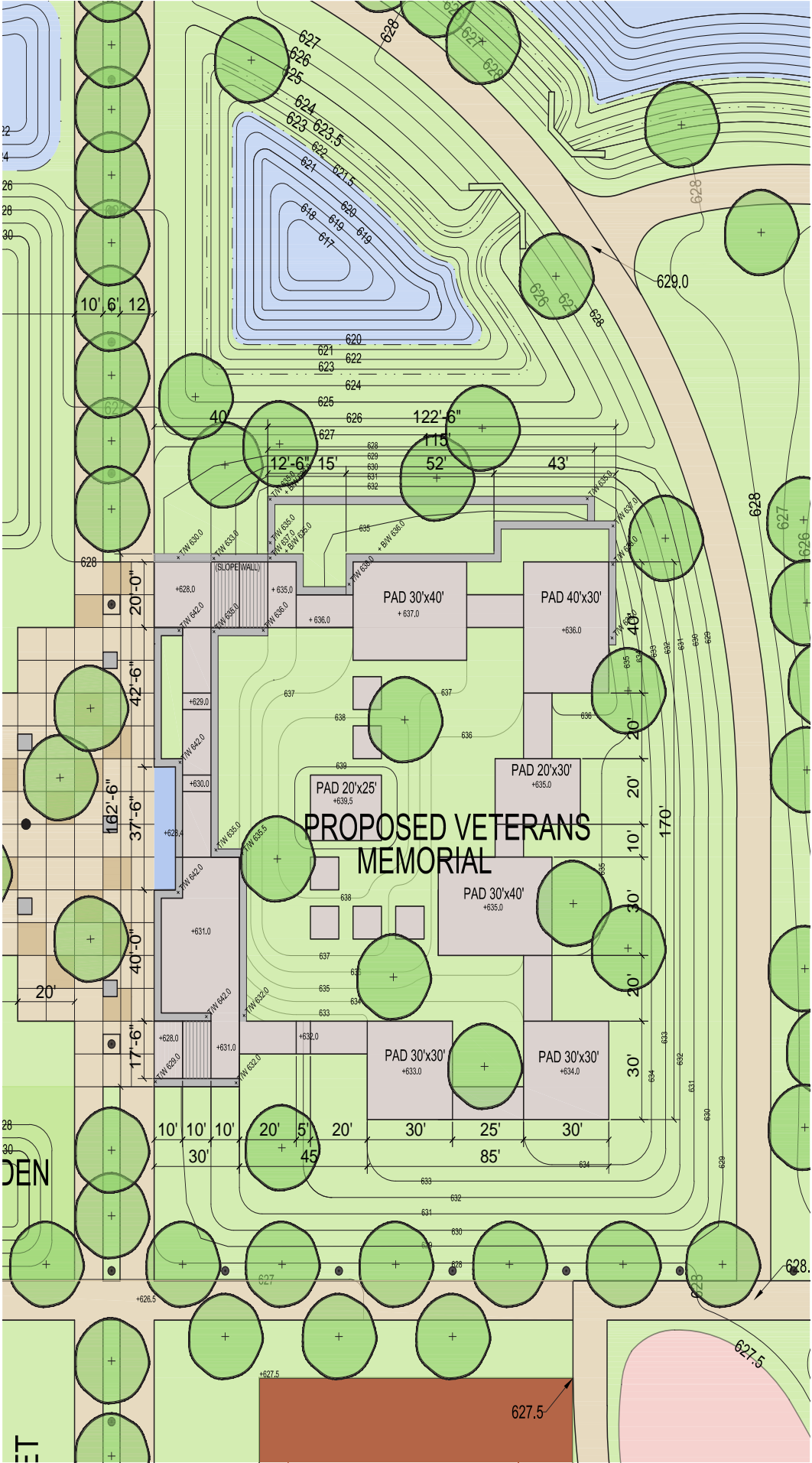
LAND DESIGN COLLABORATIVE, INC. | ROBINSON ENGINEERING LTD.
JAN. 27, 2016



- 1. MEMORIAL**
 - Limestone Memorial Wall 14 feet tall
 - Free standing monument on plaza
 - Contemplative features on back face of wall
 - Limestone column monuments 14 feet tall
 - Water wall
 - Plaza links to amphitheater for special events
- 2. REFLECTIVE "QUIET" SPACE**
 - Landscape natural plantings
 - Bollard lights
 - Accessible throughout
 - Small group and individual activities
 - Over looks from berm to ponds and passive park areas
 - Activity pads connected with walks and stepped platforms
 - Central sculptural limestone water element

CREDIT:
- Limestone Walls at Indiana Natural History Museum, Indianapolis. Design by RATIO Architects.
- Limestone blocks supplied by Evans Limestone Company, Bedford, IN
- Free standing Black Granite Memorial provided by Town of Dyer

NOTE: Key Dimensions Shown on Plan View





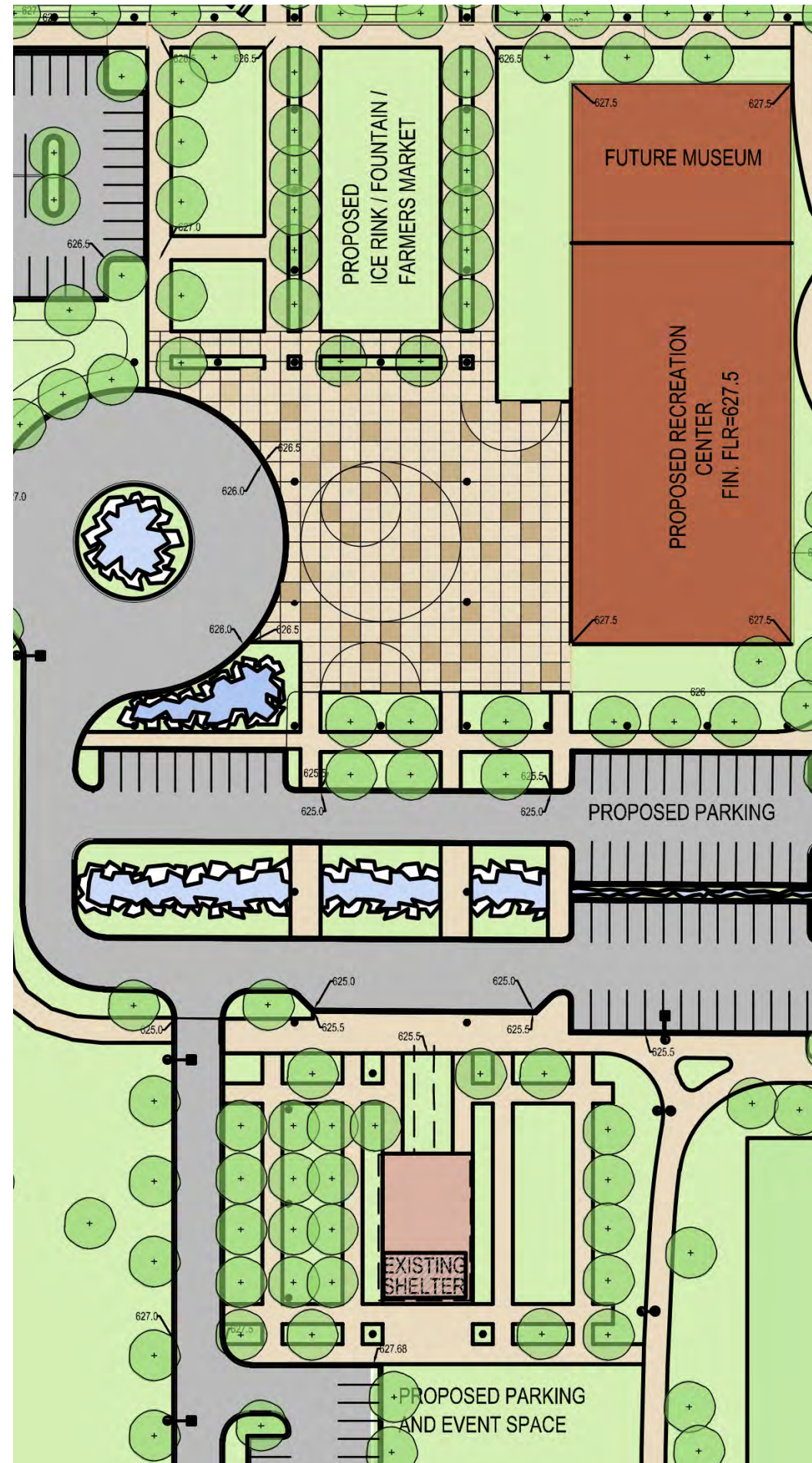
PROPOSED
RINK / FOUNTAIN /
FARMERS MARKET

FUTURE MUSEUM

MINI GOLF

PROPOSED VETERANS
MEMORIAL

RAIN GARDEN

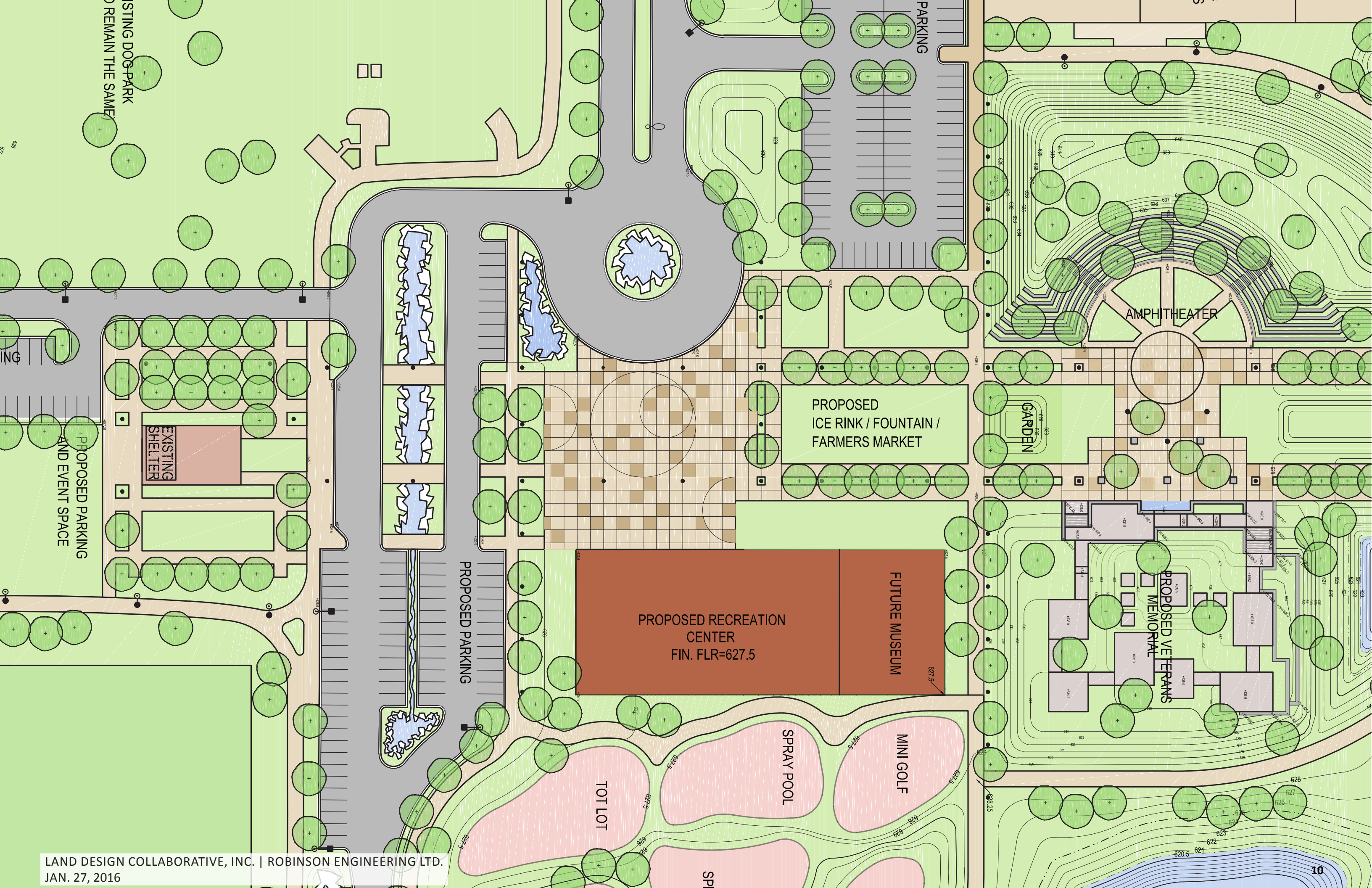


- 1. CORE PLAZA AREA**
 - Mixed features, lights, benches, etc., to create urban feel
 - Seasonal fountain and ice rink
 - Provide plaza for festival events, farmer's market, etc.
 - Plaza paving unit pavers/concrete on 10x10 foot grid
 - Boulevard style walk connecting plaza & baseball hub
 - Recreation Center Building frontage on plaza
- 2. LANDSCAPE**
 - Ped bike areas
 - Add plaza plant beds and trees in future
 - Natural rustic storm water bio swales
 - Create tree bosque at existing shelter
- 3. EXISTING SHELTER BUILDING**
 - Increase use for concessions
 - Rest Room addition, access from rear
 - Provide picnic and Bocce Ball
 - Provide visual and ped connection to plaza

CREDIT: Top Photo Georgia ST., Indianapolis, IN. Design by RATIO Architects

NOTE: Key Dimensions Shown on Plan View







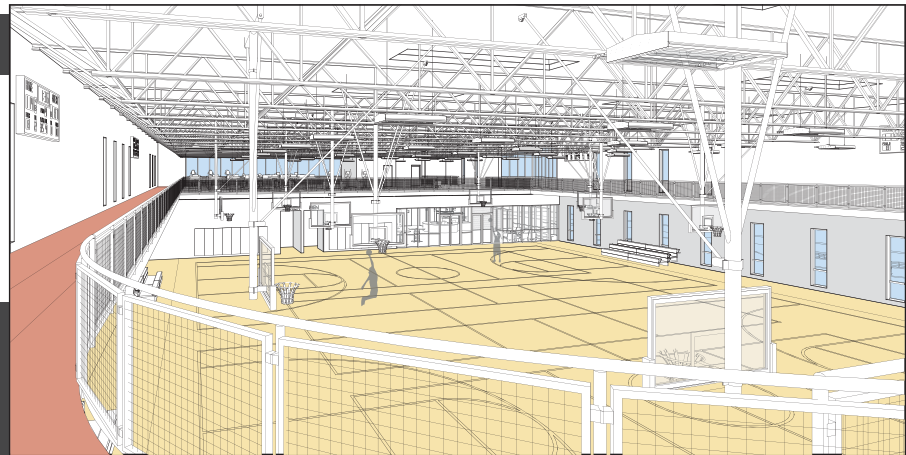
EXTERIOR VIEW

OUR PROPOSAL FOR A 35,000 SQUARE FOOT RECREATION CENTER FOCUSES ON FITNESS AND ATHLETICS. THE \$6.35 MILLION PRICE TAG INCLUDES THE FOLLOWING:

- BUILDING CONSTRUCTION
- SITEWORK
- FURNISHINGS
- FEES
- SOFT COSTS

PHNArchitects HAS SEEN A TREND TOWARDS BUILDING RECREATION CENTERS THAT PROVIDE THE BASICS IN RECREATION - A LARGE, FLEXIBLE GYM, A FITNESS CENTER, BASIC CHANGING ROOMS, AND A MULTI-PURPOSE SPACE.

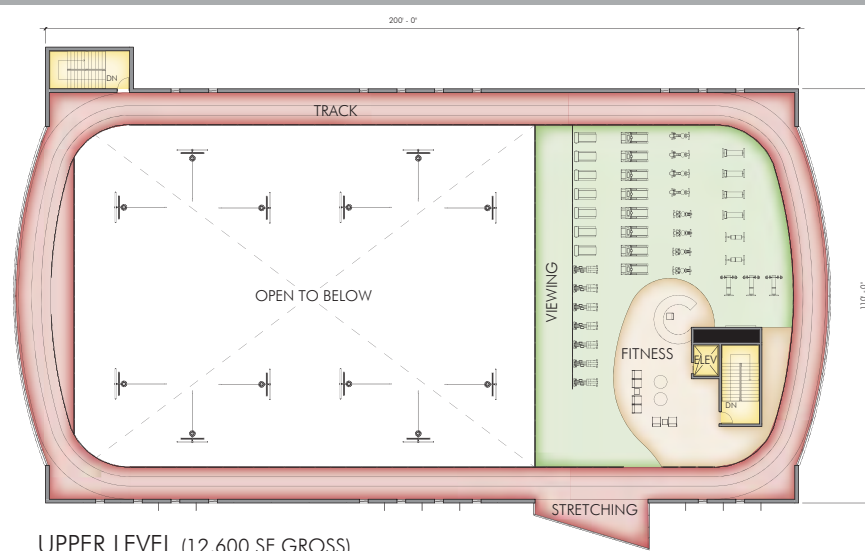
WE LOOK FORWARD TO DISCUSSING YOUR FUTURE PROJECT!



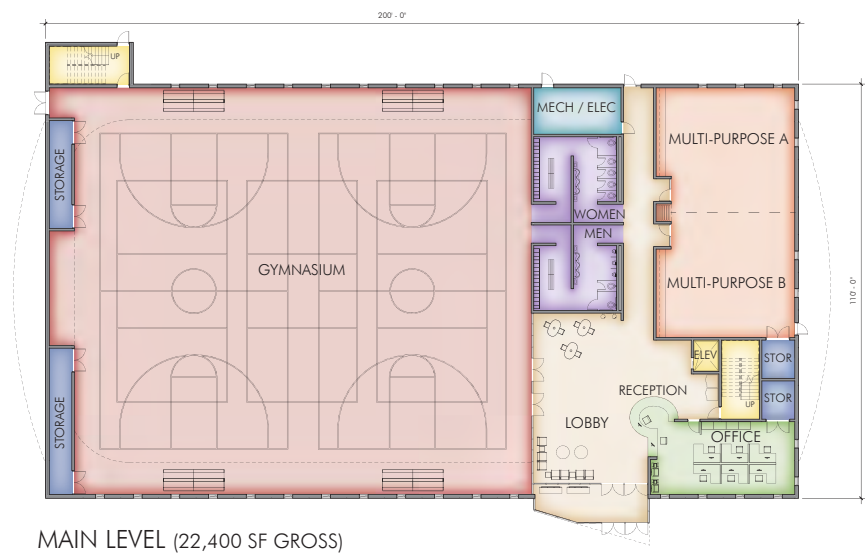
INTERIOR VIEWS



END ELEVATION



UPPER LEVEL (12,600 SF GROSS)



MAIN LEVEL (22,400 SF GROSS)

FLOOR PLANS

COMMENTS

- 1. RECREATION CENTER BUILDING**
 - Illustrative Recreation Center Building
 - Dominate frontage architecture
 - Multipurpose use
 - Food concessions
 - Outdoor terraces
- 2. SPECIAL LIGHTING ON FACADE**
 - Visibility from Calumet Street
 - Entry drive drop-off loop
 - Strong connections to play area behind
 - Strong pedestrian connection to existing shelter

NOTE: Key Dimensions Shown on Plan View



RECREATION CENTER - \$6.35 MILLION COMPLETE

2280 White Oak Circle, Suite 100-B, Aurora, IL 60502
T 630.665.8400
F 630.665.8450
www.phnarchitects.com
©2014

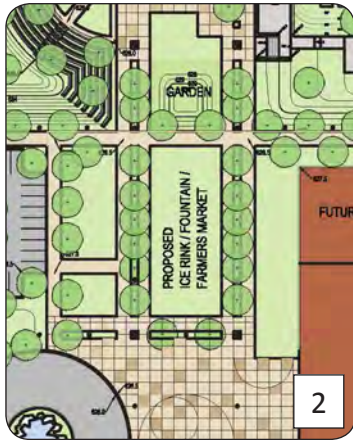
PHNArchitects

PARK LOCATIONS

RECOMMENDED

ALTERNATIVE BENCH | TRASH | LIGHT | BOLLARD

COMMENTS



Bench



Trash



- 1. BENCHES**
- Urban character recommended
 - Wood slated benches in active areas
 - Metal, wood, or synthetic benches in less active places
- 2. TRASH RECEPTACLES**
- Ornamental metal in active areas
 - Metal mesh or painted barrels with or without access doors in remote areas
- 3. LIGHTS**
- Match Dyer Town standard
 - Use ornamental pedestrian style light in core activity areas
 - Approximate mounting heights 12 feet core area; 20 feet perimeter pathway; 35 roadway (match existing style)
- 4. BOLLARDS**
- Match style of light pole selected
 - Concrete barrier bollard to separate vehicles and protect pedestrians
- 5. BIKE RACKS**
- Use standard style shown in inconspicuous locations
 - Arrange in rows where large numbers of bikes gather

SITE FURNITURE CREDITS:
- Maglin; Victor Stanley; Timberform; Dumor

LIGHTS AND BOLLARDS CREDITS:
- Kim Lighting; Hadco lighting; Sternberg lighting

NOTE: KEY DIMENSIONS SHOWN ON PLAN VIEW



Light



Bollard



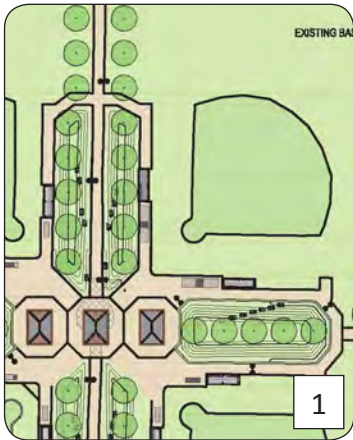
Bollard Light



Bollard Light



Barrier Bollard



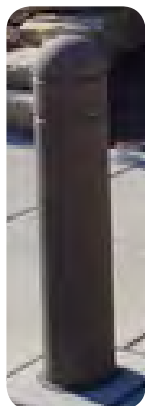
Bench



Trash



Light



Bollard



Bollard Light

Barrier Bollard



Bollard Light



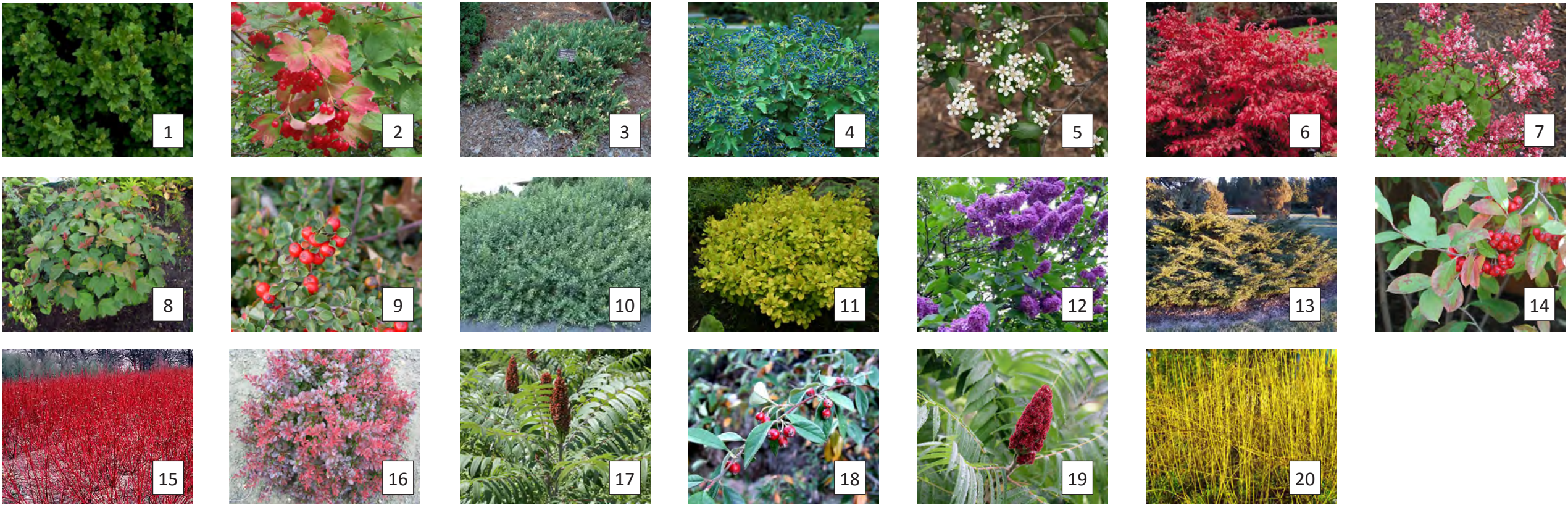
Common Name

- 1. Black Eyed Susan
- 2. Dwarf Fountain Grass
- 3. Dwarf Pavement Rose
- 4. Feather Reed Grass
- 5. Indian Grass
- 6. Prairie Dropseed
- 7. Purple Coneflower
- 8. Russian Sage

Scientific Name

- Rudbeckia hirta*
- Pennisetum alopecuroides 'Hameln'*
- Rosa 'Dwarf Pavement'*
- Calamagrostis x acutiflora 'Karl Foerster'*
- Sorghastrum nutans*
- Sporobolus heterolepis*
- Echinacea purpurea*
- Perovskia atriplicifolia*





Common Name

- 1. Alpine Currant
- 2. American Cranberry Bush
- 3. Andorra Juniper
- 4. Arrowwood Virburnum
- 5. Black Chokeberry
- 6. Burning Bush
- 7. Chinese Lilac
- 8. Compact European Highbush
- 9. Cranberry Cotoneaster
- 10. Fragrant Sumac 'Gro-Low'

Scientific Name

- Ribes alpinum*
- Viburnum trilobum*
- Juniperus horizontalis*
- Viburnum dentatum*
- Aronia malanocarpa*
- Euonymous alatus compactus*
- Syringa chinensis*
- Viburnum opulus compacta*
- Cotoneaster apiculatus*
- Rhus aromatica 'Gro-Low'*

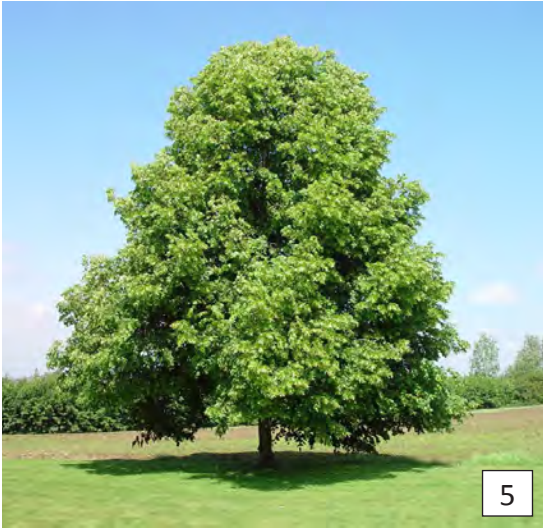
Common Name

- 11. Green Barberry
- 12. Miss Kim Lilac
- 13. Pfitzer Juniper
- 14. Red Chokeberry
- 15. Red Dogwood
- 16. Red Leaf Barberry
- 17. Smooth Sumac
- 18. Spreading Cotoneaster
- 19. Staghorn Sumac
- 20. Yellow Dogwood

Scientific Name

- Berberis thunbergii*
- Syringa patula 'Miss Kim'*
- Juniperus pfitzer*
- Aronia brilliantissima*
- Cornus sericea*
- Berberis thunbergii atropupures*
- Rhus glabra*
- Cotoneaster divaricata*
- Rhus hirta*
- Cornus sericea 'Flaviramea'*





Common Name

1. American Linden

- Soil Suitability: Adapted to deep, fertile, well-drained loam and clay soils
- Drought Tolerance: Low • Growth Habit: Rounding when mature • Hardiness: To -45°F

Scientific Name

Tilia americana

2. Common Hackberry

- Soil Suitability: Adapted to fine, medium, & coarse textured soils • Drought Tolerance: Medium
- Growth Habit: Arching when mature • Hardiness: To -45°F

Celtis occidentalis

3. Ginkgo

- Soil Suitability: Adapted to fine, medium & coarse textured soils • Drought Tolerance: High
- Growth Habit: Sparsely-branched, upright • Hardiness: To -40°F

Ginkgo biloba

4. Honeylocust

- Soil Suitability: Adapted to fine, medium & coarse textured soils • Drought Tolerance: High
- Growth Habit: Symmetrical growth habit • Hardiness: To -40°F

Gleditsia triacanthos

Common Name

5. Little Leaf Linden

- Soil Suitability: Adapted to fine, medium & coarse textured soils
- Drought Tolerance: Medium • Growth Habit: Rounded when mature • Hardiness: To -40°F

Scientific Name

Tilia cordata

6. Red Maple

- Soil Suitability: Adapted to fine, medium & coarse textured soils • Drought Tolerance: High
- Growth Habit: Rounded • Hardiness: To -40°F

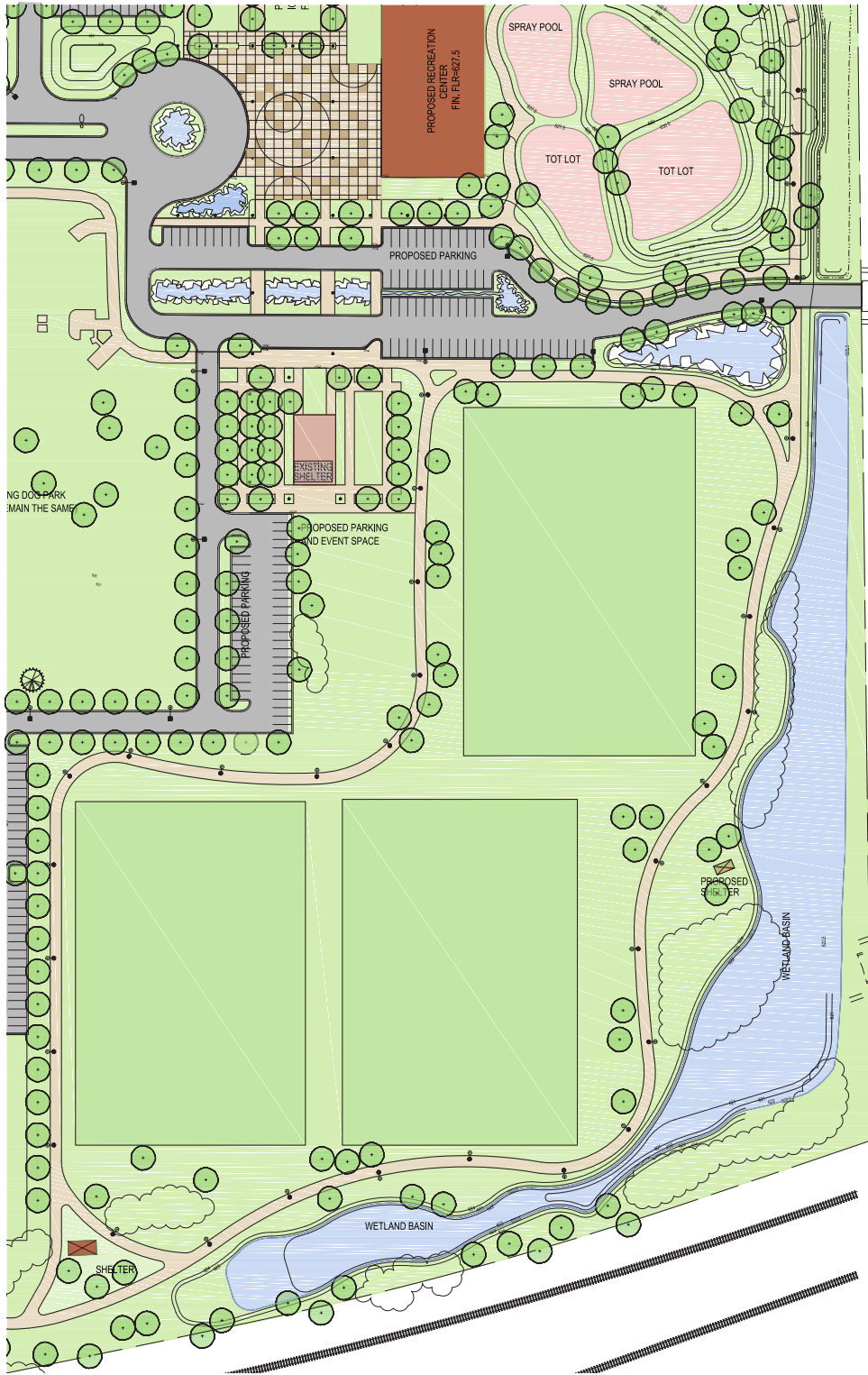
Acer rubrum

7. Redmond Linden

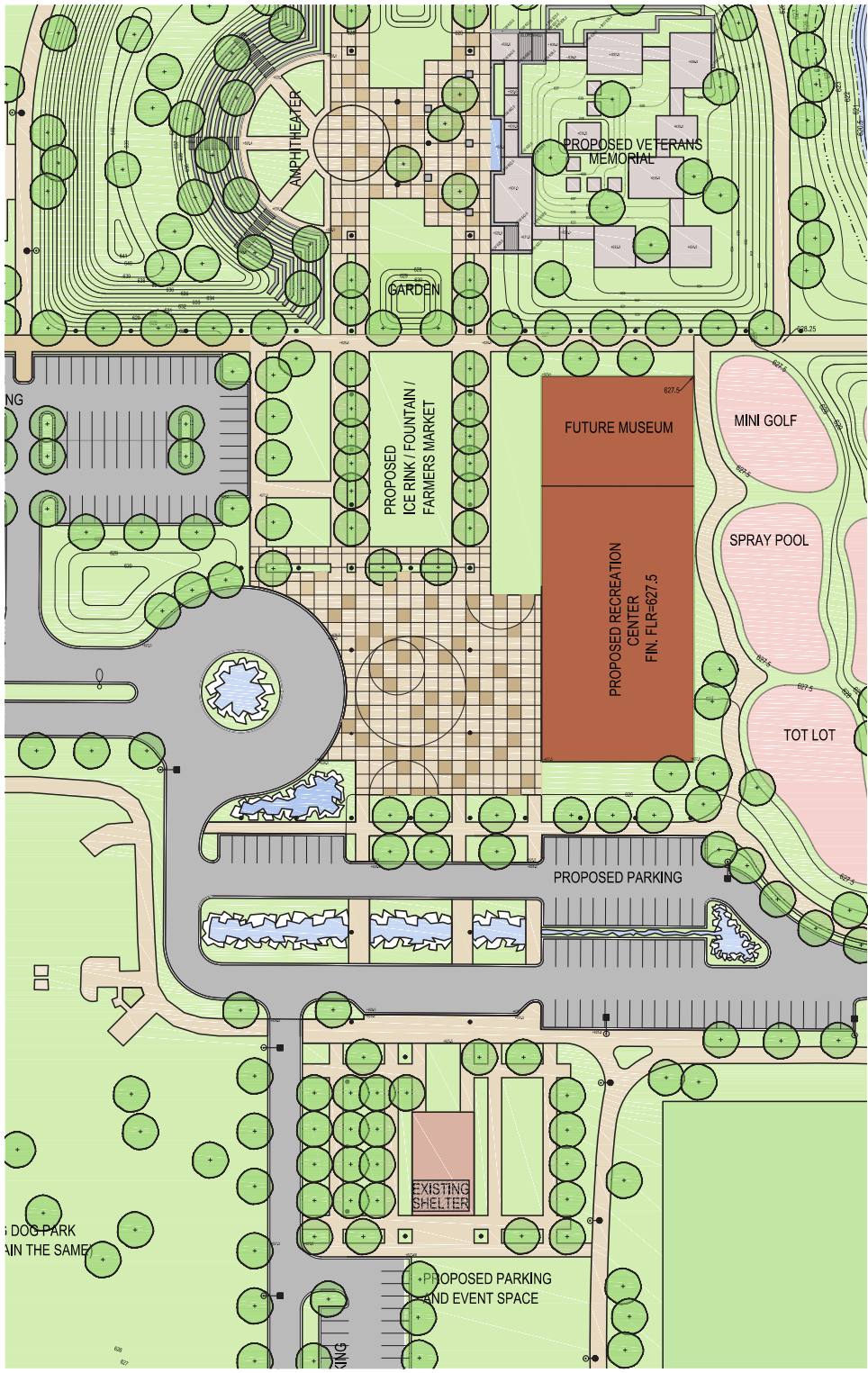
- Soil Suitability: Adapted to fine, medium & coarse textured soils • Drought Tolerance: High
- Growth Habit: Pyramidal • Hardiness: To -30°F

Tilia americana ‘Redmond’

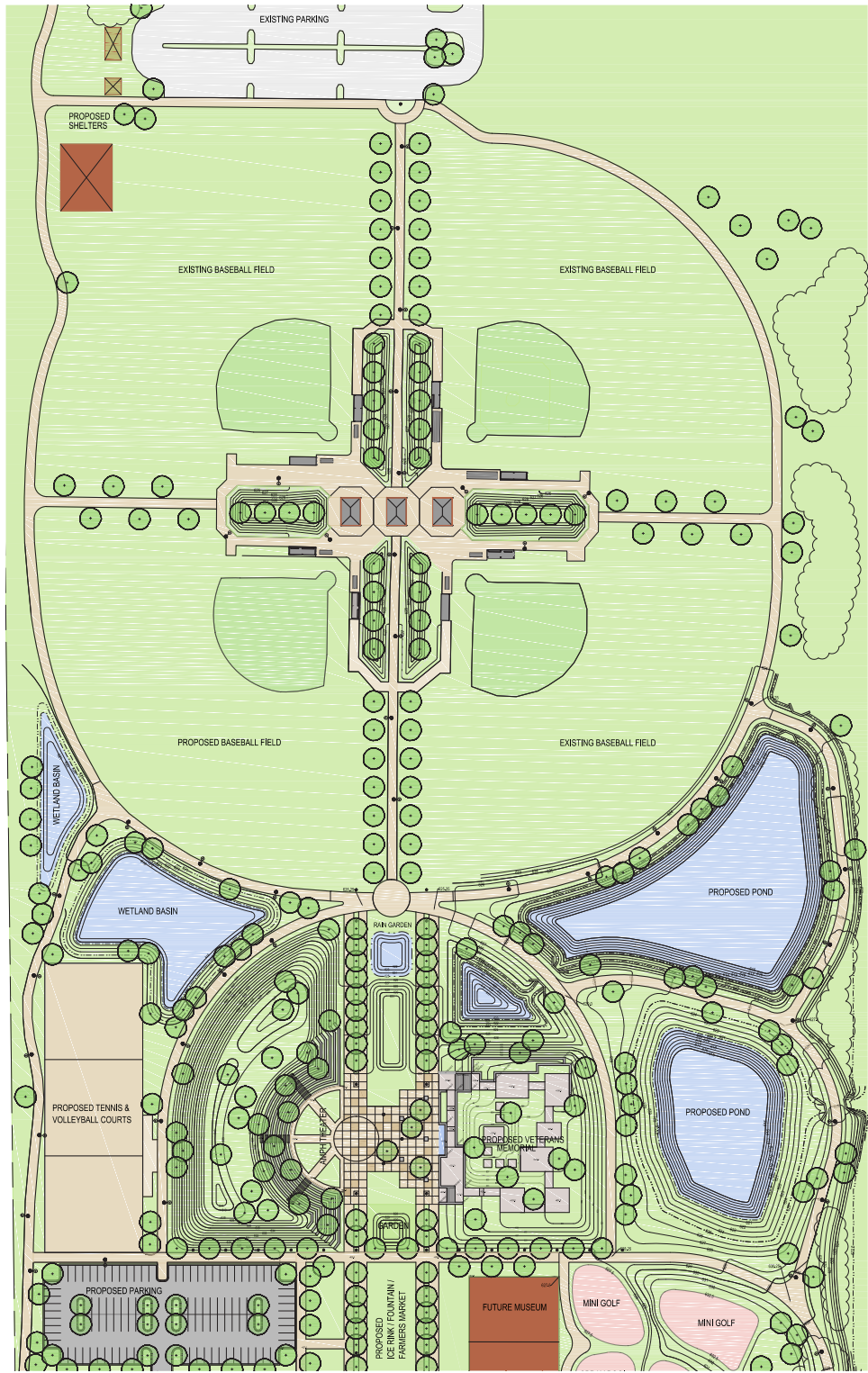




Wetlands & Native Buffer



Core Area



Baseball Field "Hub"

© 1986- 2019 Material Presented in this Booklet is
Property of Land Design Collaborative. All Rights Reserved.